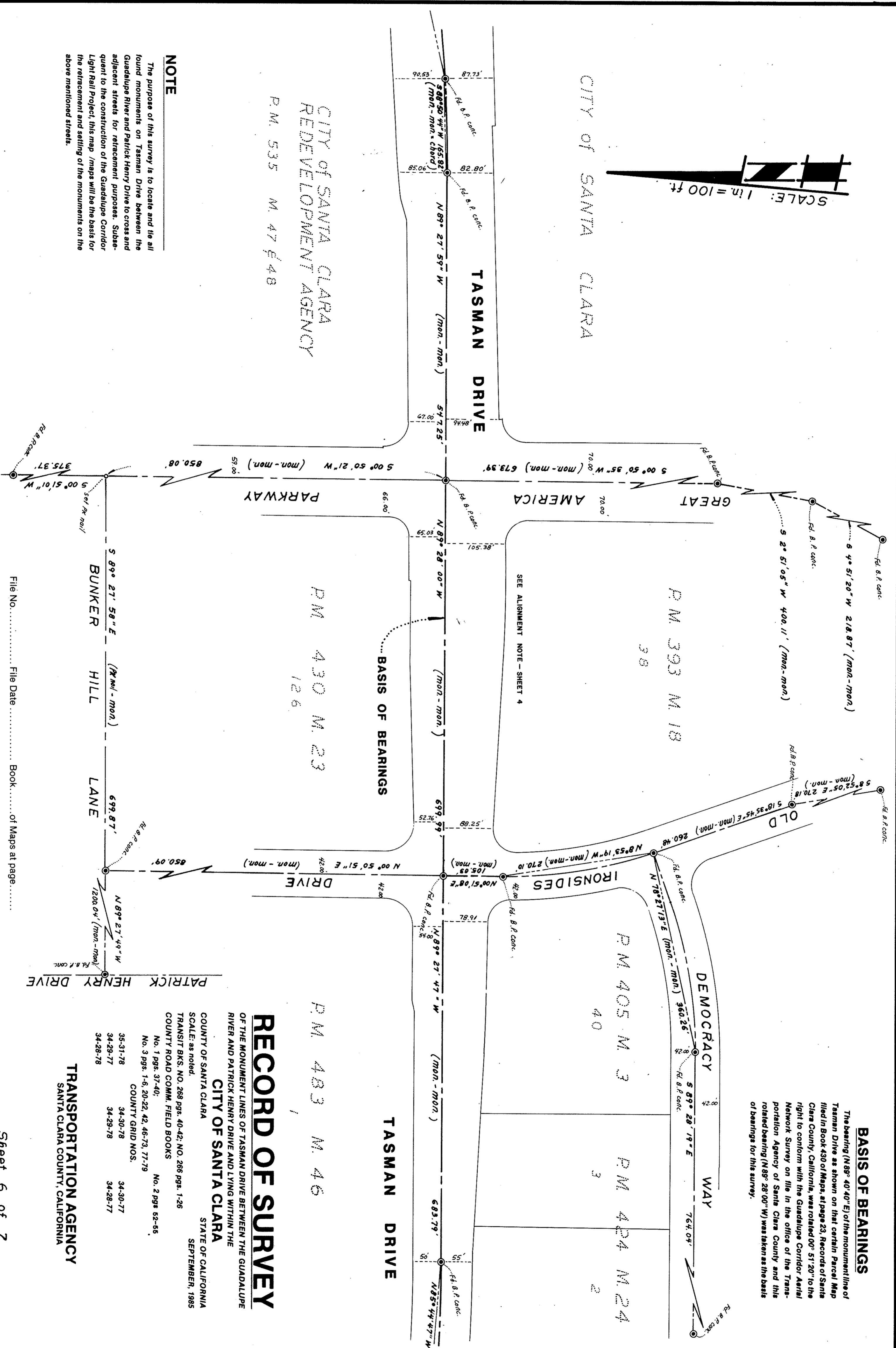


BASIS OF BEARINGS

The bearing (N 89° 40' 40" E) of the monument line of Tasman Drive as shown on that certain Parcel Map filed in Book 430 of Maps, at page 23, Records of Santa Clara County, California, was rotated 00° 51' 20" to the right to conform with the Guadalupe Corridor Aerial Network Survey on file in the office of the Transportation Agency of Santa Clara County and this rotated bearing (N 89° 28' 00" W) was taken as the basis of bearings for this survey.



RECORD OF SURVEY

OF THE MONUMENT LINES OF TASMAN DRIVE BETWEEN THE GUADALUPE RIVER AND PATRICK HENRY DRIVE AND LYING WITHIN THE CITY OF SANTA CLARA

COUNTY OF SANTA CLARA STATE OF CALIFORNIA

SCALE: as noted. TRANSIT BKS. NO. 268 PGS. 40-42; NO. 266 PGS. 1-26

COUNTY ROAD COMM. FIELD BOOKS

No. 1 PGS. 37-40; No. 2 PGS. 62-65

No. 3 PGS. 1-6, 20-22, 42, 46-73, 77-79

COUNTY GRID NOS. 34-30-78 34-30-77

34-29-78 34-29-77

34-28-78 34-28-77

TRANSPORTATION AGENCY
SANTA CLARA COUNTY, CALIFORNIA

NOTE

The purpose of this survey is to locate and tie all found monuments on Tasman Drive between the Guadalupe River and Patrick Henry Drive to cross and adjacent streets for retracement purposes. Subsequent to the construction of the Guadalupe Corridor Light Rail Project, this map /maps will be the basis for the retracement and setting of the monuments on the above mentioned streets.

File No. File Date Book of Maps at page