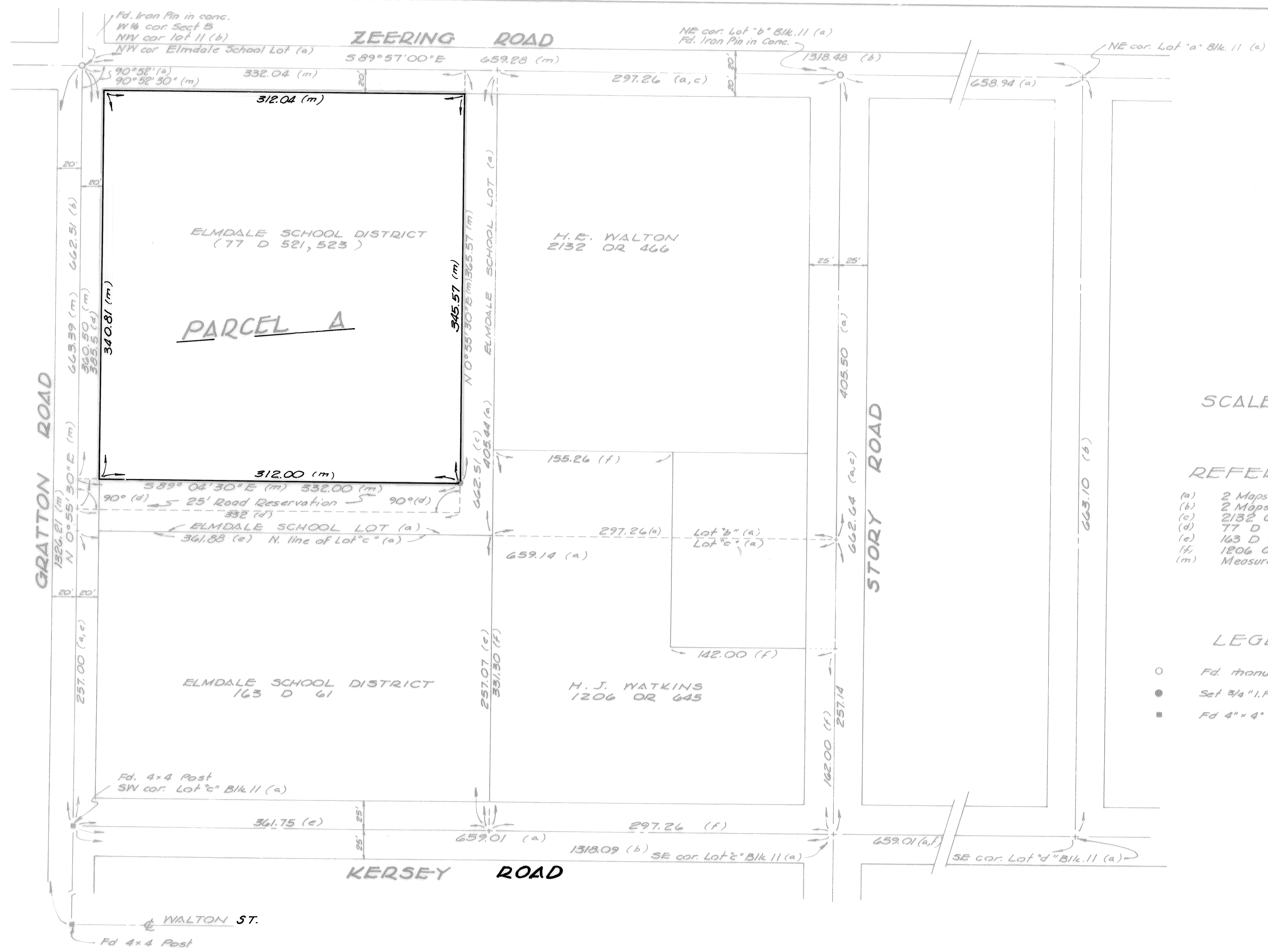


6-PM-72



BASIS OF BEARINGS

Bearing of 589°51'E for the
Zeering Road as shown in
Volume 6 R.S. 65, Stanislaus County
Records.

SCALE 1" = 60'

REFERENCES

- (a) 2 Maps 41, Sub'd Lots 9-16 Elmwood Colony
- (b) 2 Maps 13, Elmwood Colony
- (c) 2132 OR 466, Walton Deed
- (d) 77 D 521, 523, Elmdale School Dist Deed
- (e) 163 D 61
- (f) 1806 OR 645, Watkins Deed
- (m) Measured on this Survey

LEGEND

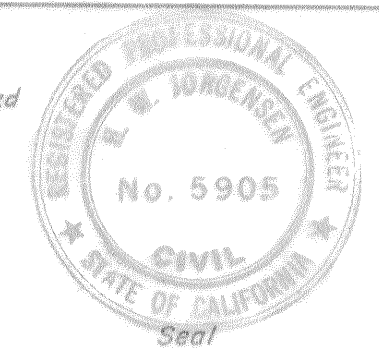
- Fd. monument as noted
- Set 3/4" I.P. Tagged RCE 5905
- Fd. 4" x 4" Post

NOTE: All of Lot 11 of the
"Subdivision of Lots 9-16
of the ELMWOOD COLONY"
lies within the SW 1/4 of Sect.
5, T5S, R11E, MDM
Stanislaus County, California.

SURVEYOR'S CERTIFICATE

This map was prepared by me or under my direction and was compiled from a field survey in conformance with the requirements of the Subdivision Map Act of the request of DENAIR COMMUNITY SERVICES DISTRICT on JAN. 1969. I hereby certify that it conforms to the approved tentative map and the conditions of approval thereof; that all provisions of applicable state law and local ordinances have been complied with.

by *H.W. Jorgensen*



COUNTY SURVEYOR'S CERTIFICATE

This map has been examined this 11th day of FEB., 1969, for conformance with the requirements of Section 11575 of the Subdivision Map Act.

RICHARD G. BARHITE
County Surveyor
by *Boyer E. Lewis*
Deputy

RECORDER'S CERTIFICATE

Filed for record this 12th day of Feb. 1969, at 1:15 p.m. in Book 6 of Instr. No. 4816. Noted by *Steve R. Nelson*
County Recorder

JORGENSEN-TOLLADAY ENGINEERS

CONSULTING CIVIL & SANITARY ENGINEERS
MODESTO MERCED FRESNO SONORA
DRAWN BY: *MB*
SCALE: 1" = 60'
DATE: FEB 11, 1969
CHECKED BY: *Bulton*
APPROVED BY: *H.W. Jorgensen*

PARCEL MAP

for DENAIR COMMUNITY SERVICES DISTRICT
A portion of the ELMDALE SCHOOL LOT as shown on the map "Subdivision of Lots 9-16 of the ELMWOOD COLONY" Recorded in Vol. 2 Maps at page 41, Stanislaus County Recorder JOB 723.4

6-PM-72