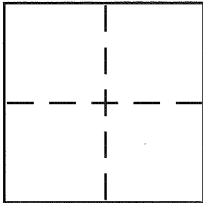


**CORNER RECORD**Document Number CR 5326City of BERKELEYCounty of ALAMEDA, CaliforniaBrief Legal Description CITY OF BERKELEY MONUMENT B2019**CORNER TYPE**

Government Corner ☐ Control ☒  
 Meander ☐ Property ☐  
 Rancho ☐ Other ☐  
 Date of Survey 11.23.12

**COORDINATES (Optional)**

N. \_\_\_\_\_  
 E. \_\_\_\_\_  
 Zone \_\_\_\_\_ NAD27 ☐ NAD83 ☐  
 NAD83 Epoch \_\_\_\_\_  
 Elev. \_\_\_\_\_  
 Vert. Datum: NGVD29 ☐ NAVD88 ☐  
 Meas. Units: Metric ☐ Imperial ☐

Corner - Left as found ☒ Found and tagged ☐ Established ☐ Reestablished ☐ Rebuilt ☐

Identification and type of corner found: Evidence used to identify or procedure used to establish or reestablish the corner:

IN COMPLIANCE WITH SECTION 8771 OF THE PROFESSIONAL LAND  
SURVEYORS' ACT, THIS CORNER RECORD IS BEING FILED TO ESTABLISH  
THE POSITION OF AN EXISTING MONUMENT PRIOR TO SEWER RECONSTRUCTION.

A description of the physical condition of the monument as found and as set or reset:

CITY OF BERKELEY STANDARD MONUMENT WITH 1/4" BRASS PIN

**SURVEYOR'S STATEMENT**

This Corner Record was prepared by me or under my direction in conformance with  
 the Land Surveyors Act on NOVEMBER 23 2012

Signed [Signature] P.L.S. or P.C.E. No. 5003

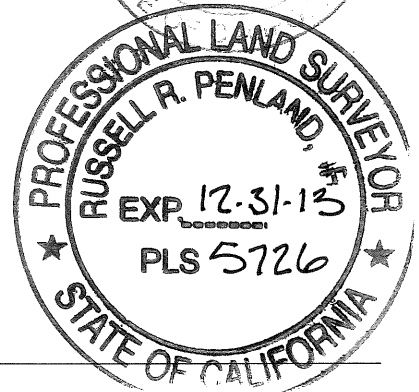
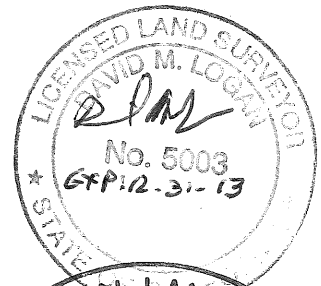
**COUNTY SURVEYOR'S STATEMENT**

This Corner Record was received \_\_\_\_\_  
 and examined and filed 3-20-13

Signed [Signature] P.L.S. or P.C.E. No. 5726

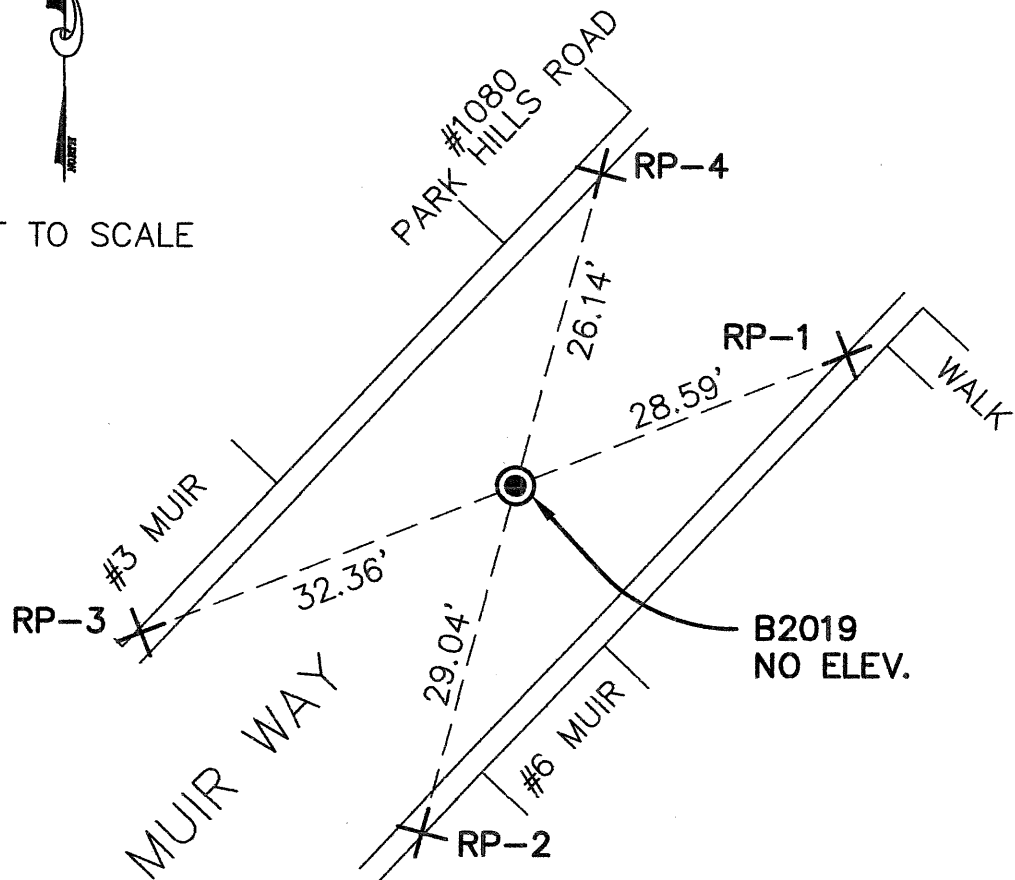
Title COUNTY SURVEYOR

County Surveyor's Comment \_\_\_\_\_





NOT TO SCALE



NOTE:  
THE EXISTING MONUMENT AS SHOWN IS  
REFERENCED BY STRAIGHT LINES BETWEEN  
RP-1 TO RP-3 AND RP-2 TO RP-4.

LEGEND

● STANDARD CITY MONUMENT WITH 1/4" BRASS PIN

+ REFERENCE CROSS SET IN SIDEWALK