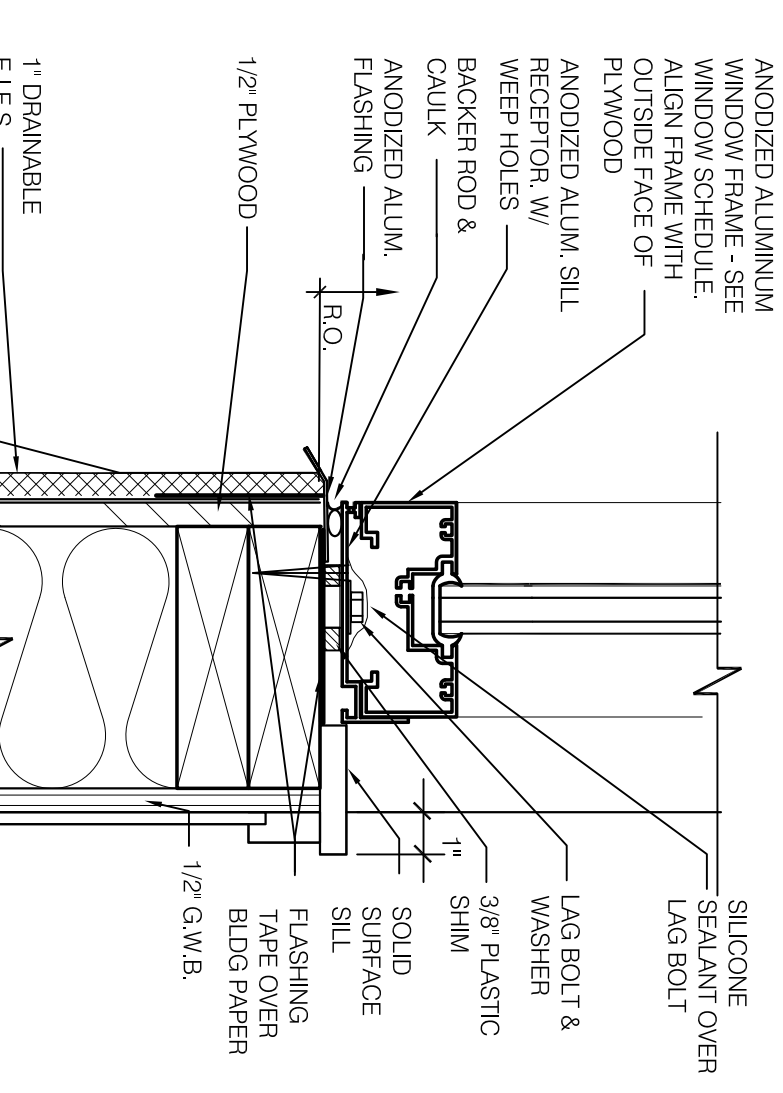


YAW826

TYPICAL WINDOW HEAD

3'-1'-0"

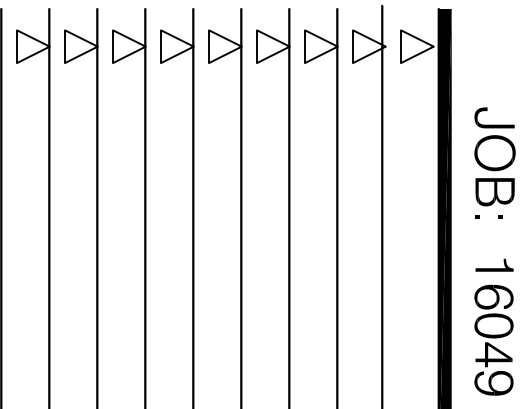
1



TYPICAL WINDOW SILL

3'-1'-0"

2



JOB: 16049

CONTRACT DATE: 4.3.17
BUILDING TYPE: EXPLORER LG-64
PLAN VERSION: NOVEMBER 2015
SITE NUMBER: XXXXX
STORE NUMBER: XXXX

TACO BELL

LAKEPOINT
EMERSON, GA 30137

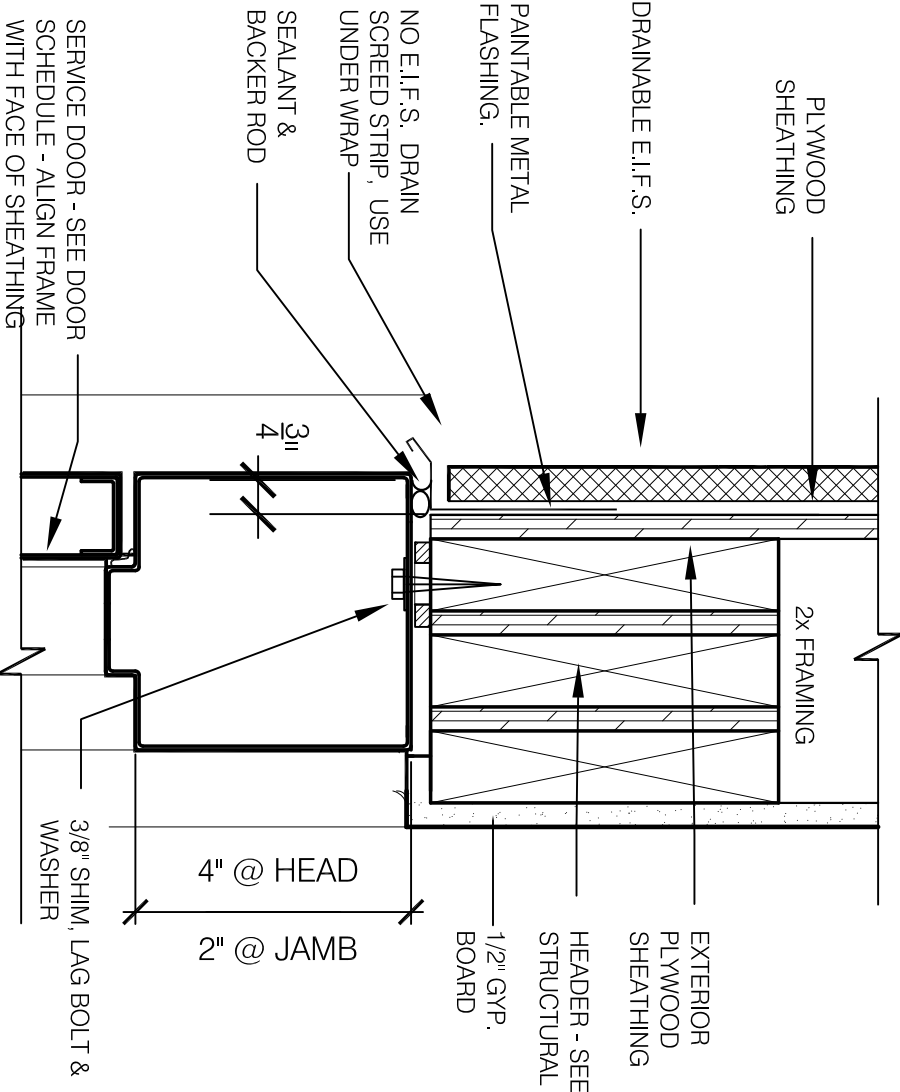


EXPLORER

**CONSTRUCTION
DETAILS
DOOR/WINDOW**

A6.1

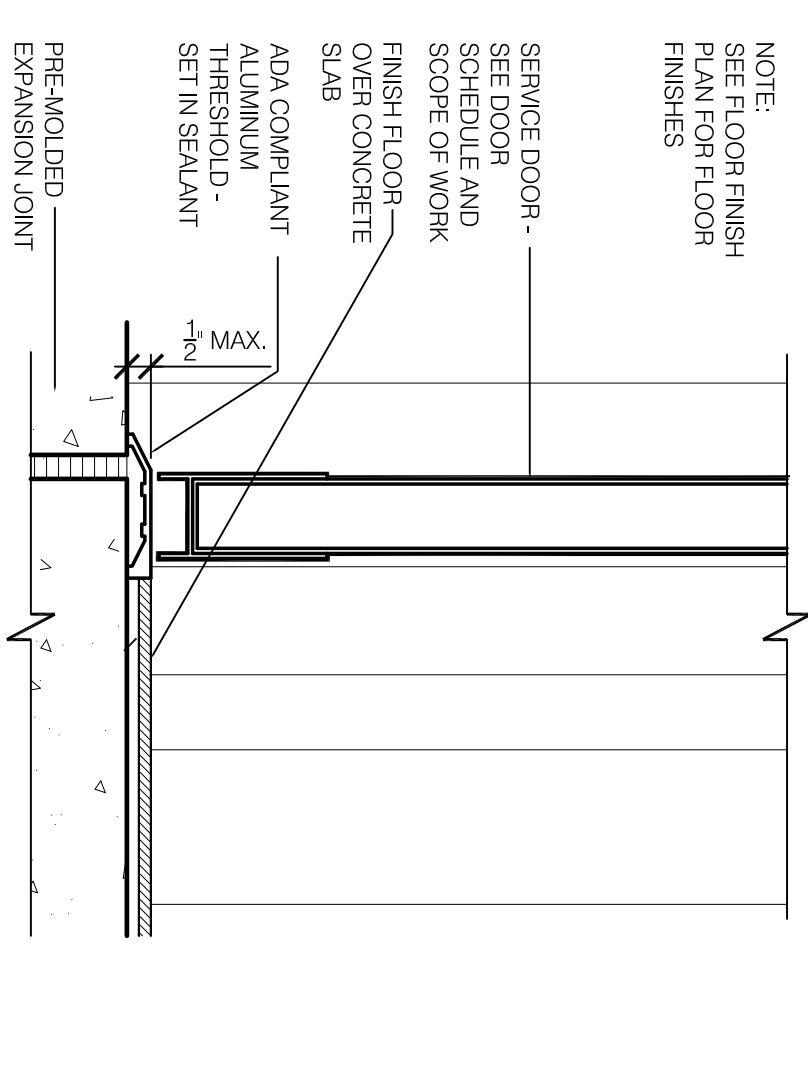
PLOT DATE: 08/17/17



HEAD / JAMB @ SERVICE DOOR

3'-1'-0"

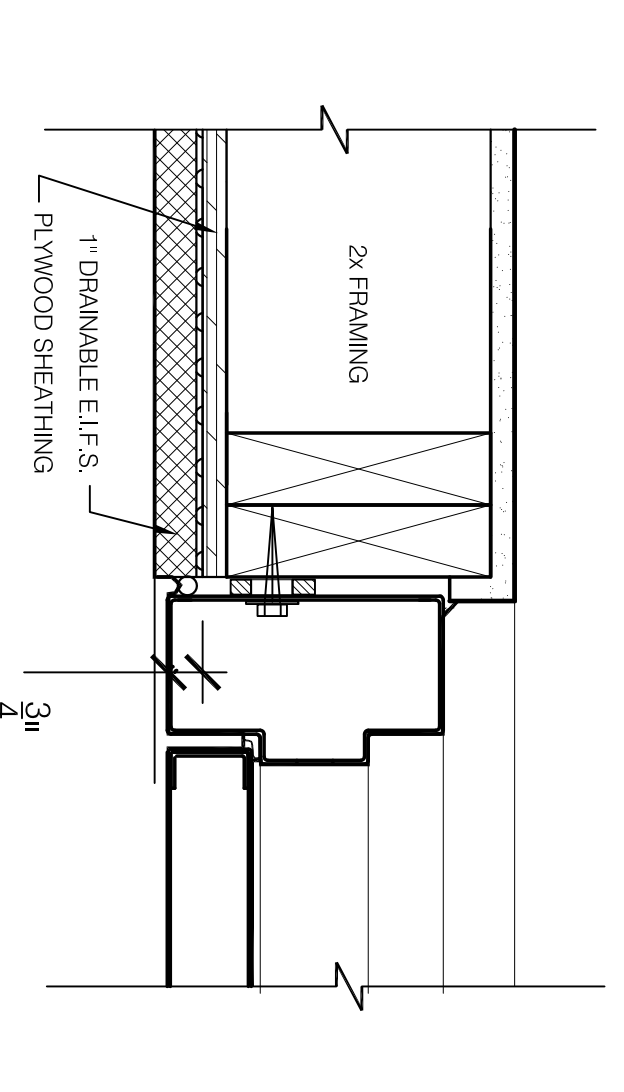
9



THRESHOLD @ SERVICE DOOR

3'-1'-0"

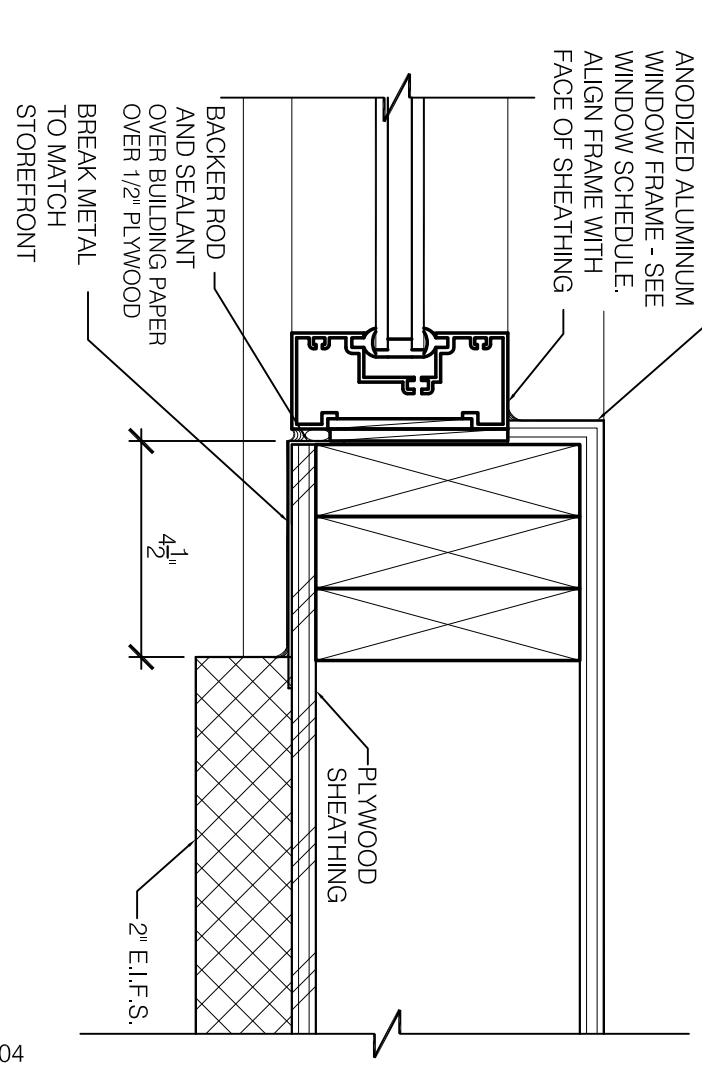
10



E.I.F.S. JAMB @ SERVICE DOOR

3'-1'-0"

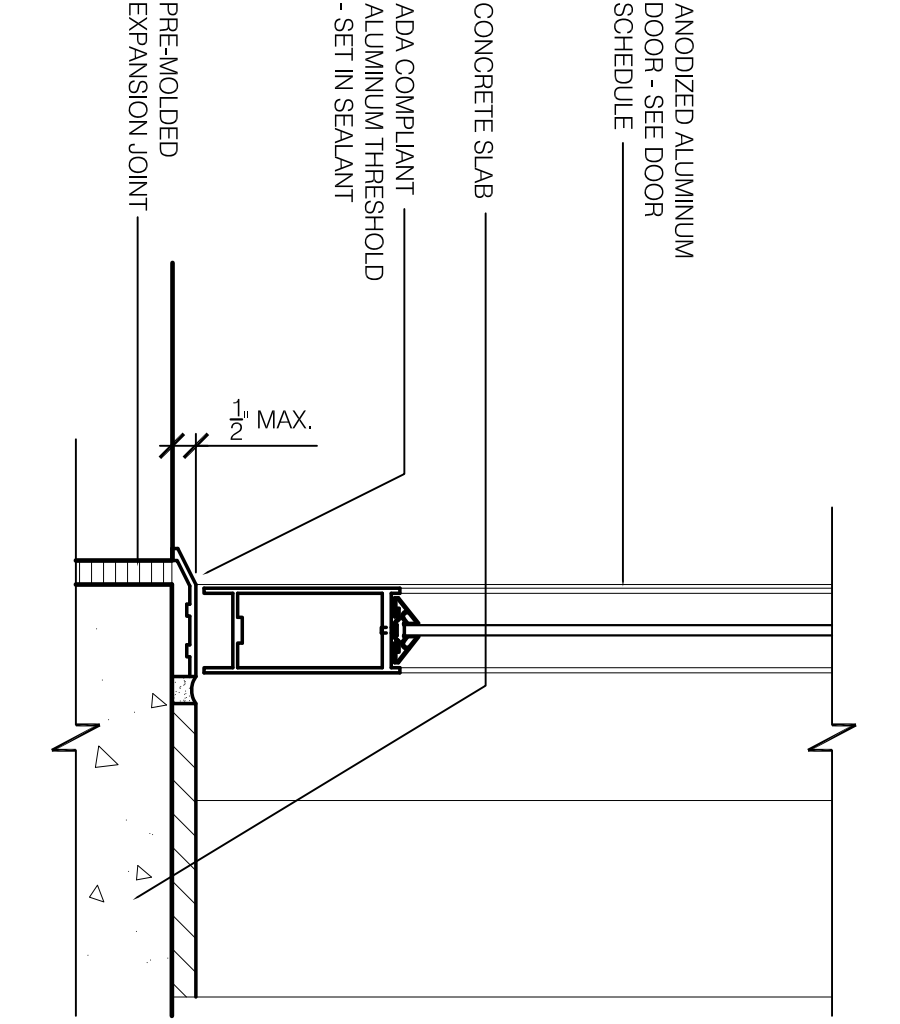
11



STOREFRONT JAMB DETAIL

3'-1'-0"

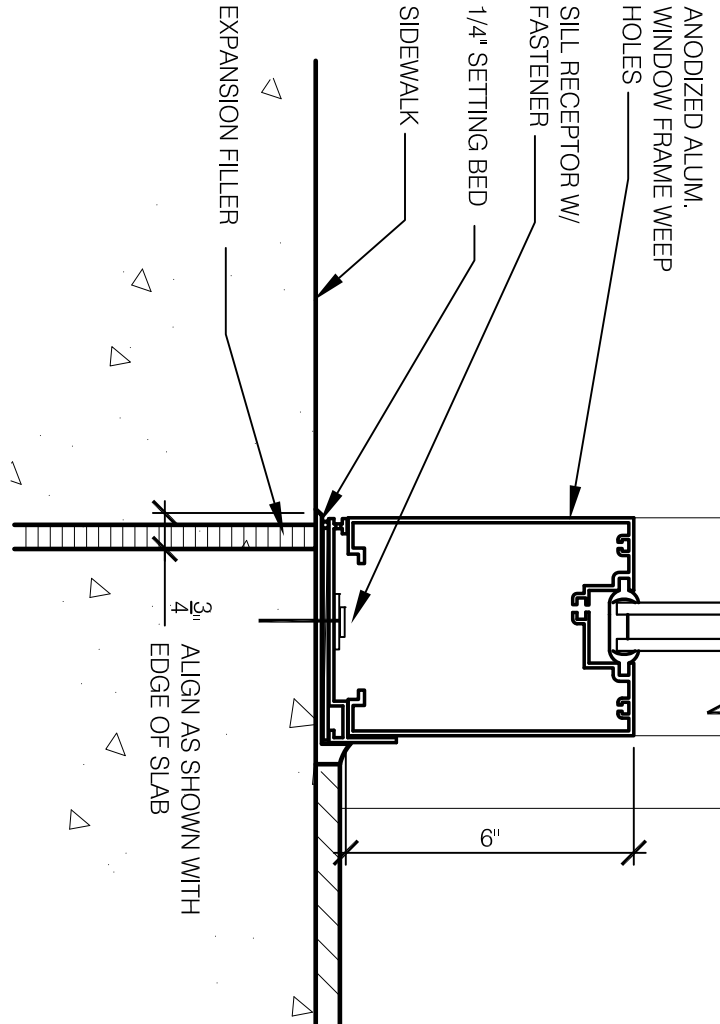
12



STOREFRONT DOOR SILL

3'-1'-0"

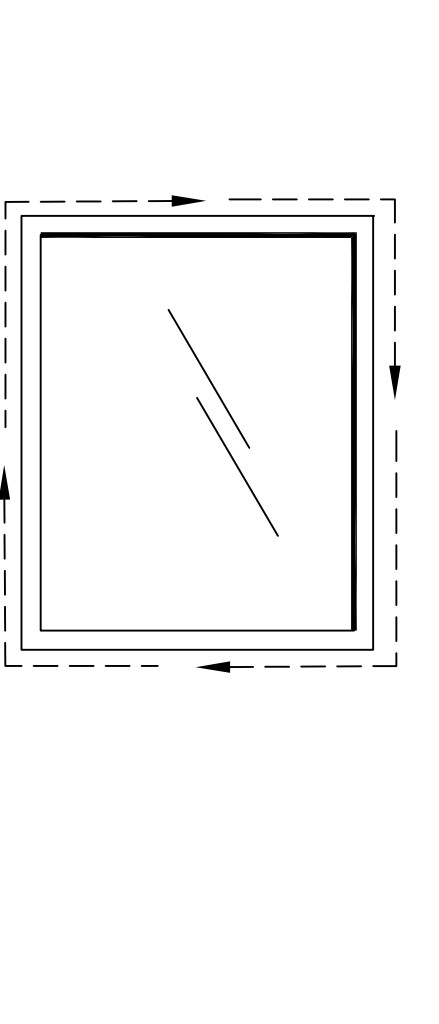
17



SILL @ FULL HEIGHT OPENINGS

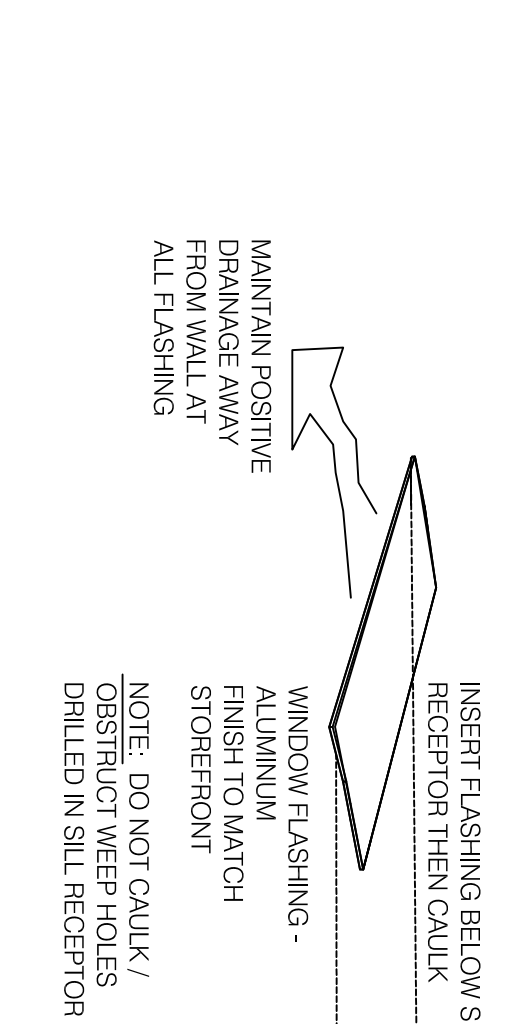
3'-1'-0"

18



WINDOW ELEVATION

NOTE: THERE SHOULD BE A 3/8" SPACE AROUND THE ENTIRE WINDOW FRAME TO ALLOW FOR A CONTINUOUS RING OF BACKER ROD AND CALK. SIMILAR TO A TYPICAL GASKET ON A BOTTLE TOP.



COMPLETING WINDOW SYSTEM

SET STOREFRONT WINDOW, APPLY EIFS SYSTEM AND THEN ADD WINDOW FLASHING OVER TOP OF EIFS AT WINDOW SILL.

TYPICAL WINDOW WALL WATER PROOFING

3'-1'-0"

16