

Fausto Romitelli

**DOMENICHE ALLA PERIFERIA  
DELL'IMPERO**

per quattro strumenti  
(1995 - 96)

PARTITURA

RICORDI

## FLAUTO BASSO

ES - IN      espirare - inspirare

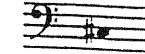
IN



"pizzicato" inspirato (con imboccatura chiusa):  
il suono prodotto è più grave di una 7<sup>a</sup> Maggiore



effetto:



IN



soffio inspirato (con imboccatura chiusa)



bicordo di armonici



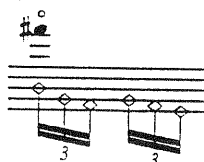
glissato d'imboccatura

↑ FA



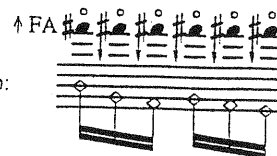
utilizzare le diteggiature indicate  
mantenendo **alzata** la chiave indicata

↑ FA



GRUPPI MICROTONALI: l'altezza indicata con nota  
nera senza gambo (●) all'inizio di ogni gruppo viene  
"tenuta" per tutta la durata del gruppo: le diteggiature  
indicate (con chiave alzata) devono solo **abbassare**  
l'intonazione della nota iniziale:

effetto:



Talora la nota iniziale è una fondamentale:

LA ↑



Più spesso un suono armonico:

LA ↑



## ARCHI



i tremoli sempre su 2 corde

MP - N

molto al ponticello - posizione normale dell'arco

### Nota:

Il brano richiede un'acustica molto riverberante. Se la sala non garantisce questo tipo  
d'acustica è necessario amplificare gli strumenti utilizzando un riverbero digitale.  
L'amplificazione del flauto basso è preferibile in ogni caso.

Ad Alter Ego

(♩ = 66)

flauto basso

ESpirare INspirare (imboccatura chiusa) ES IN ES IN ES

clarinetto basso sib

violino \*

con sordina

violoncello \*

con sordina

ghs. di armonici sulla IV.

MP\*\* (N)

MP (N)

MP (N)

MP

(idem la dinamica durante IN)

\* i tremoli sempre su 2 corde

\*\* MP = molto al ponticello  
N = normale

This is a handwritten musical score for a piano piece, consisting of ten staves. The notation is dense and includes various musical symbols and markings:

- Staff 1:** Features a triplet of eighth notes at the beginning. Above the staff, there are markings for  $\uparrow$  FA,  $\uparrow$  LA 3, and  $\uparrow$  FA. The notes are mostly eighth and sixteenth notes with slurs.
- Staff 2:** Includes a trill (tr.) and dynamic markings  $pp$ ,  $sf$ , and  $p$ . There are also slurs and phrasing slurs.
- Staff 3:** Starts with a  $pp$  marking and a  $mo$  (more) marking. It includes a  $(N)$  marking and a  $sf$  marking. The notation includes many slurs and phrasing slurs.
- Staff 4:** Continues the melodic line with slurs and phrasing slurs.
- Staff 5:** Includes a  $pp$  marking and a  $sf$  marking. There are also slurs and phrasing slurs.
- Staff 6:** Features a  $sf$  marking and a  $tr$  (trill) marking. The notation includes many slurs and phrasing slurs.
- Staff 7:** Includes a  $pp$  marking and a  $sf$  marking. There are also slurs and phrasing slurs.
- Staff 8:** Features a  $pp$  marking and a  $sf$  marking. The notation includes many slurs and phrasing slurs.
- Staff 9:** Includes a  $pp$  marking and a  $sf$  marking. There are also slurs and phrasing slurs.
- Staff 10:** Continues the melodic line with slurs and phrasing slurs.

Throughout the score, there are numerous slurs, phrasing slurs, and dynamic markings such as  $pp$  (pianissimo),  $sf$  (sforzando),  $p$  (piano), and  $mp$  (mezzo-piano). There are also markings for  $\uparrow$  FA,  $\uparrow$  LA 3, and  $\uparrow$  FA. The notation is complex and includes many slurs and phrasing slurs.

A handwritten musical score for piano, consisting of 12 staves. The notation is dense and complex, featuring a variety of rhythmic values, including triplets, sixteenth notes, and eighth notes. Dynamic markings such as *mp* (mezzo-piano), *sf* (sforzando), and *tr* (trills) are used throughout. Performance instructions like "trull" and "tr" are written above the staves. The score is divided into sections by large, sweeping lines. The key signature is one sharp (F#), and the time signature is 3/4. The notation includes many accidentals and ties, indicating a highly technical and expressive piece.

[illegible]



Handwritten musical score on four systems of staves. The notation includes various musical symbols such as notes, rests, beams, and dynamic markings. Above the staves, there are handwritten labels: "IN (eco)", "ES", "IN (eco)", "ES", "LA", "IN (idom)", "ES", "IN", "ES", and "LA". The score is written in a complex, expressive style, featuring many slurs, ties, and dynamic markings like *f*, *sf*, *tr*, and *trm*. The notation is dense and appears to be a personal or experimental manuscript.

Handwritten musical score, first system. The system consists of four staves. Above the first staff, the notes "IN" and "ES" are written. The notation includes various musical symbols such as notes, rests, and dynamic markings like *p* (piano) and *sf* (sforzando). There are also handwritten annotations like "trmm" and "tr" (trills) above some notes. The staves are connected by horizontal lines, and there are various slurs and ties throughout the system.

Handwritten musical score, second system. The system consists of four staves. Above the first staff, the notes "IN", "ES", "LA", "B", and "ES" are written. The notation includes various musical symbols such as notes, rests, and dynamic markings like *p* (piano), *sf* (sforzando), and *f* (forte). There are also handwritten annotations like "trmm" and "tr" (trills) above some notes. The staves are connected by horizontal lines, and there are various slurs and ties throughout the system.



Handwritten musical score, first system, consisting of four staves. The notation includes complex melodic lines with many slurs, ties, and trills. Dynamic markings such as *p* (piano) and *sf* (sforzando) are present. The key signature has one sharp (F#). The system concludes with a double bar line and the letters "FA" and "LA" written above the staff.

Handwritten musical score, second system, consisting of four staves. This system is more densely notated with frequent triplets, slurs, and ties. It includes dynamic markings like *sf* and *non brill.* (non brillante). Above the first staff, the letters "ES" are written. The system ends with a double bar line and the letters "IN" and "ES" written above the staff.

Handwritten musical score for three staves. The notation includes complex rhythmic patterns, accidentals, and dynamic markings. Key annotations include:

- Staff 1:** "non frull." (non-frullato), "frull." (frullato), "IN", "ES", "frull.", "non frull.", "IN", "ES", "frull.", "non frull.", "IN", "ES".
- Staff 2:** "frull.", "non frull.", "IN", "ES", "frull.", "non frull.", "IN", "ES".
- Staff 3:** "frull.", "non frull.", "IN", "ES", "frull.", "non frull.", "IN", "ES".

Handwritten musical score for three staves. The notation includes complex rhythmic patterns, accidentals, and dynamic markings. Key annotations include:

- Staff 1:** "frull.", "non frull.", "IN", "ES", "frull.", "non frull.", "IN", "ES", "frull.", "non frull.", "IN", "ES".
- Staff 2:** "frull.", "non frull.", "IN", "ES", "frull.", "non frull.", "IN", "ES".
- Staff 3:** "frull.", "non frull.", "IN", "ES", "frull.", "non frull.", "IN", "ES".

Handwritten musical score on a spiral-bound notebook page. The score consists of four staves with musical notation, including notes, rests, and dynamic markings like "pp" and "sfz". The notation is written in black ink. The first staff has a treble clef and a key signature of one sharp (F#). The second staff has a treble clef and a key signature of one sharp (F#). The third staff has a treble clef and a key signature of one sharp (F#). The fourth staff has a treble clef and a key signature of one sharp (F#). The notation includes various musical symbols such as notes, rests, and dynamic markings. The page is numbered -9- at the bottom center.