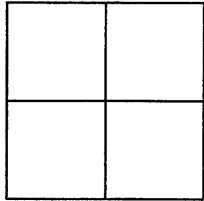


CORNER RECORD

APN No. 426 - 140 - - - - - (Optional)Document Number CR 2851Unincorporated HaywardCounty of ALAMEDA, CaliforniaBrief Legal Description East Avenue at Alameda County Station 55+01.60

CORNER TYPE

Government Corner ☐ Control ☐
Meander ☐ Property ☐
Rancho ☐ Other ☒
Date of Survey October 23, 2006

COORDINATES (Optional)

N. _____
E. _____
Zone _____ Datum _____
Elev. _____

Corner - Left as found ☒ Found and tagged ☐ Established ☐ Reestablished ☐ Rebuilt ☐

In compliance with Section 8771 of the Professional Land Surveyors' Act, this corner record is being filed to
ESTABLISH ☒ / REESTABLISH ☐ the position of an existing monument PRIOR ☒ / SUBSEQUENT ☐
to street or highway reconstruction. (Use this portion only when applicable.)

Identification and type of corner found: Evidence used to identify or procedure used to establish or reestablish the corner:
Reference points 1 & 3 form one diagonal line through the found Iron Bar.

Reference points 2 & 4 form a second diagonal line also through the found Iron Bar.

Note: Reference points 1 & 3 and 2 & 4 do not form diagonal lines through the found Railroad Spike.

A description of the physical condition of the monument as found and as set or reset: _____

Two found monuments were found and referenced:

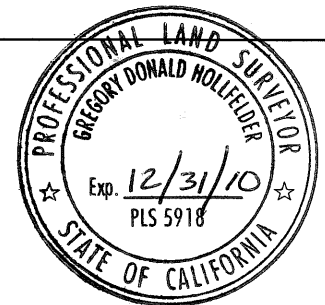
Found Iron Bar Stamped "LS 5666" TN31K6

Found R.R. Spike FA65ZA

SURVEYOR'S STATEMENT

This Corner Record was prepared by me or under my direction in conformance with
the Land Surveyors' Act on October 5, 20 09.

Signed Gregory Donald Hollfelder L.S. or R.C.E. Number 5918



COUNTY SURVEYOR'S STATEMENT

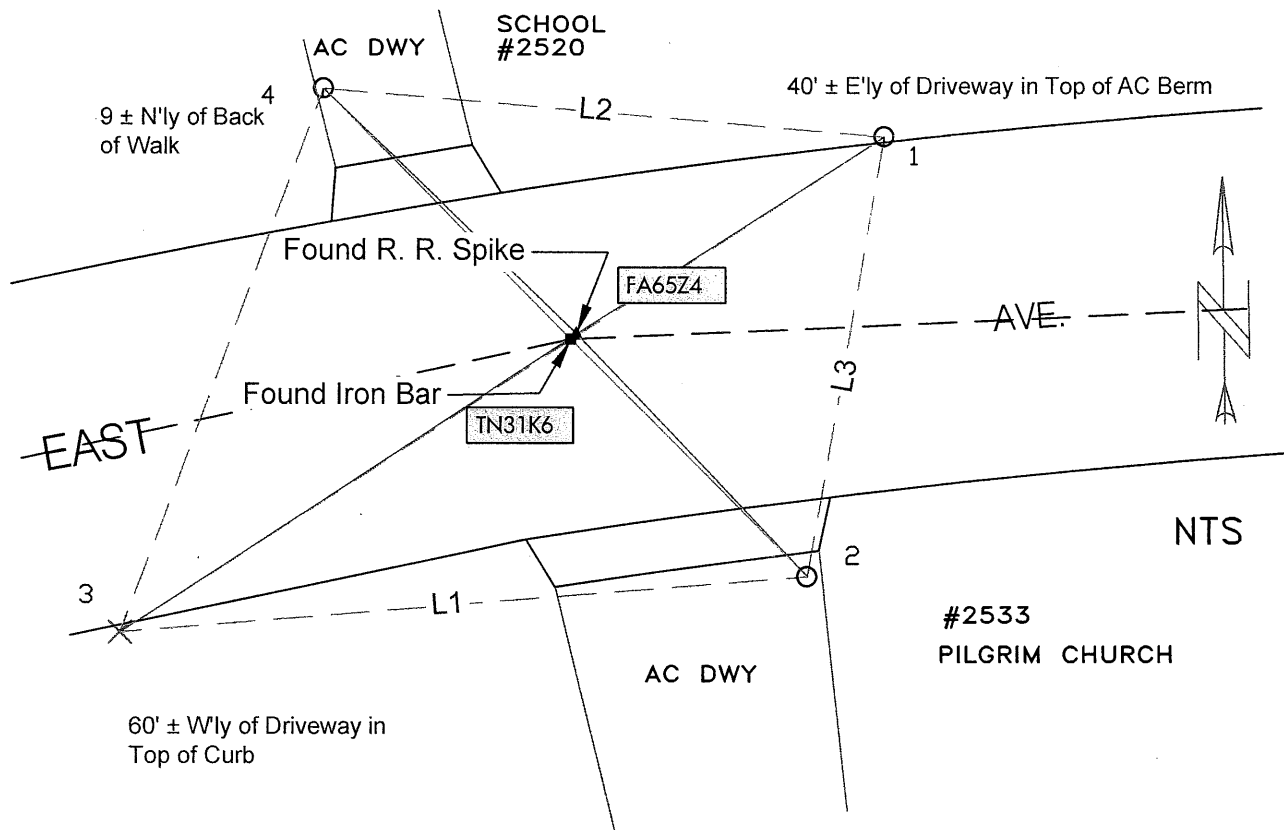
This Corner Record was received 10-24 20 06 and examined
and filed October 5TH 20 09.

Signed Russell R. Penland, Jr. Title County Surveyor



County Surveyor's Comment _____

TN31K5



LEGEND

- Set Magnetic Nail
- × Set Scribed "X"
- Found 1in. Iron Bar, Down 0.1 ft. Stamped "LS 5666"
- ▲ Found RR Spike, Down 0.4 ft

AA##A# Alameda County Monument ID System (PTa...) Typical.

Angle	
At - From -To	Angle
1-2-4	84°46'04"
1-3-2	312°51'20"
2-1-3	255°16'33"
2-4-1	55°05'24"
1-2-FA65Z4	47°25'27"
1-4-FA65Z4	322°39'27"
2-3-FA65Z4	50°55'31"
2-1-FA65Z4	306°11'52"
3-4-FA65Z4	36°27'01"
3-2-FA65Z4	331°41'45"
4-3-FA65Z4	293°10'08"
TN31K6-1-3	180°00'00"
TN31K6-2-4	180°00'00"

Distance	
Line	Dist
L1	80.34'
L2	65.73'
L3	51.67'
1-3	106.00'
2-4	79.82'
1-TN31K6	43.36'
2-TN31K6	38.76'
1-FA65Z4	42.50'
2-FA65Z4	38.79'
3-FA65Z4	63.50'
4-FA65Z4	41.04'

References

PM 8277 Bk 292, Pg 61

PM 5078 Bk 180, Pg27