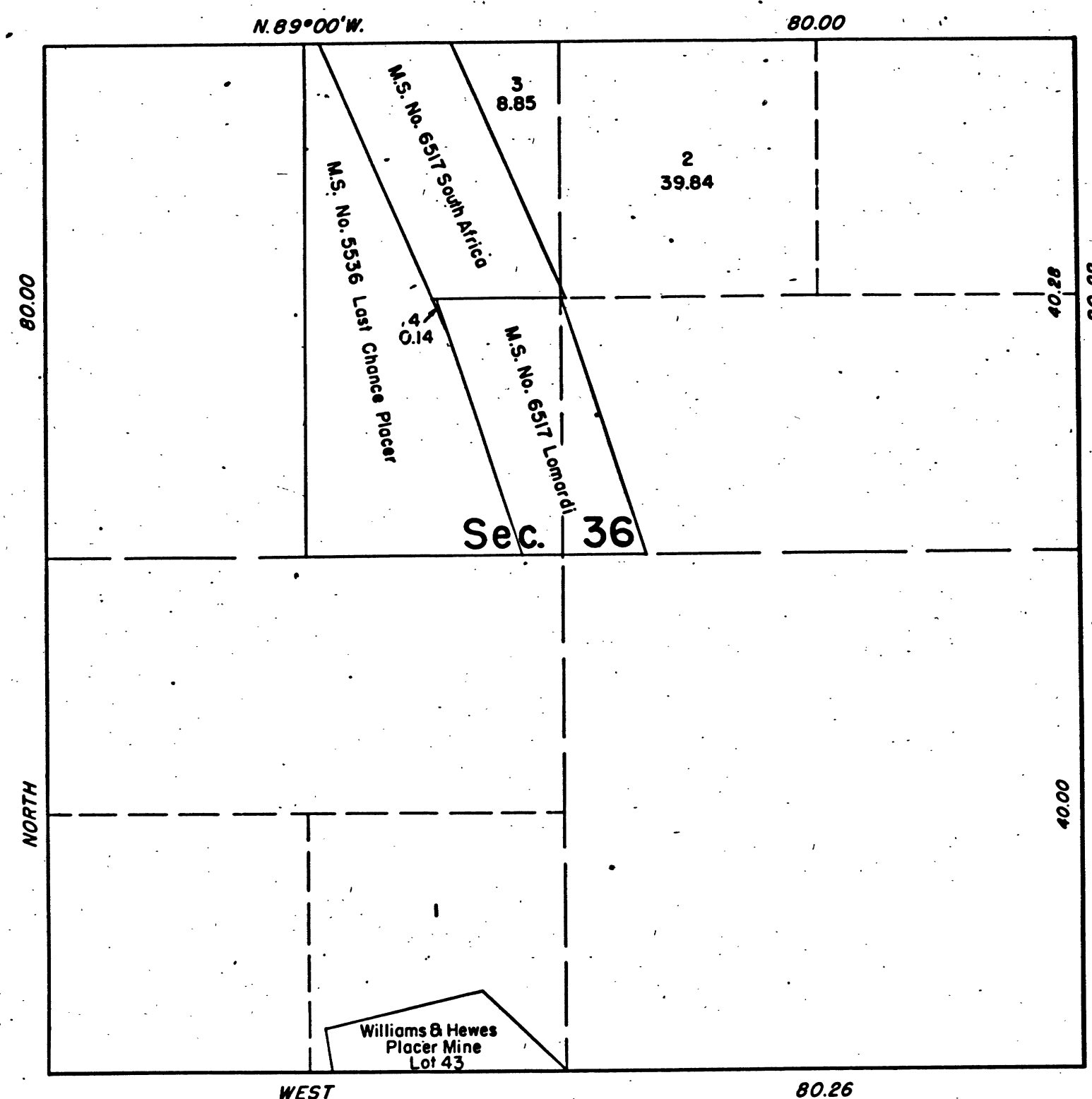


TOWNSHIP 5 NORTH, RANGE 11 EAST, OF THE MOUNT DIABLO MERIDIAN, CALIFORNIA.  
SUPPLEMENTAL PLAT



This plat, showing amended lottings in Section 36, T. 5 N., R. 11 E., Mount Diablo Meridian, California, is based upon the plat approved January 18, 1871 and the mineral plats approved March 31, 1922 and September 30, 1953.

UNITED STATES DEPARTMENT OF THE INTERIOR  
BUREAU OF LAND MANAGEMENT  
Washington, D. C. July 23, 1958

This plat, showing amended lottings, is based upon the official records, and having been correctly prepared in accordance with the regulations, is hereby accepted.

For the Director

*Garret J. Harrington*  
Cadastral Engineering Staff Officer

CHAINS  
20 40 60 80

41424 A

T5N, R11E, MDM

BLM 238