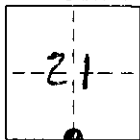


# CORNER RECORD

COUNTY OF ~~MONO~~ MONO T. 6N R. 23E MDB MERIDIAN CALIFORNIA  
 CORNER TYPE: GOV'T. CORNER ☒ MEANDER ☐ RANCHO ☐ CONTROL ☐ OTHER ☐  
 CORNER IDENTIFICATION - DATE OF VISIT October 21, 1983



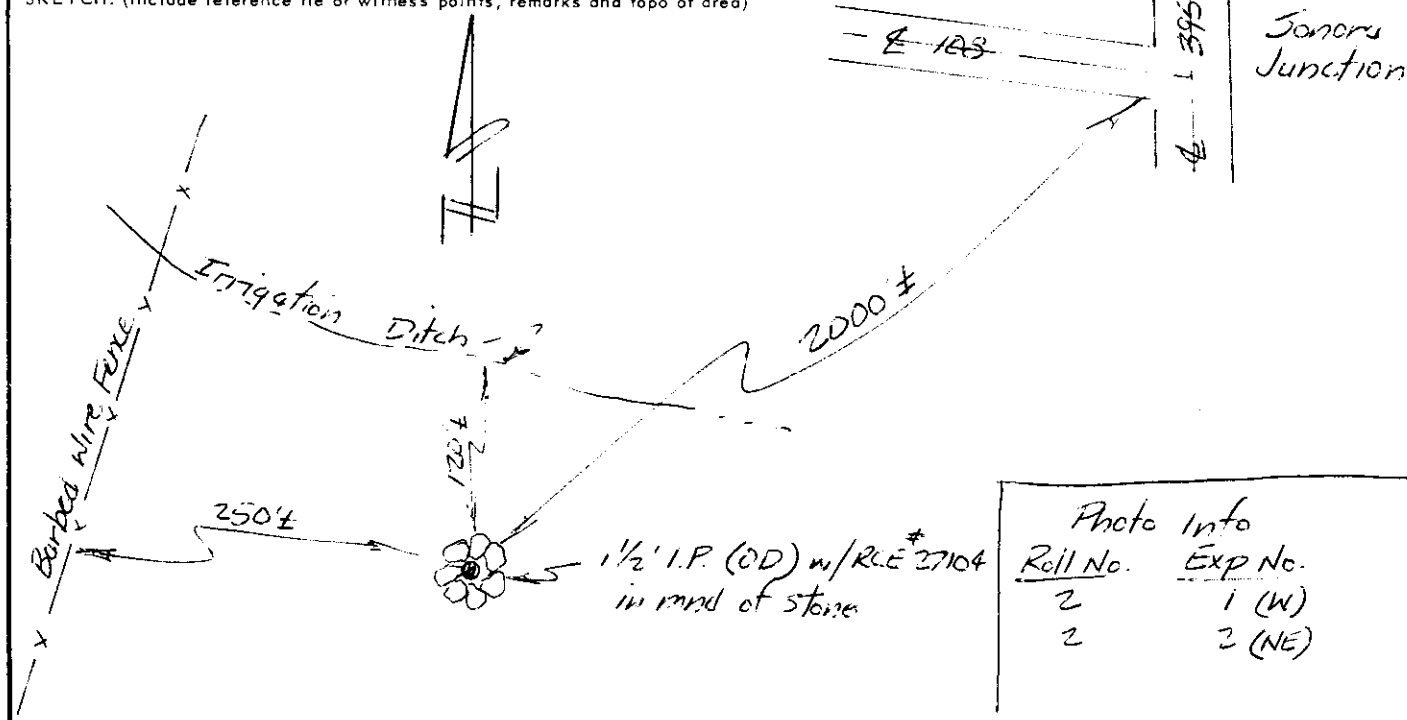
CORNER - LEFT AS FOUND ☒ FOUND AND TAGGED ☐ REESTABLISHED OBLITERATED CORNER ☐ REBUILT ☐

PHYSICAL DESCRIPTION OF CORNER FOUND: EVIDENCE AND METHOD USED TO IDENTIFY OR REESTABLISH Found 1 1/2" I.P. (OD)  
w/RCE # 27104 in center of old, partially overgrown, rock mound, 3' base by 1' high.  
A 4' metal post is 2.7' SE of the pipe. Located 50'± NE of an open grassy area, 120'±  
south of an irrigation ditch running E to W, 250'± east of a barbed wire fence  
running N to S and 2000'± SW of Sonora Junction.

PHYSICAL DESCRIPTION OF MONUMENTS REBUILT OR PERPETUATED

CALIFORNIA COORDINATE SYSTEM ORDER: FIRST ☐ SECOND ☐ THIRD ☐  
 STATIONS USED: NGS (USC & GS) ☐ STATE ☐ COUNTY ☐ OTHER ☐ STATION \_\_\_\_\_ STATION \_\_\_\_\_  
 ZONE \_\_\_\_\_ ELEVATION \_\_\_\_\_ NORTHINGS (Y) \_\_\_\_\_ EASTINGS (X) \_\_\_\_\_

SKETCH: (Include reference tie or witness points, remarks and topo of area)



## SURVEYOR'S CERTIFICATE

THIS CORNER RECORD WAS PREPARED BY ME OR UNDER MY DIRECTION IN CONFORMANCE WITH THE LAND SURVEYORS ACT ON October 21, 1983

SIGNED: R. L. Clark

L.S. or R.C.E. No.: Chief of Party - C. I. Trans

SEAL

## COUNTY SURVEYOR'S CERTIFICATE

THIS CORNER RECORD WAS RECEIVED 11-29 19 83 AND EXAMINED AND FILED 12-16 19 83

BY: Paula Bergman

TITLE: Deputy County Surveyor

DOCUMENT No. 6N-23-21-2

STATEMENT ON BACK OF SHEET

YES ☒ NO ☐