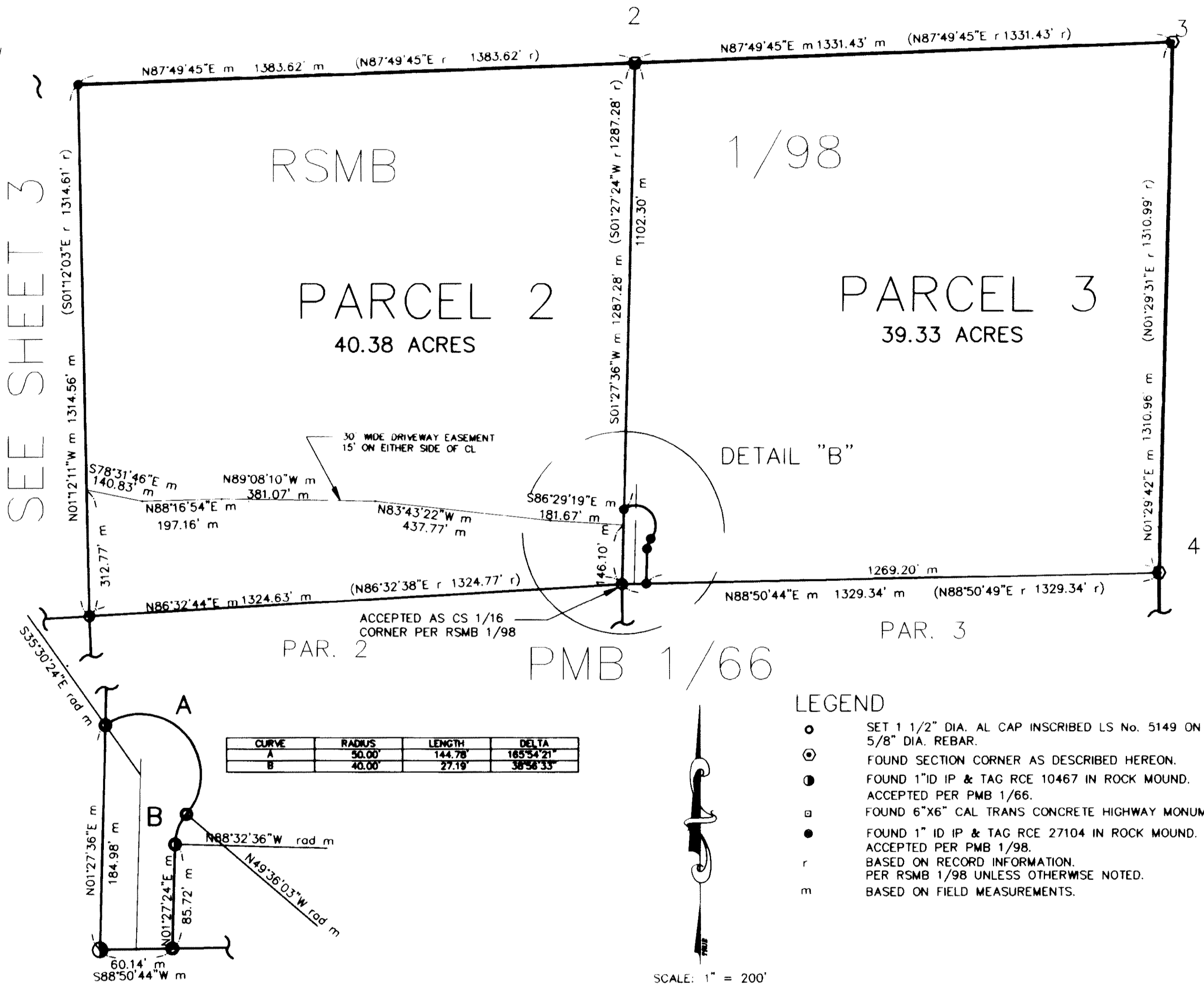


PARCEL MAP No. 32-52

A DIVISION OF A PORTION OF SEC 20, T6N, R24E,
MDB&M, MONO COUNTY, CALIFORNIA

RSMB 2/125



DETAIL "B" (NO SCALE)
PIMENTEL COURT

DESCRIPTION OF FOUND POINTS

- FOUND 3 1/4" DIA. AL. CAP IN 4' DIA. ROCK MOUND ON 2 1/2" DIA. AL. PIPE. INSCRIBED: USFS
CAP BEARS N18°06'27"E, 0.28' (N20°37'05"W r, 0.08' r PER RS 2/125) FROM PER RSMB 2/125
POSITION OF CORNER AS ORIGINALLY DETERMINED PER RSMB 1/98. MEASUREMENTS
SHOWN ARE TO ORIGINAL CORNER SET PER RSMB 1/98. MONUMENT NOT RESET. LS 3848
1991
- FOUND 3 1/4" DIA. AL. CAP IN 4' DIA. ROCK MOUND ON 2 1/2" DIA. AL. PIPE. INSCRIBED: USFS
CAP BEARS N18°11'39"E, 0.15' FROM POSITION OF CORNER AS ORIGINALLY DETERMINED PER RSMB 1/98. MEASUREMENTS SHOWN ARE TO ORIGINAL CORNER SET PER RSMB 1/98. MONUMENT NOT RESET. T6N R24E
E 1/16
-C C-
S20
LS 3848
1991
- FOUND 3 1/4" DIA. AL. CAP IN 4' DIA. ROCK MOUND ON 2 1/2" DIA. AL. PIPE. INSCRIBED: USFS
CAP BEARS N18°17'07"W, 0.12' (N16°15'22"E r, 0.11' r PER RS 2/125) FROM PER RSMB 2/125
POSITION OF CORNER AS ORIGINALLY DETERMINED PER RSMB 1/98. MEASUREMENTS
SHOWN ARE TO ORIGINAL CORNER SET PER RSMB 1/98. MONUMENT NOT RESET. T6N R24E
SE 1/16 S20
LS 3848
1991

PM Box 4/10/06