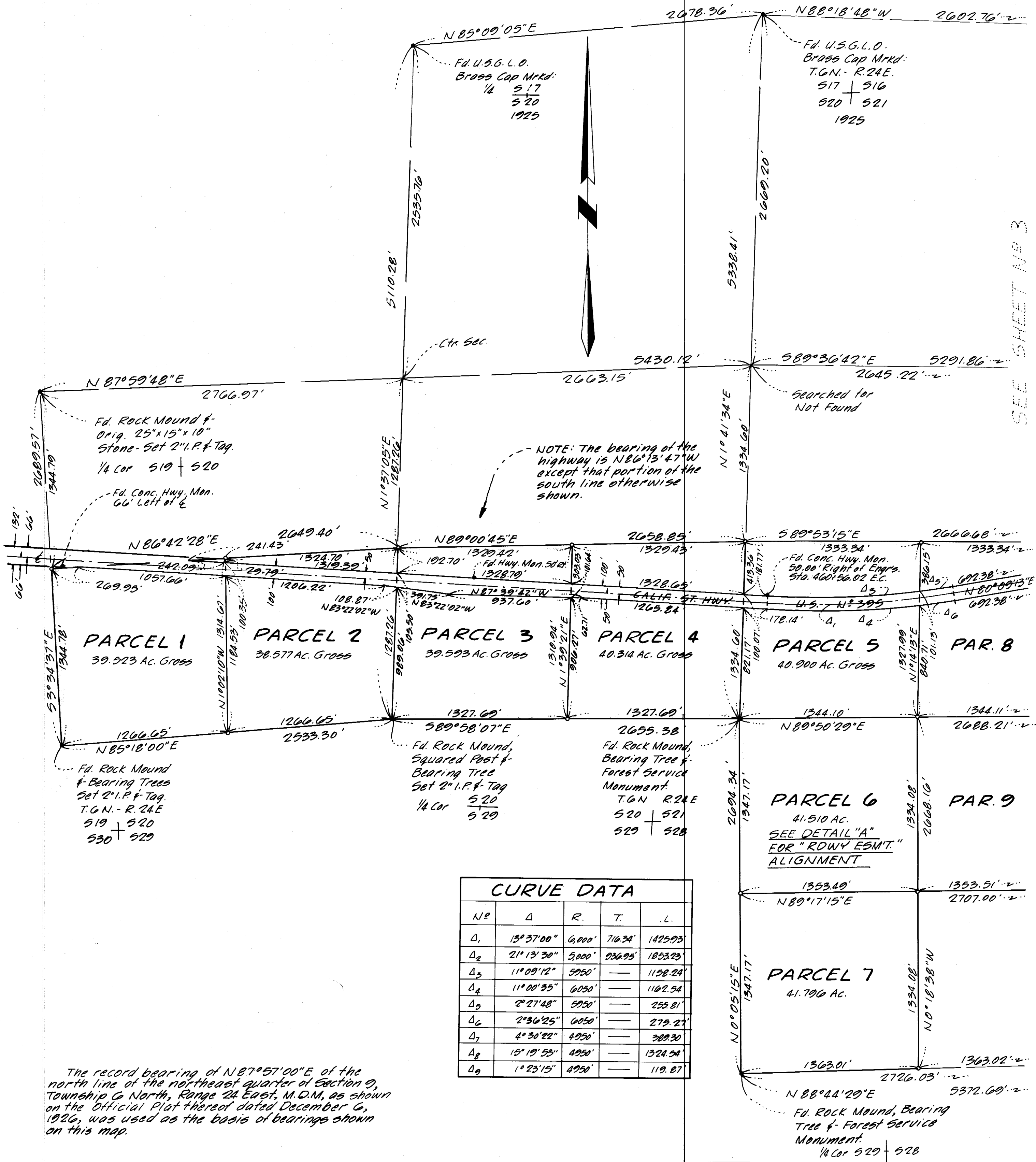


PARCEL MAP N°32-9

IN THE UNINCORPORATED TERRITORY OF
THE COUNTY OF MONO, STATE OF CALIFORNIA,
BEING A DIVISION OF A PORTION OF SEC-
TIONS 20, 21, 22, 27 AND 28, TOWNSHIP 6
NORTH, RANGE 24 EAST, M.D.M. ↙



- Indicates a found point as noted.
- Indicates a 1" I.P. & Tag set, unless otherwise noted.

The right-of-way of California State Highway U.S. N° 395 is per the Right-Of-Way Map filed in Book 2, Pages 7 to 7-2 incl. and Book 2, Page 8 to 8-14 incl. of State Highway Maps in the office of the County Recorder of Mono County and as described in the deed to the State of California, recorded in Book 6, Page 159 of Official Records.

| NET ACREAGES | | | |
|--------------|------------|------------|------------|
| Parcel N° | N. of Hwy. | S. of Hwy. | Total |
| 1 | 0.082 Ac. | 37.949 Ac. | 38.031 Ac. |
| 2 | 3.369 Ac. | 32.184 Ac. | 35.553 Ac. |
| 3 | 7.556 Ac. | 32.178 Ac. | 35.547 Ac. |
| 4 | 10.919 Ac. | 28.564 Ac. | 36.120 Ac. |
| 5 | 12.980 Ac. | 26.343 Ac. | 37.262 Ac. |
| 8 | 8.458 Ac. | 30.063 Ac. | 39.421 Ac. |
| 10 | 4.109 Ac. | 31.895 Ac. | 36.004 Ac. |
| 12 | 10.474 Ac. | 26.401 Ac. | 36.875 Ac. |

Plat Maps - Vol. 1, Pg. 66-A