

# CORNER RECORD

Agency Index

BK 131 PG 55

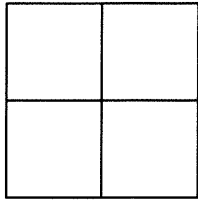
Document Number

CR 13776

City of OAKLAND

County of ALAMEDA, California

Brief Legal Description WELL MONUMENT LOCATED WITHIN 34TH ST AND HOLLIS ST



## CORNER TYPE

## COORDINATES (Optional)

Government Corner ☐ Control ☒  
Meander ☐ Property ☐  
Rancho ☐ Other ☐

N. \_\_\_\_\_ E. \_\_\_\_\_

Elevation \_\_\_\_\_

Units Metric ☐ U.S. Survey Foot ☐

Horizontal Datum \_\_\_\_\_

Zone \_\_\_\_\_ Epoch Date \_\_\_\_\_

Vertical Datum \_\_\_\_\_

☐ Complies with Public Resources Code §§8801-8819☐ Complies with Public Resources Code §§8890-8902

Date of Survey 10/24/19

PLS Act Ref: ☐ 8765 (d) ☒ 8771 ☐ 8773 ☐ Other: \_\_\_\_\_

Corner/  
Monument: ☒ Left as found ☐ Established ☐ Rebuilt ☒ Pre-Construction  
☐ Found and tagged ☐ Reestablished ☒ Referenced ☐ Post-Construction

Narrative of corner identified and monument as found, set, reset, replaced, or removed:

☐ See sheet #2 for description (s):

FOUND 3" BRASS DISK WITH PUNCH IN MONUMENT WELL.

FOUND AND SET POINTS AS SHOWN ON PAGE 2.

THIS POINT WAS REFERENCED PRIOR TO A CONSTRUCTION PROJECT IN THE VICINITY.

THE TIES SHOWN HEREON ARE FOR THE PURPOSE OF PERPETUATING FOUND MONUMENTATION.

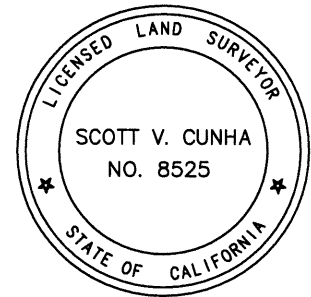
NO CLAIM IS MADE AS TO THE RELATIONSHIP OF THE POINTS OR LINES SHOWN HEREON TO TRUE BOUNDARY LOCATION.

## SURVEYOR'S STATEMENT

This Corner Record was prepared by me or under my direction in conformance with

the Professional Land Surveyors' Act on OCTOBER 30, 2019.

Signed SCOTT V. CUNHA P.L.S. or ~~P.O.E.~~ No. 8525



## COUNTY SURVEYOR'S STATEMENT

This Corner Record was received FEB 24 2020,

and examined and filed FEB 28 2020.

Signed D. Ian Wilson P.L.S. or ~~P.O.E.~~ No. 7010

Title ALAMEDA COUNTY SURVEYOR

County Surveyor's Comment



SCALE: 1"=30'

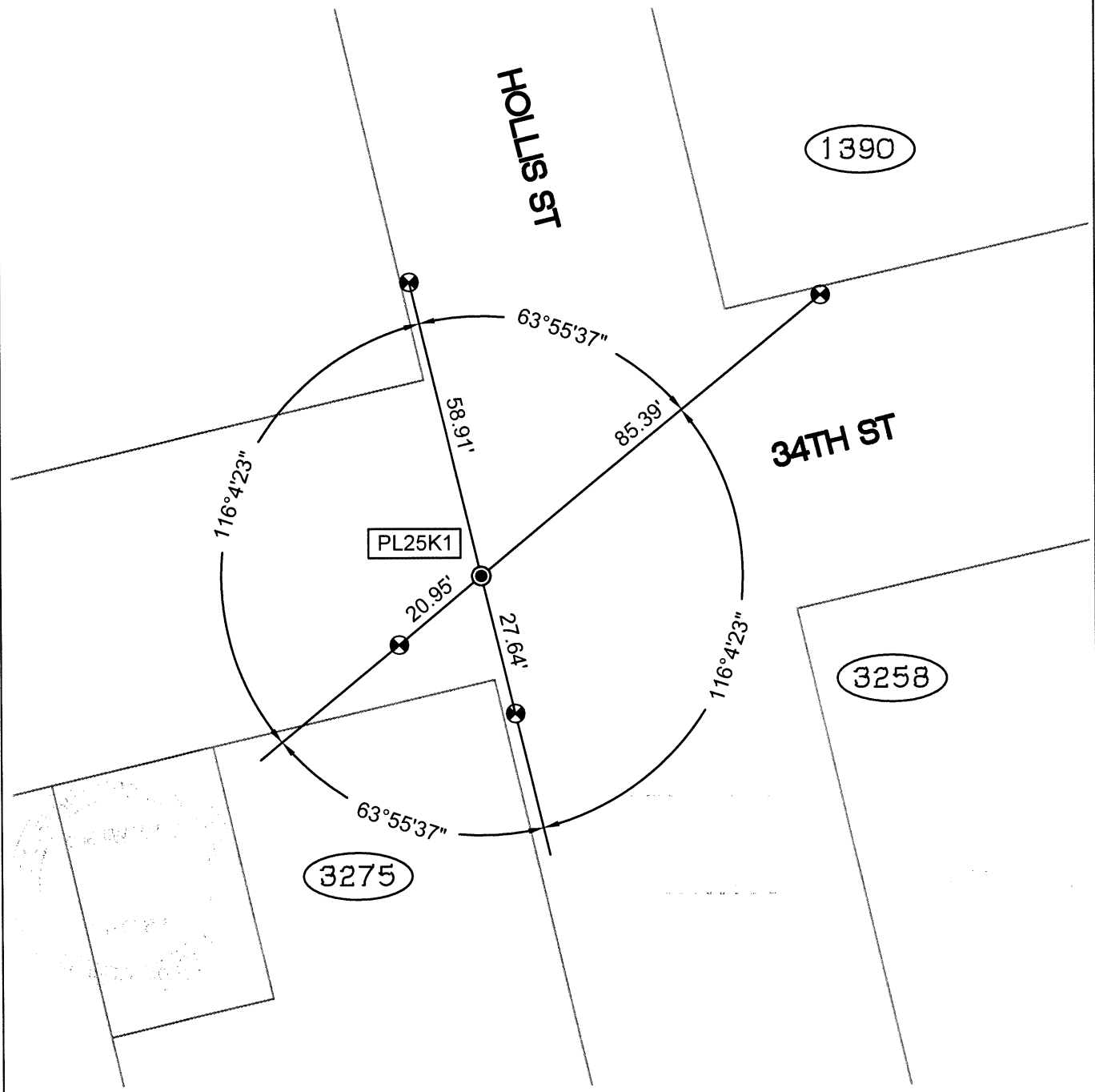
## LEGEND

● FOUND BRASS DISK WITH PUNCH IN MONUMENT WELL

⊗ SET CUT CROSS IN WALK

AA### ALAMEDA COUNTY MONUMENT ID

19592 REFERENCE STREET ADDRESS



219082-Hollis-CR-1