

VICINITY MAP

PARCEL MAP 4968

CITY OF FREMONT · ALAMEDA COUNTY · CALIFORNIA

BEING A RESUBDIVISION OF PARCEL 3 OF LOT LINE ADJUSTMENT 85-3
RECORDED ON SEPTEMBER 4, 1985 AT SERIES NO. 85-179404, OFFICIAL
RECORDS OF ALAMEDA COUNTY.

CONSISTING OF 2 SHEETS

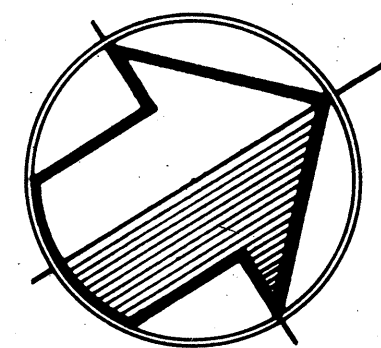
CREEGAN + D'ANGELO

Engineers · Planners · Surveyors

East Bay Regional Office

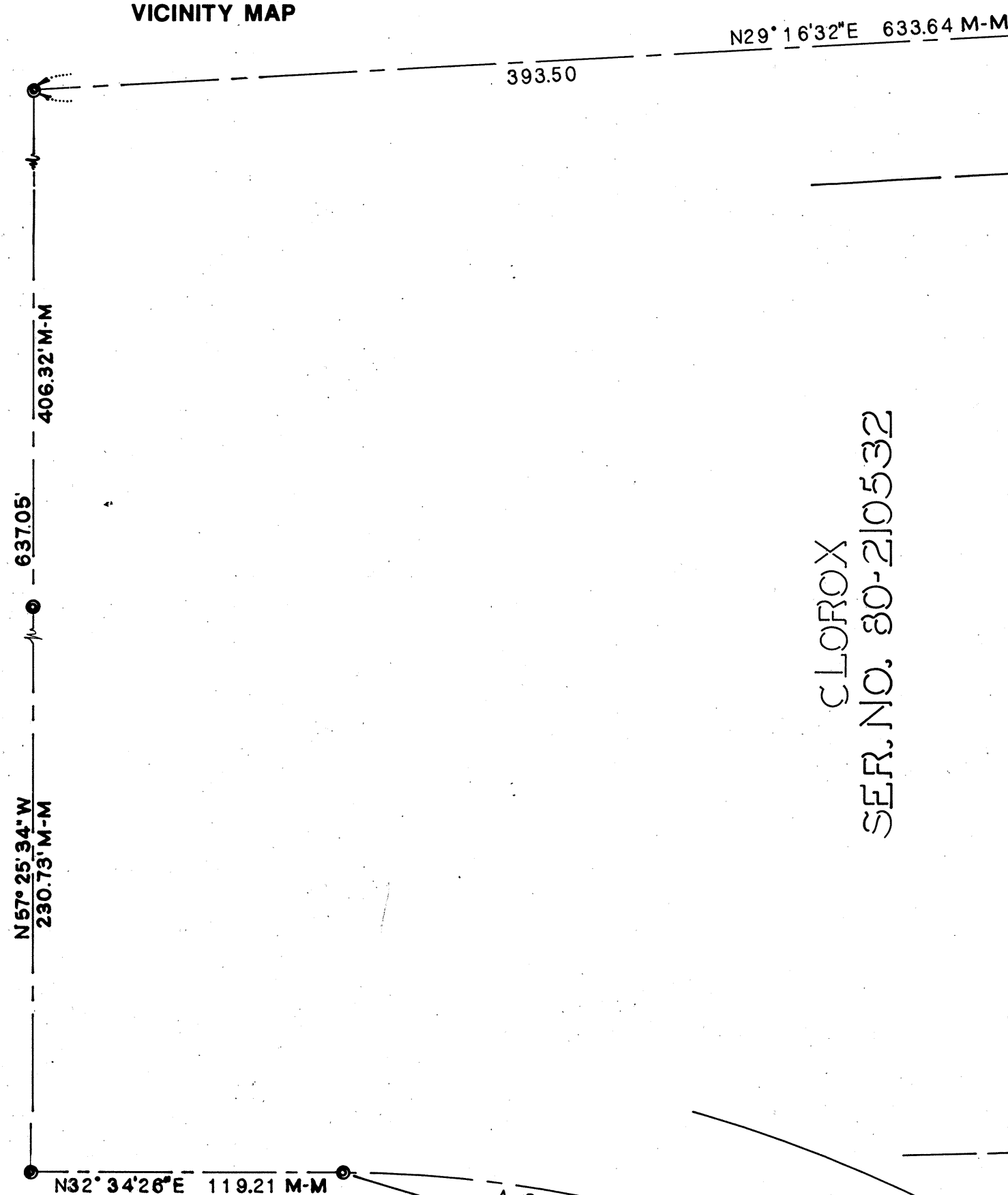
Pleasanton, CA 94566

MAY, 1988



1" = 50' scale

FREMONT BOULEVARD



CLOX
SER. NO. 80-210532

PARCEL 1
2.065± ACRES

PARCEL 2
2.457± ACRES

NO.	BEARING	DISTANCE
D1	N60°43'28"W	52.00
D2	N58°31'15"W	52.00
D3	N56°58'29"W	50.00
D4	N29°16'32"E	15.00
D5	N31°28'45"E	15.00
D6	N56°58'29"W	50.00
D7	N29°16'32"E	15.00
D8	N31°28'45"E	15.00
D9	N57°25'34"W	12.00 M-M
D10	N58°31'15"W	42.00
D11	N56°58'29"W	50.00

BASIS OF BEARINGS:

THE BEARING SOUTH 31° 28' 45" WEST OF THE MONUMENT LINE OF WALNUT AVENUE AS SHOWN ON PARCEL MAP 3020 FILED IN BOOK 111 OF PARCEL MAPS AT PAGES 87-89, OFFICIAL RECORDS OF ALAMEDA COUNTY, WAS TAKEN AS THE BASIS OF BEARINGS FOR THIS MAP.

BUILDING SETBACK LINES

BUILDING LOCATIONS AND SETBACKS TO BE PER CITY OF FREMONT ZONING ORDINANCE.

LEGEND

- BOUNDARY LINE
- PARCEL LINE
- EASEMENT LINE
- MONUMENT LINE
- P.U.E. PUBLIC UTILITY EASEMENT
- J.A.E. JOINT ACCESS EASEMENT
- M-M MONUMENT TO MONUMENT DISTANCE
- FOUND STANDARD CITY MONUMENT W/NO R.C.E. # (UNLESS NOTED OTHERWISE)
- E.V.A.E. EMERGENCY VEHICLE ACCESS EASEMENT
- T.L.E. TRAFFIC LOOP EASEMENT
- ALL DISTANCES ARE IN FEET AND DECIMAL PARTS THEREOF.

JOB NO. 486042.1 SDF/SKY/FCI

SUNDALE DRIVE

SHEET 2 OF 2 SHEETS

PM 4968
Map BK 178
pg 25