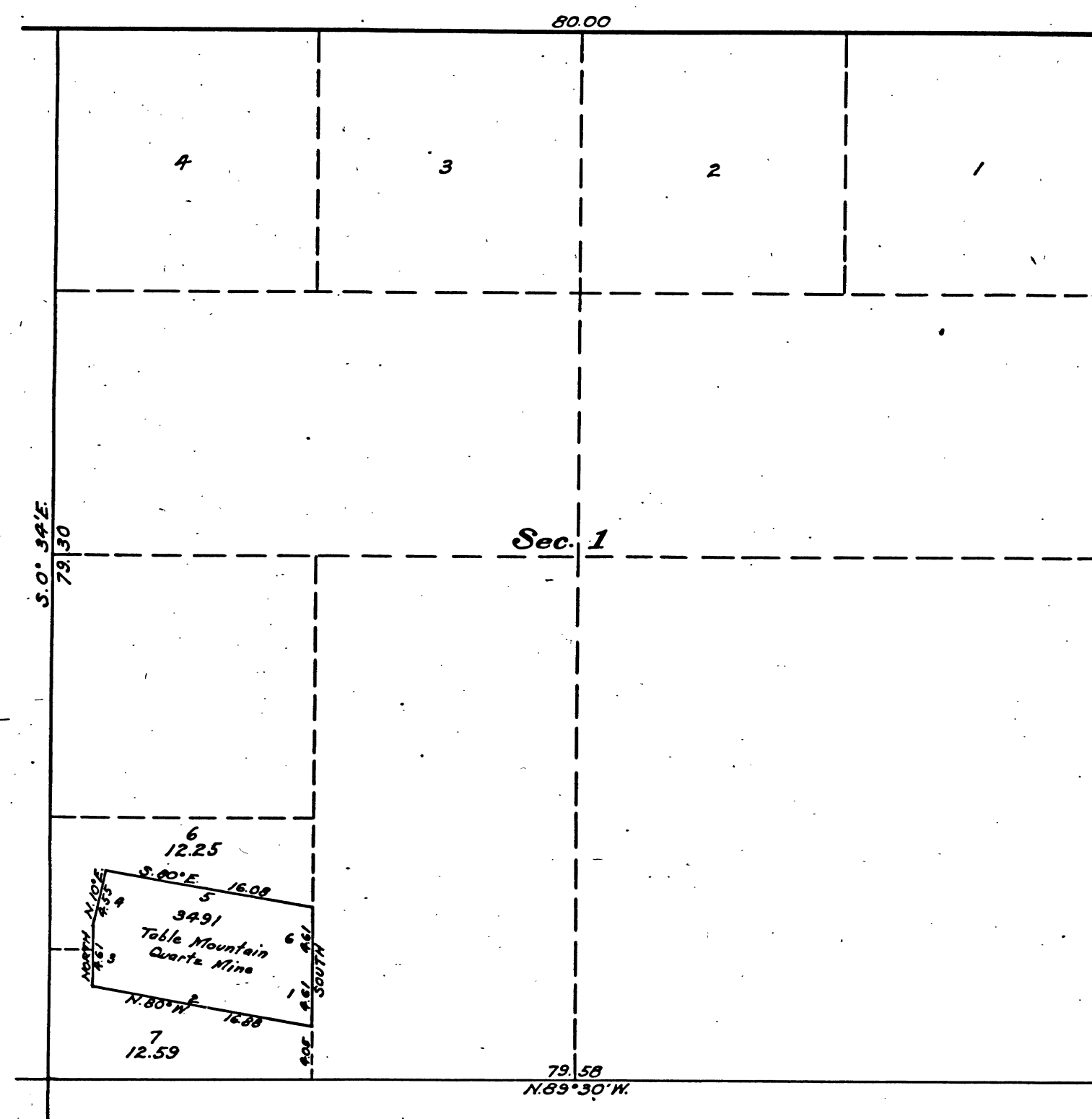


Supplemental Plat of Section 1,
Township N^o 4 North, Range N^o 13 East, Mount Diablo Meridian, California



Authorization: letter Sacramento 013220 "I" BH dated January 4, 1922.

This supplemental plat, showing the subdivision of lot 5, section 1, T. 4 N., R. 13 E., Mount Diablo Meridian, California, plats approved August 16, 1871 and October 23, 1897, is made for the purpose of obtaining the area and legal description of the north and south halves thereof to accommodate mineral entry Sacramento 013220, and is hereby approved.

U.S. Surveyor General's Office,
San Francisco, California,
January 11, 1922.

John D. Over
U.S. Surveyor General for California.

Scale 10 chains to an inch.

Mean Magnetic Declination.

Surveys Designated	By Whom Surveyed	Group		Amount of Surveys			When Surveyed	
		No.	Date	Mls.	chs.	lks.	Begun	Completed

HSP

The above map of Township No. _____ Range No. _____ of the
Meridian _____ is strictly conformable to the field notes of the survey thereof on file
in this office, which have been examined and approved.
U. S. Surveyor General's Office.

Surveyor General.

41 331

REGISTER AND RECEIVER RECEIPT

DATED MAR 6 1922

CHAINS
0 20 40 60 80 120

T 4 N R 13 E M D

BLM 171