

Imágenes normales del sistema músculo-esquelético



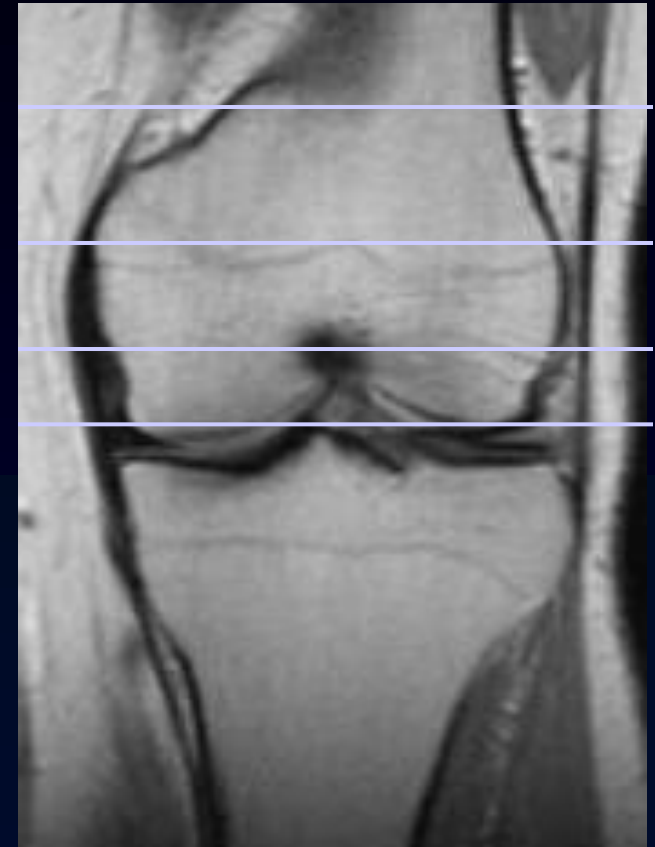
Cátedra de
Diagnóstico y Terapéutica por Imágenes
Facultad de Ciencias Médicas
Universidad Nacional de La Plata

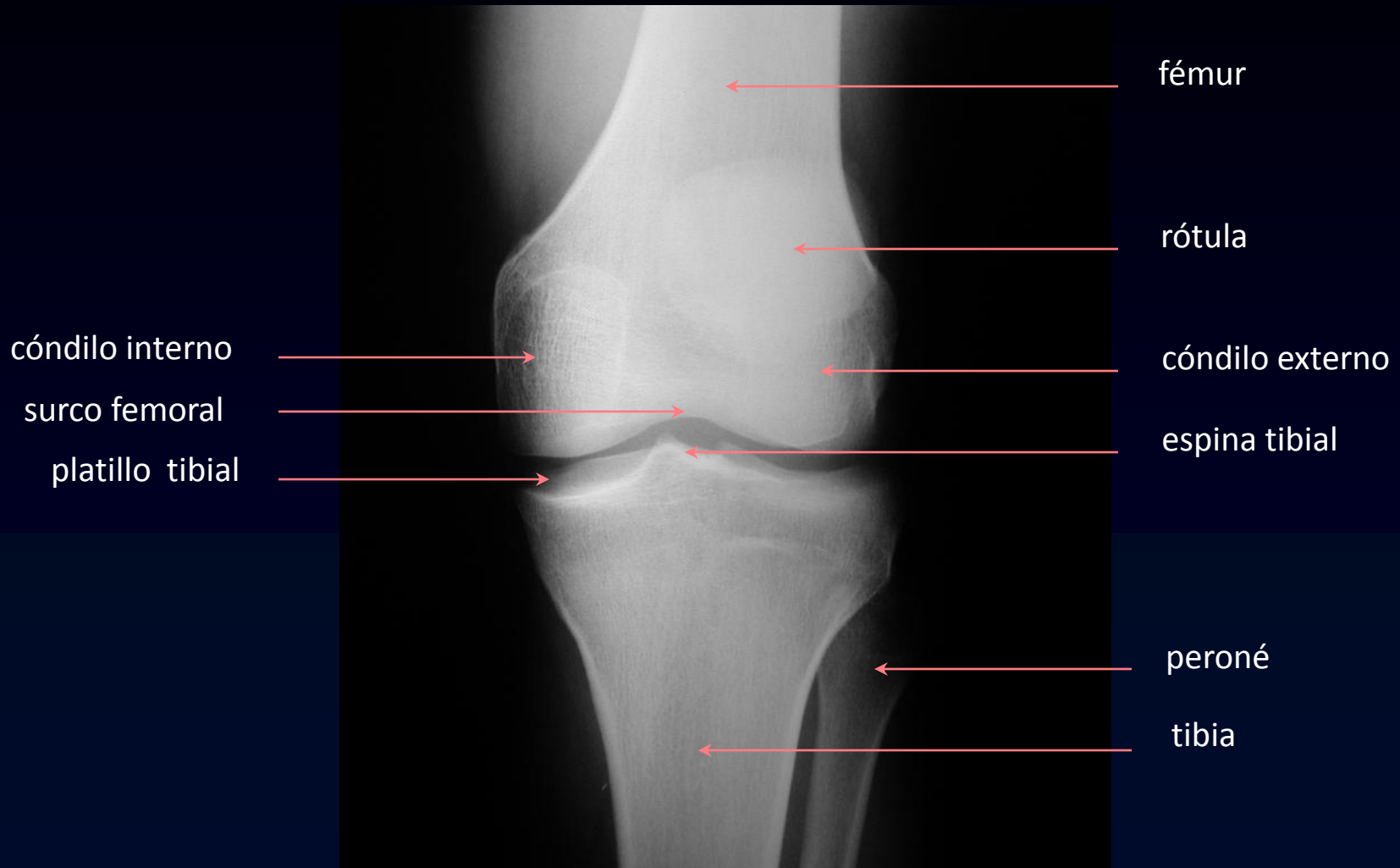
Rodilla Normal

Parámetros de exploración

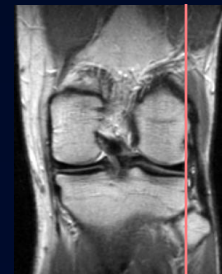
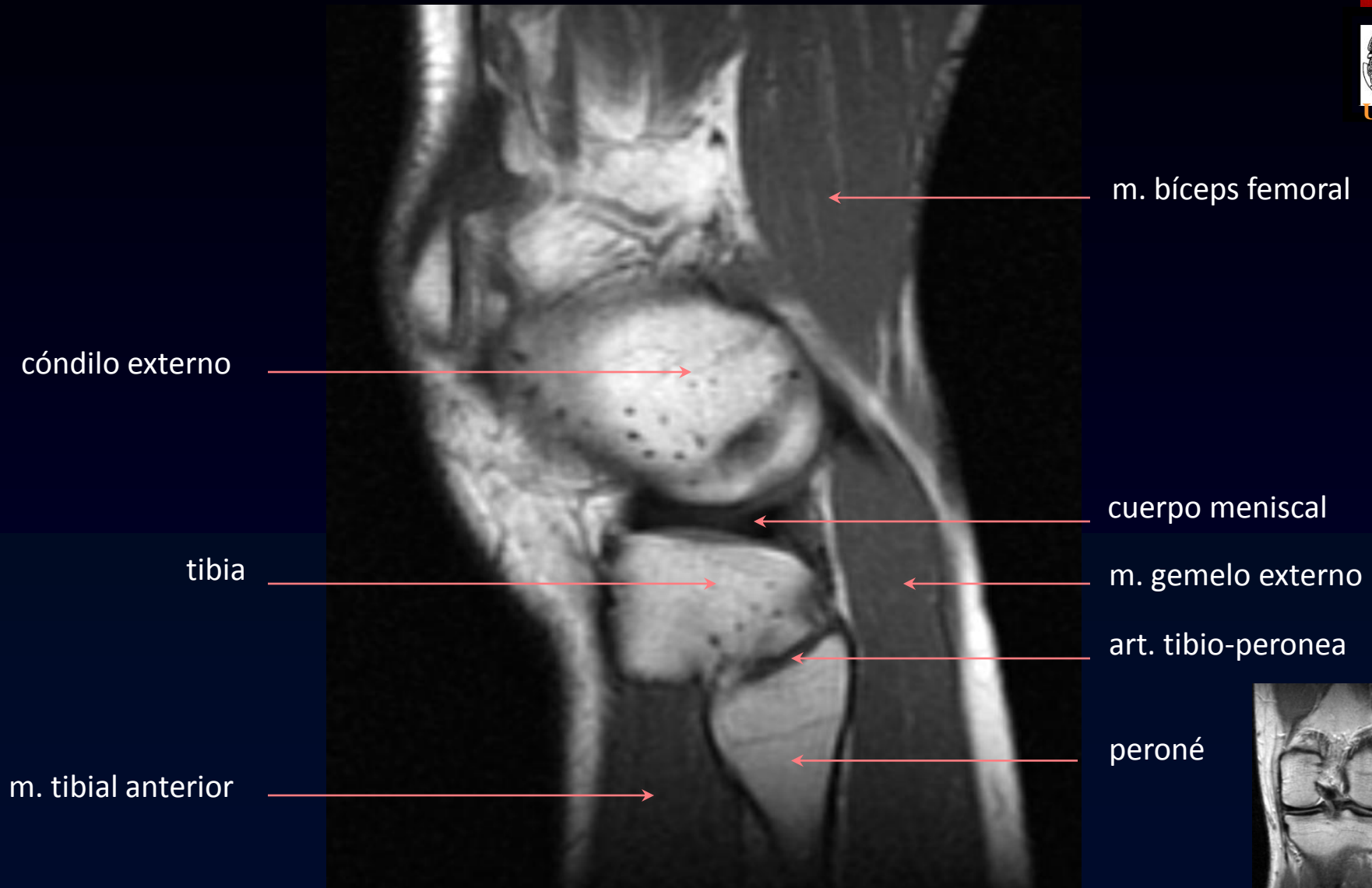
Secuencias y planos:

- Axial DP / T2
- Sagital T1
- Coronal DP / T2
- Sagital T2* (GRE)
- Supresión grasa (STIR)









cuerno anterior
menisco externo

tibia

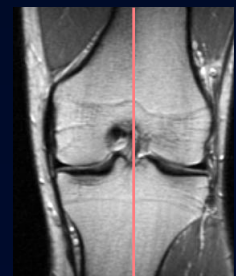
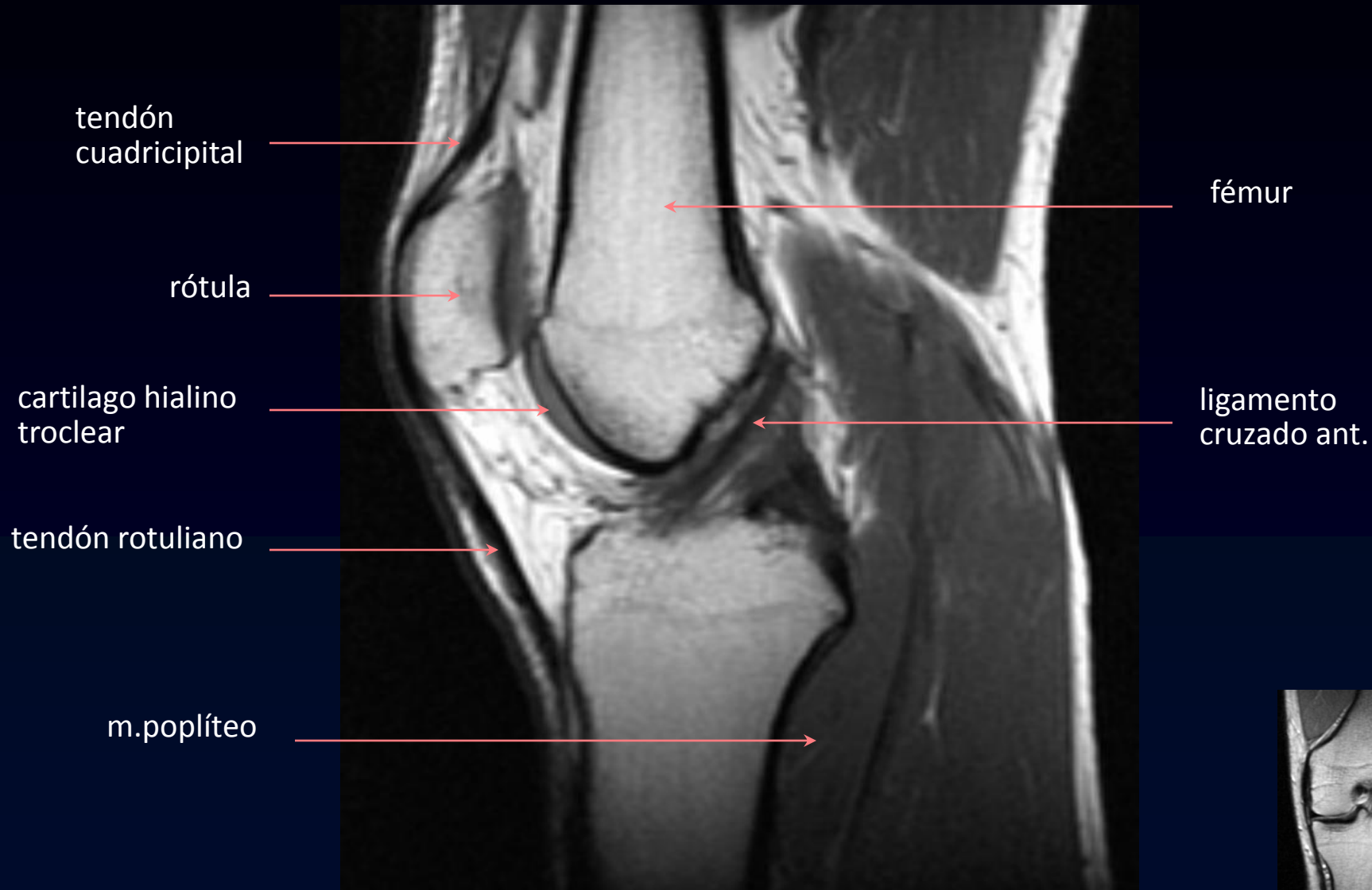
fémur

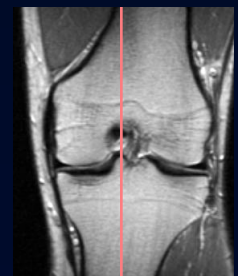
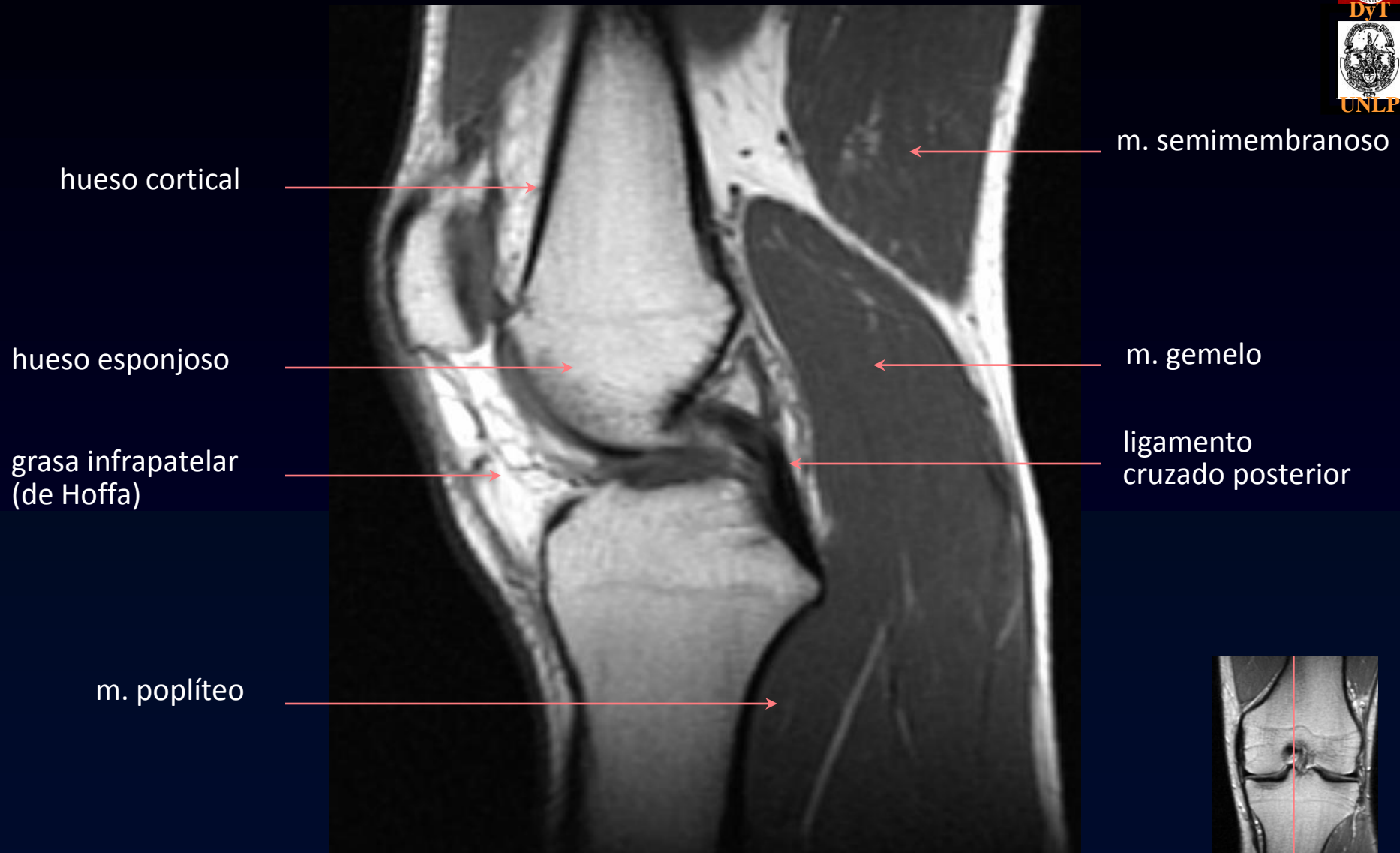
cartilago hialino

cuerno posterior
menisco externo

peroné







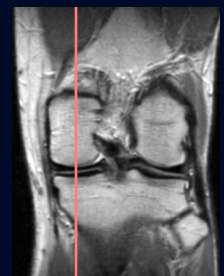
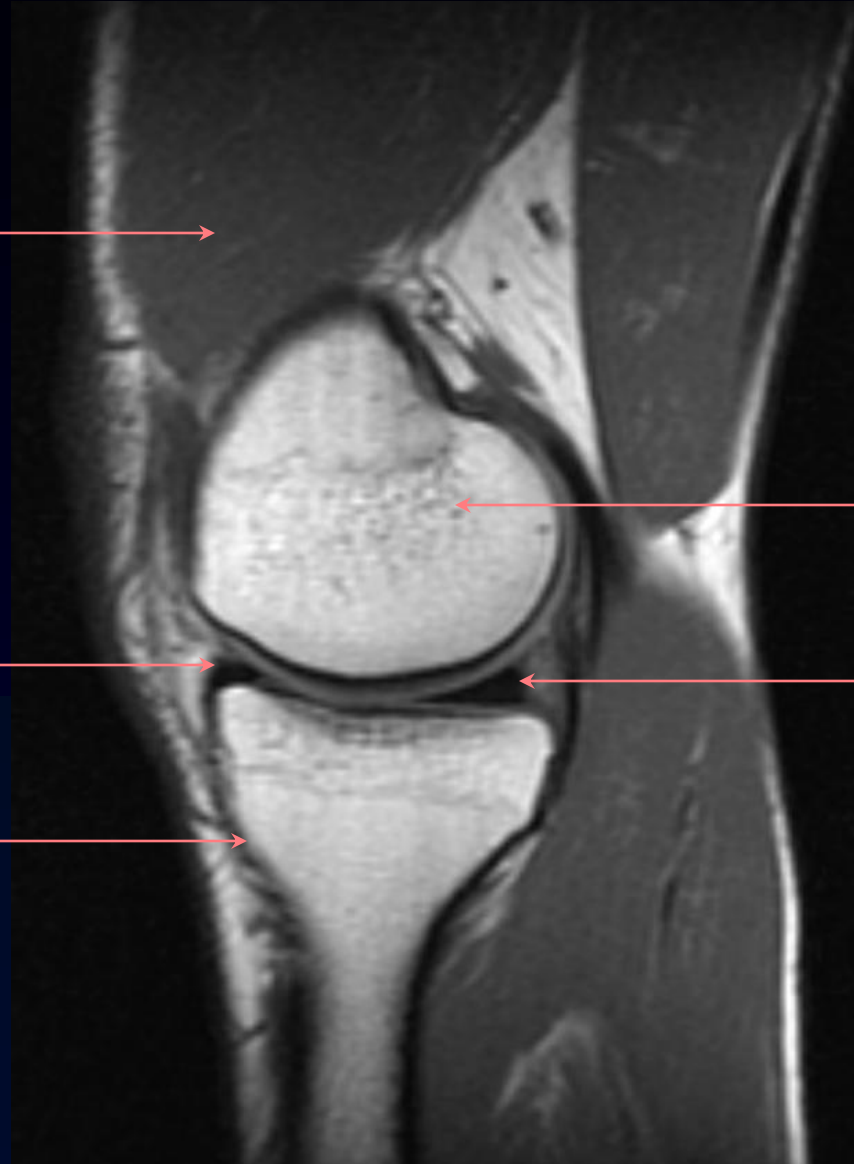
m. vasto interno

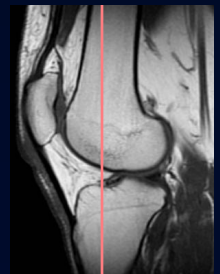
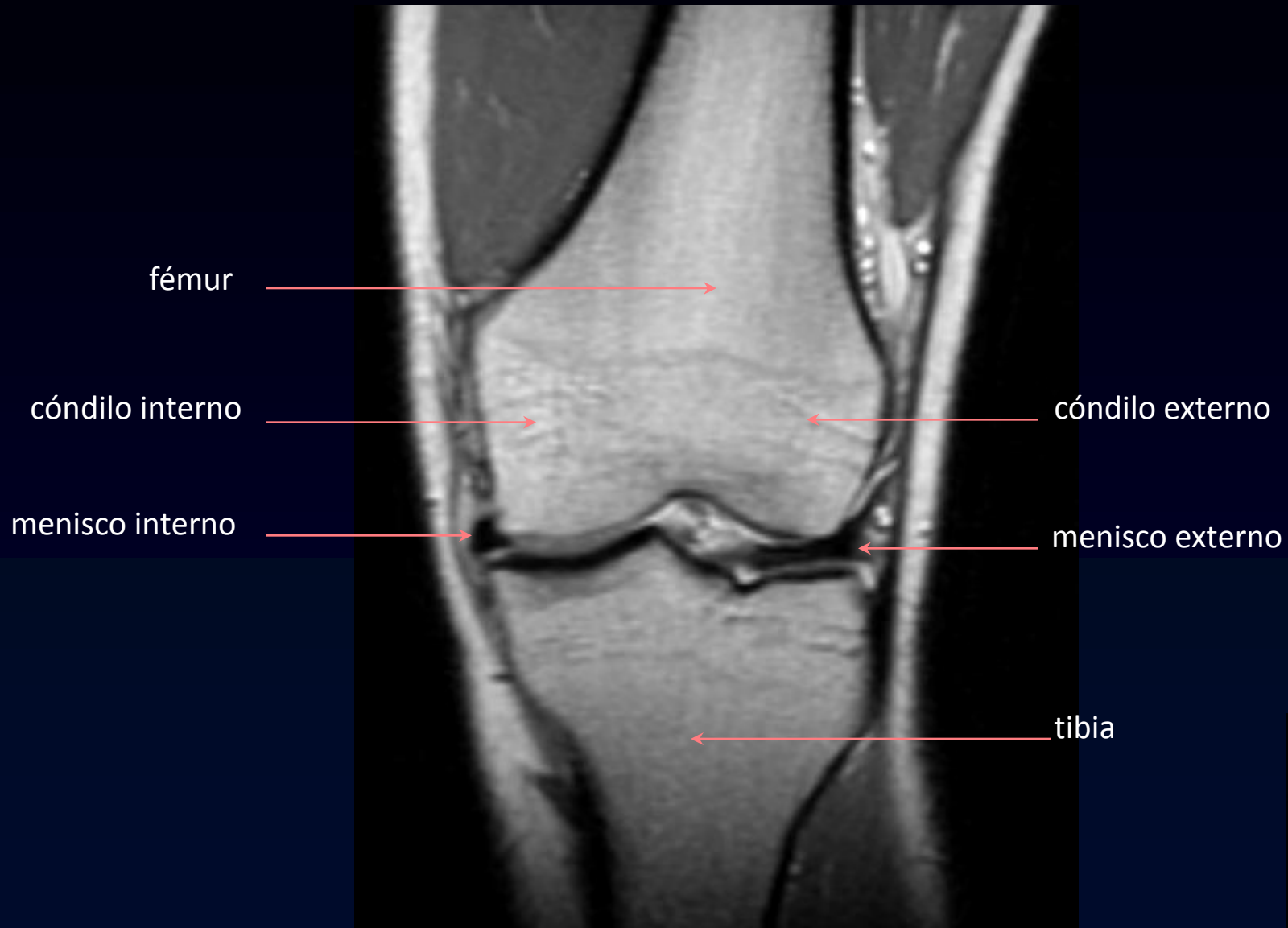
cuerno ant.
menisco interno

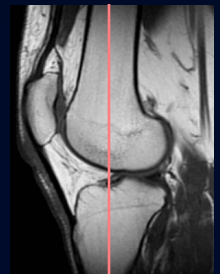
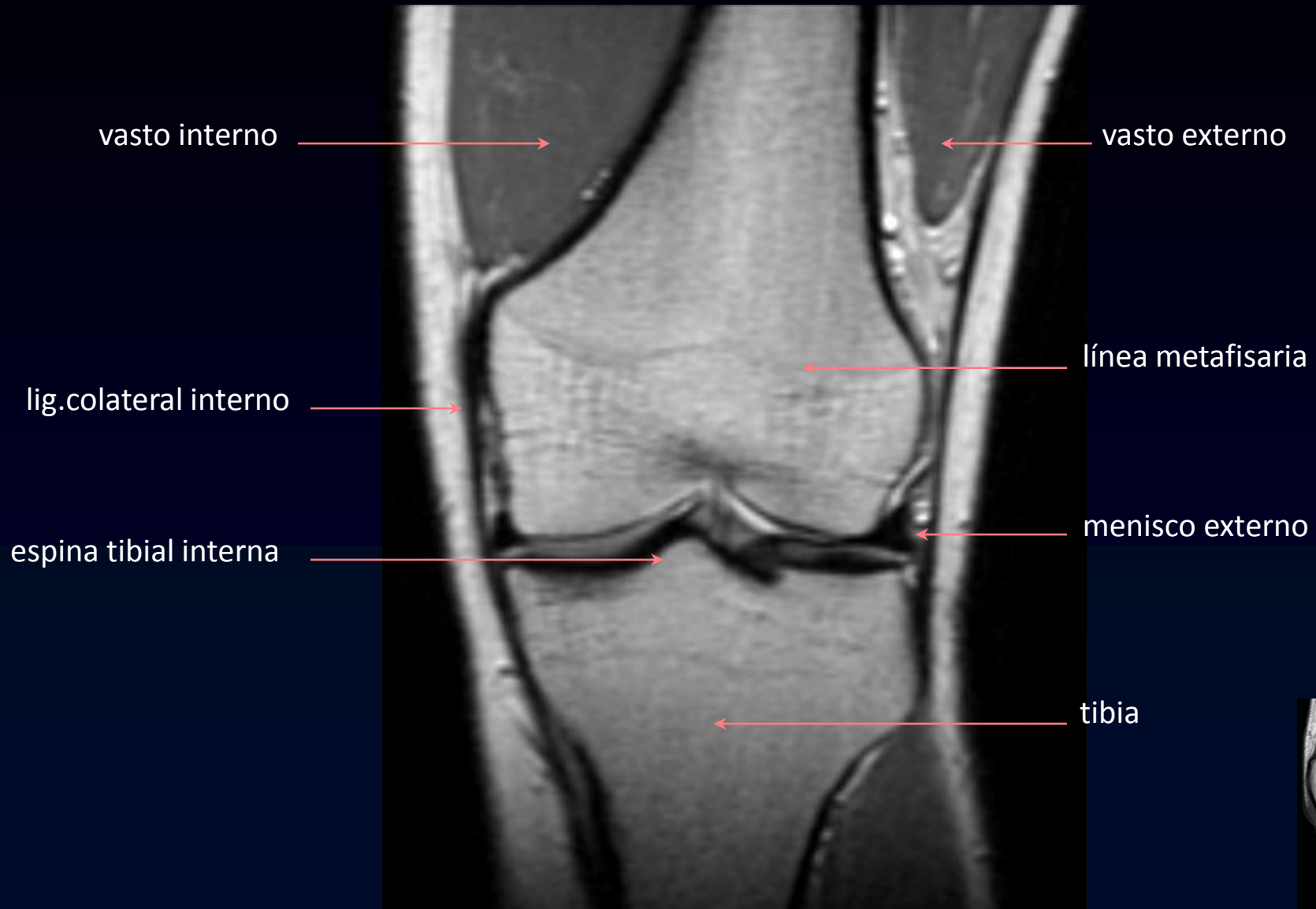
tibia

cóndilo femoral
interno

cuerno post.
menisco interno





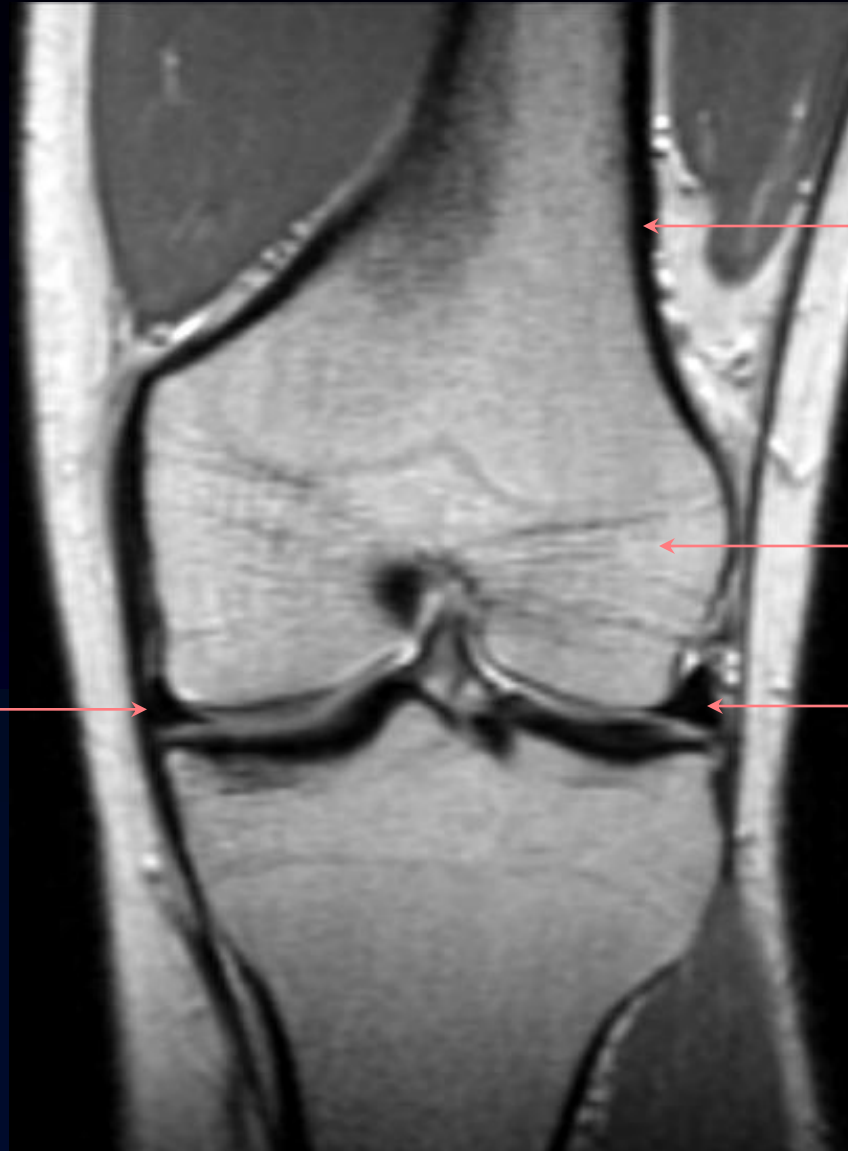


menisco interno

hueso cortical

cóndilo externo

menisco externo



cóndilo interno

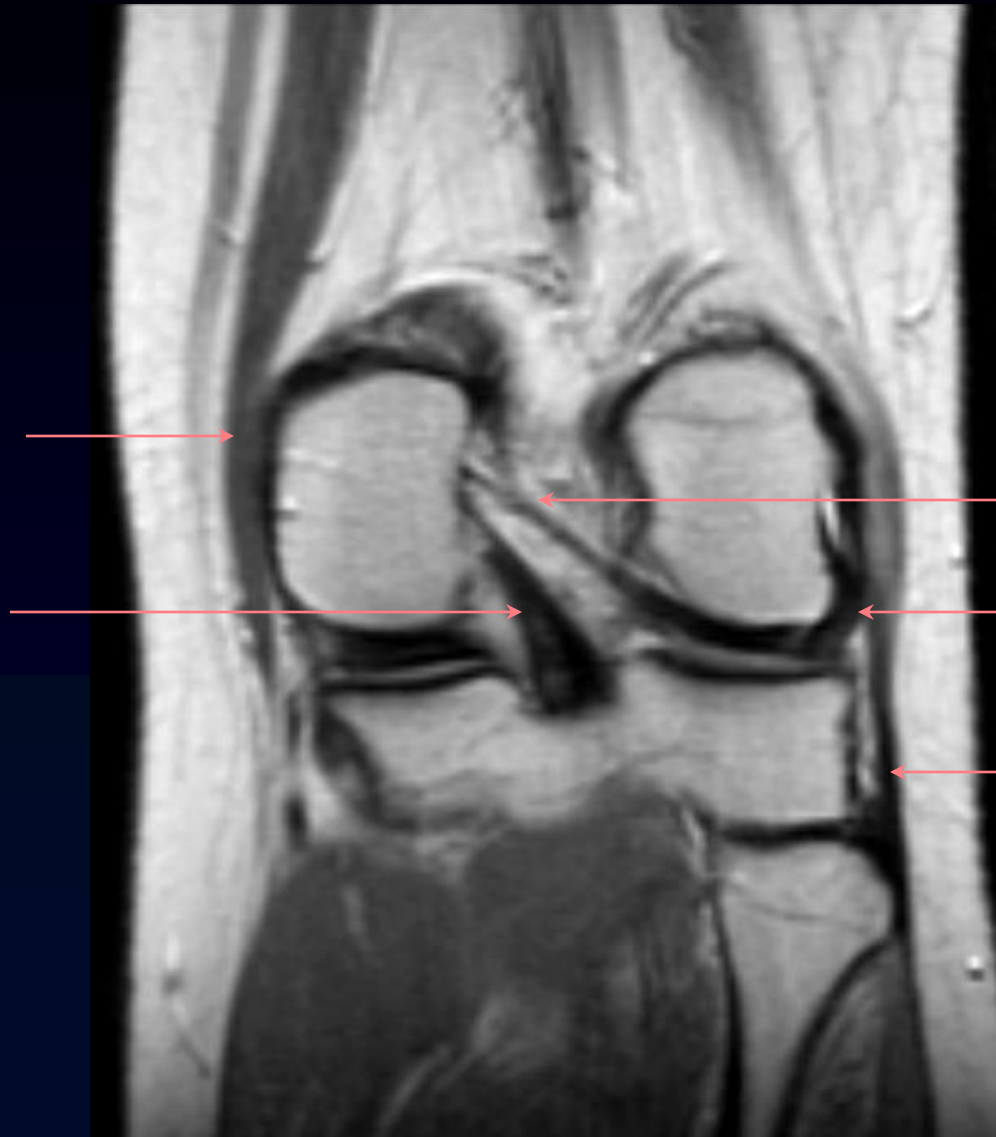
cóndilo externo

lig.cruzado post.

lig.cruzado ant.



ligamento
cruzado posterior

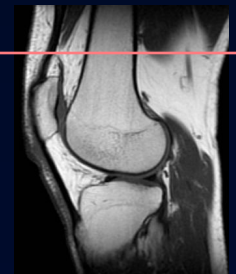
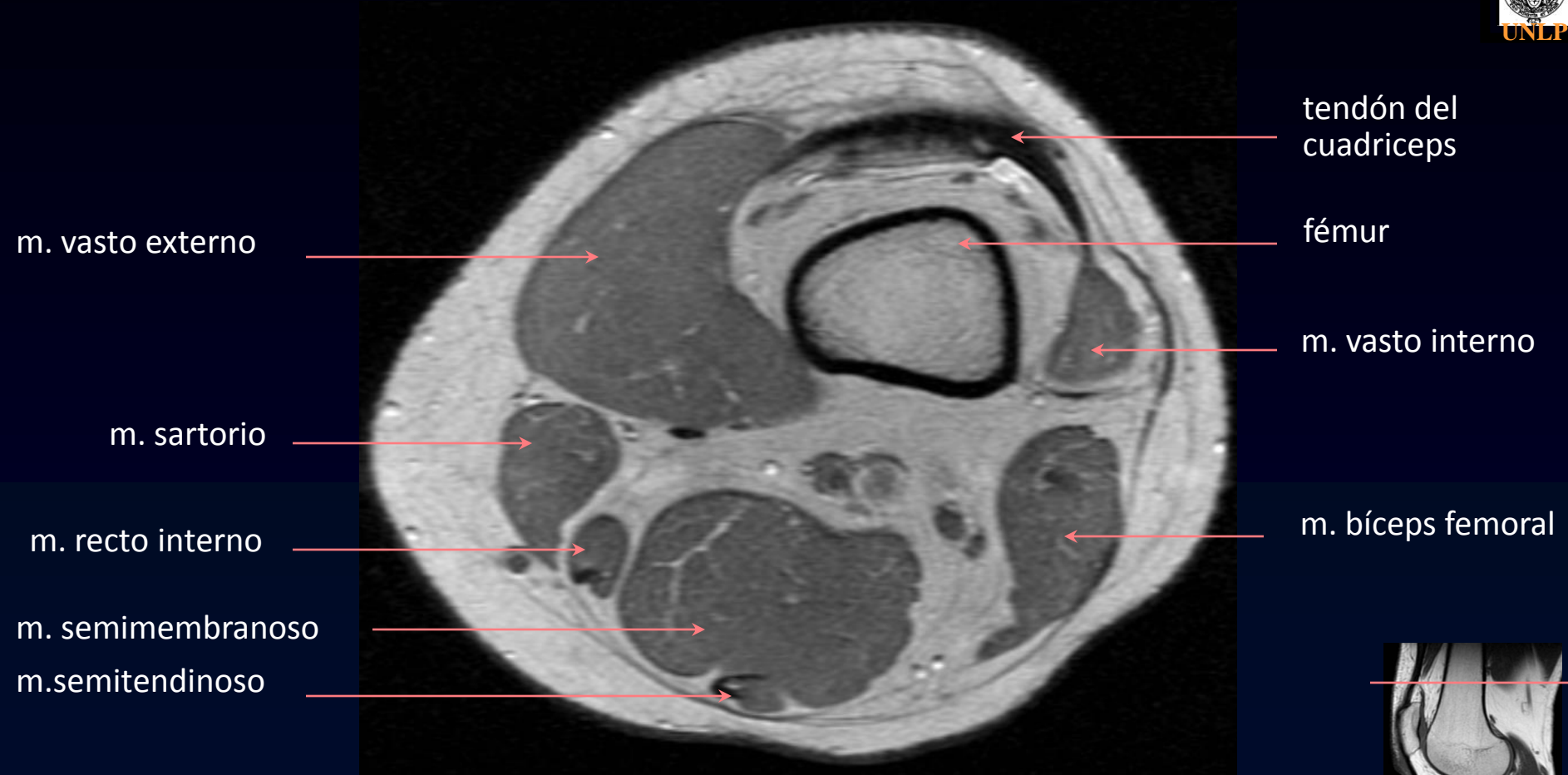


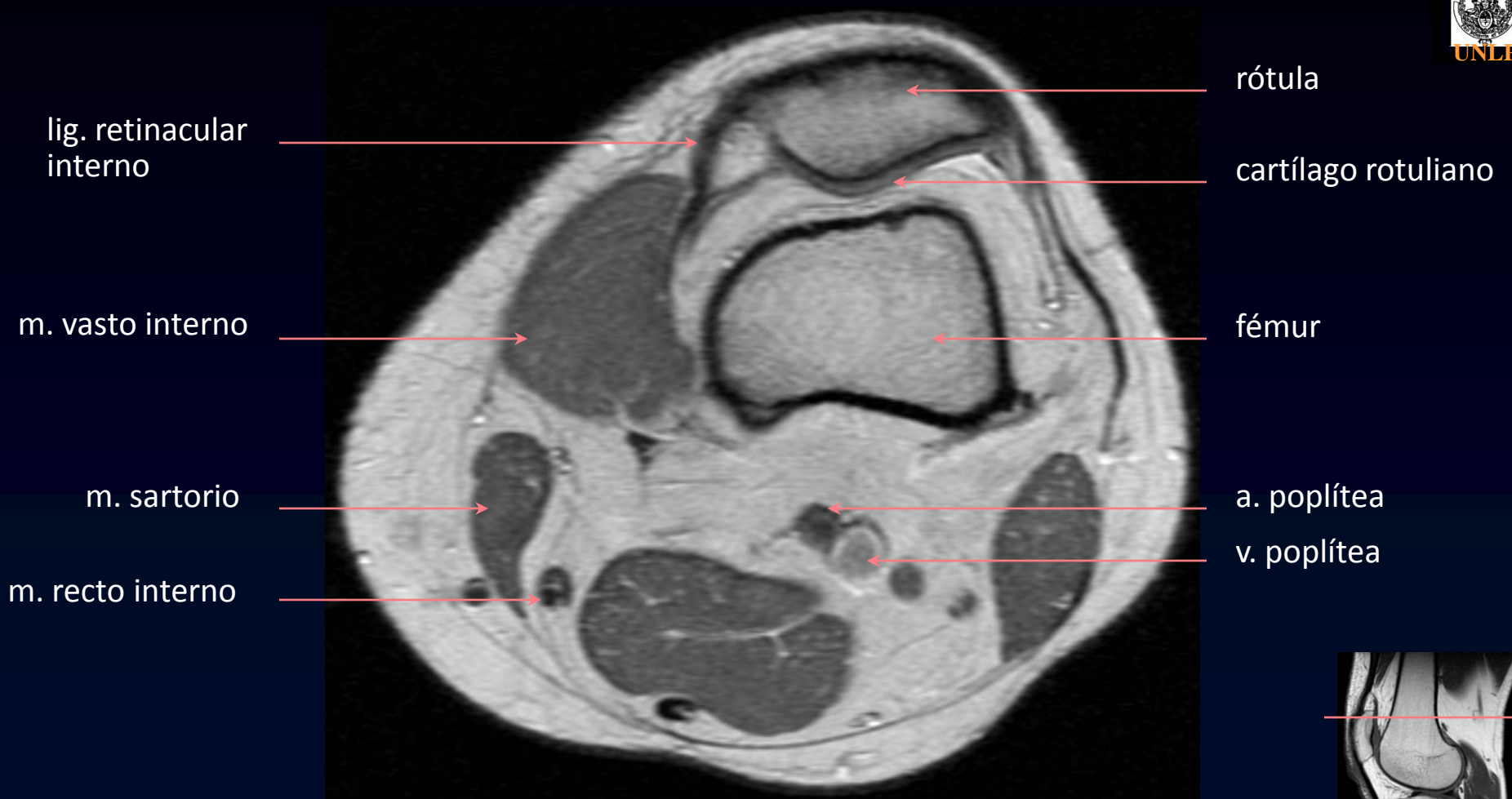
ligamento
menisco-femoral

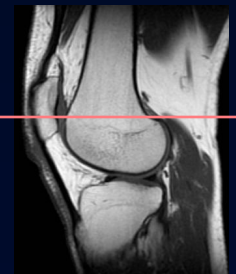
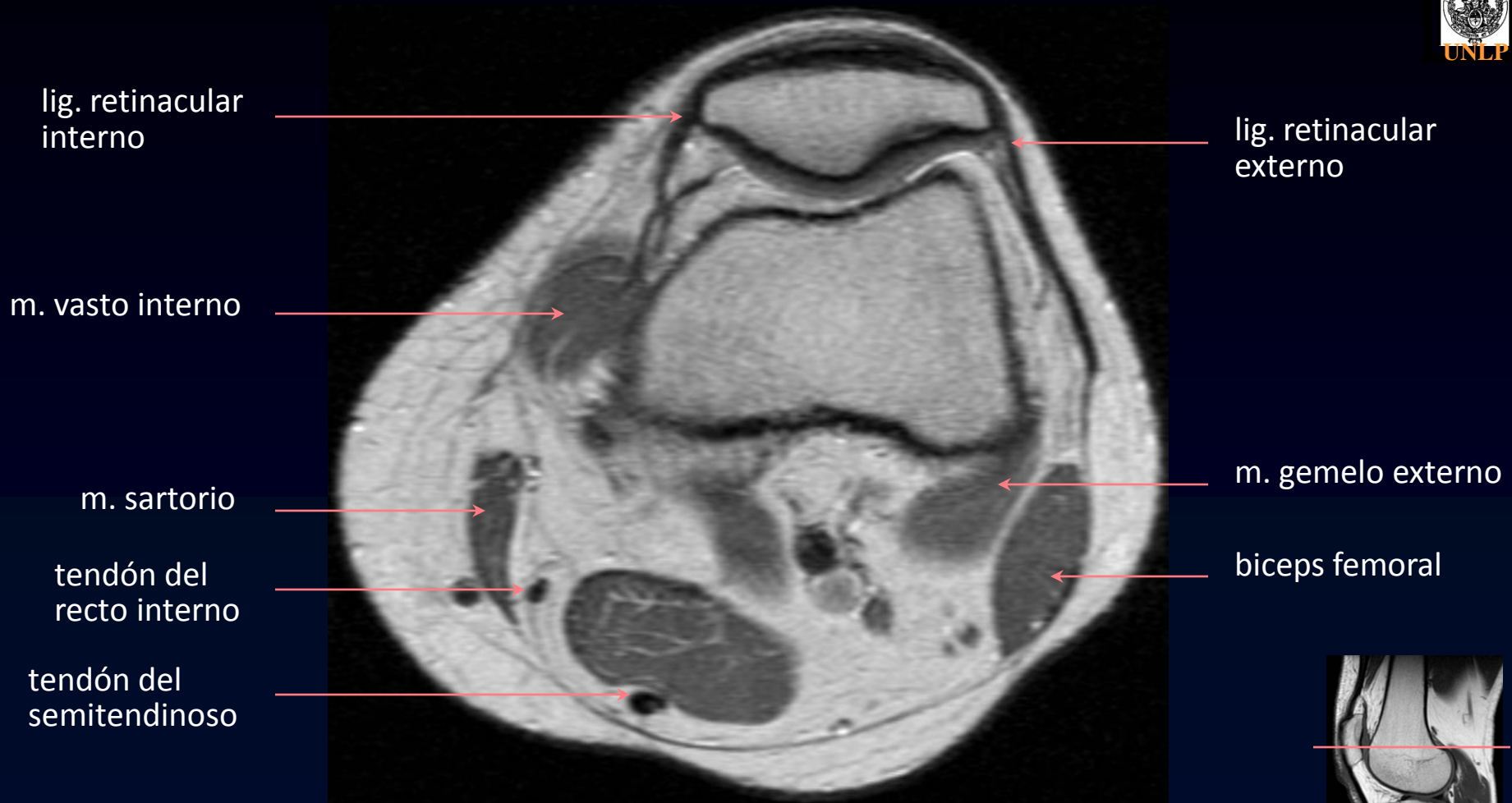
tendón del m. poplíteo

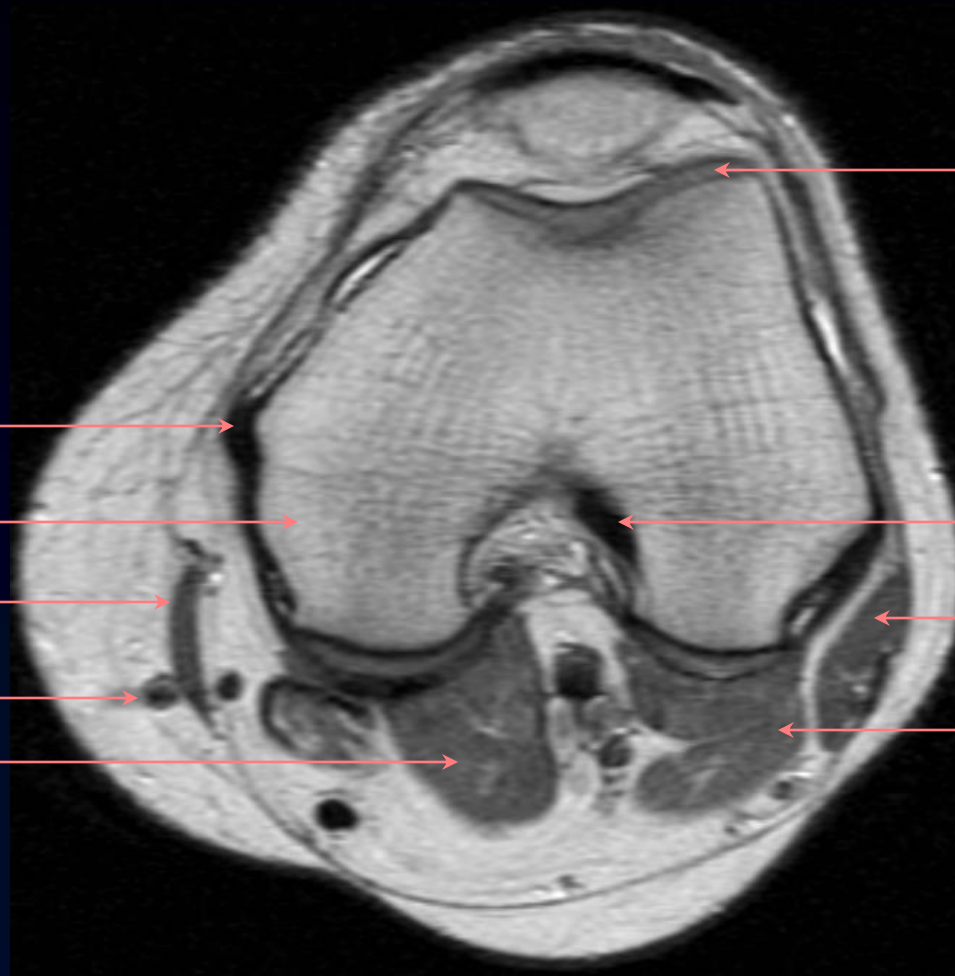
tendón del m. bíceps











cartílago de la
troclea femoral

ligamento lateral
interno

cóndilo interno

m. sartorio

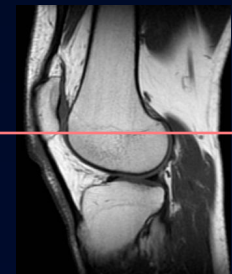
v. safena mayor

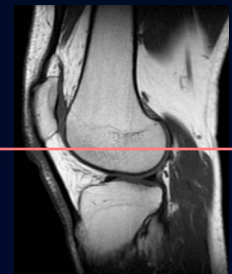
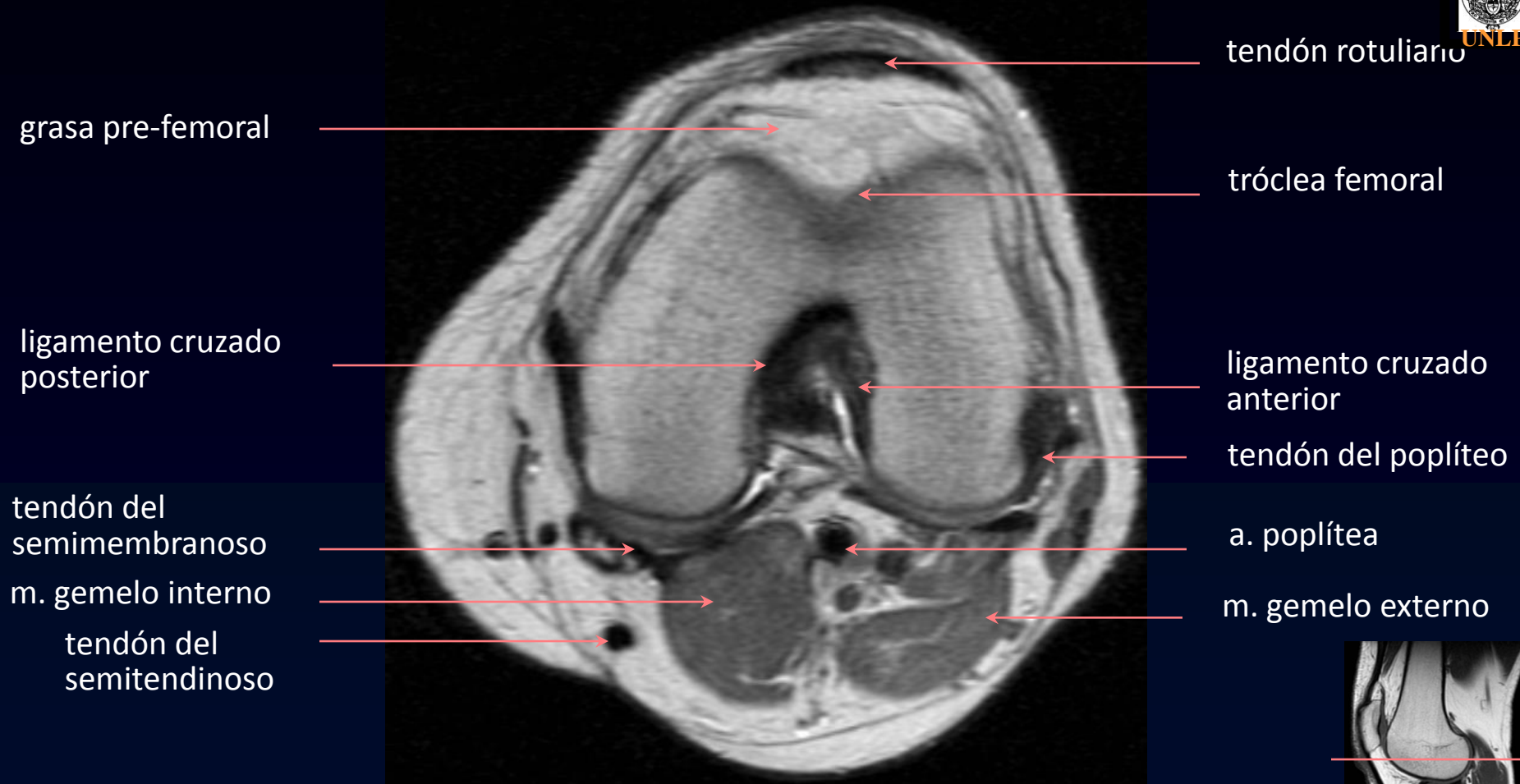
m. gemelo interno

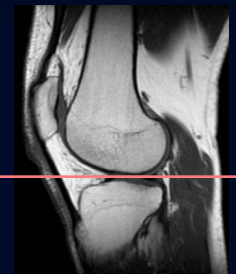
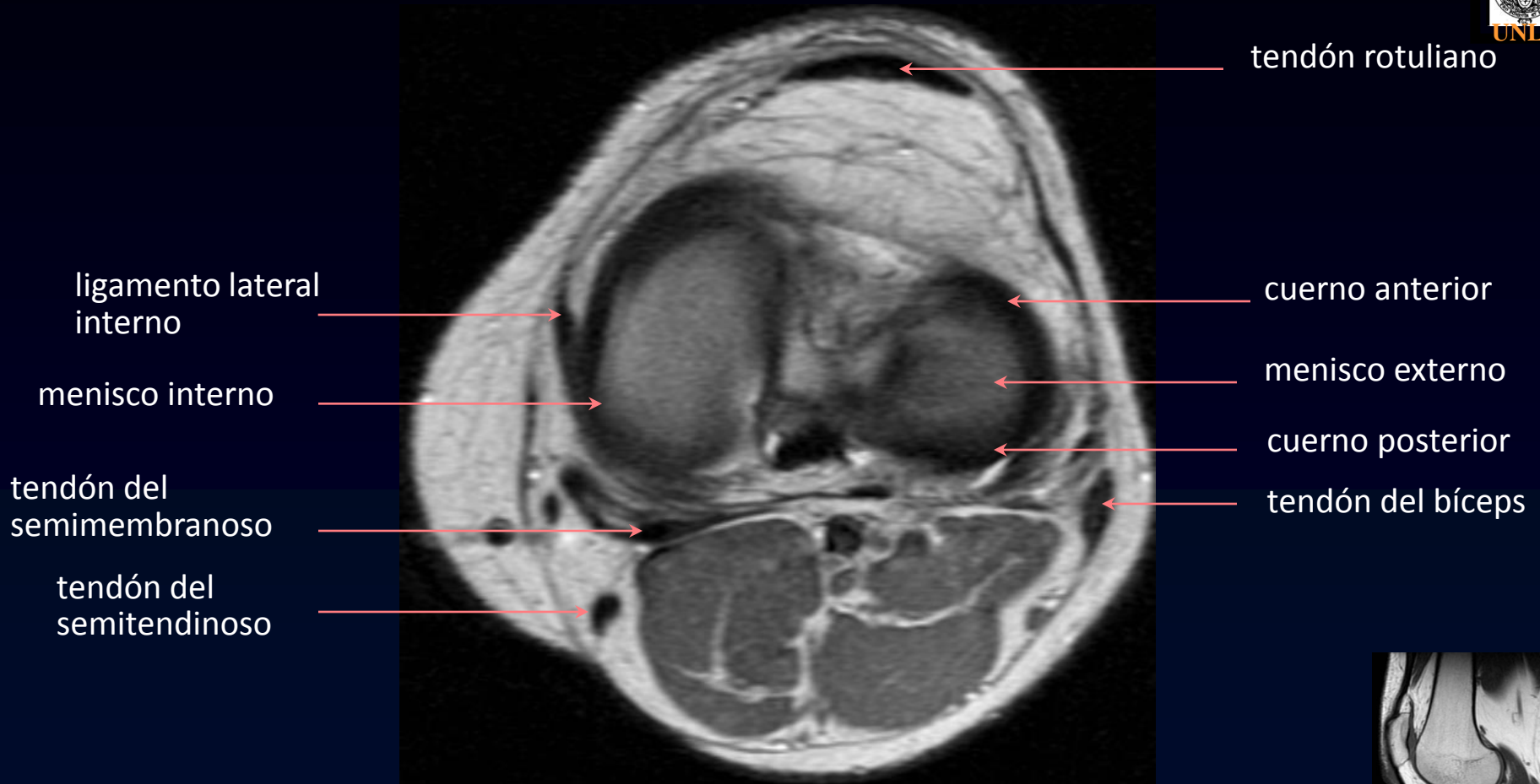
ligamento cruzado
anterior

m. biceps femoral

m. gemelo externo







grasa infrapatelar
(de Hoffa)

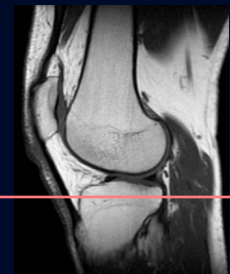
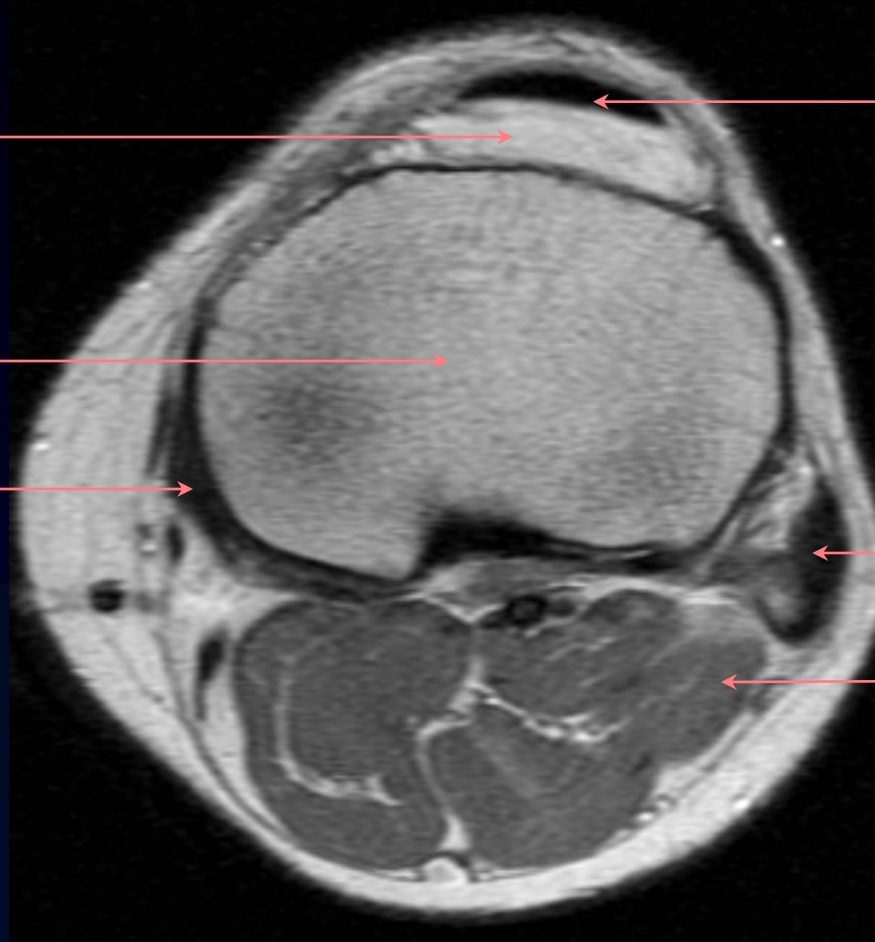
tendón rotuliano

meseta tibial

ligamento lateral
interno

tendón del biceps

m. gemelo externo



tuberosidad tibial
anterior

inserción del
tendón rotuliano

m. tibial anterior

m. peroneo

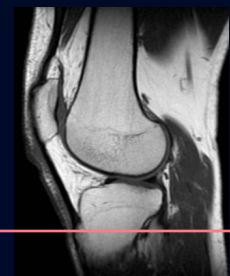
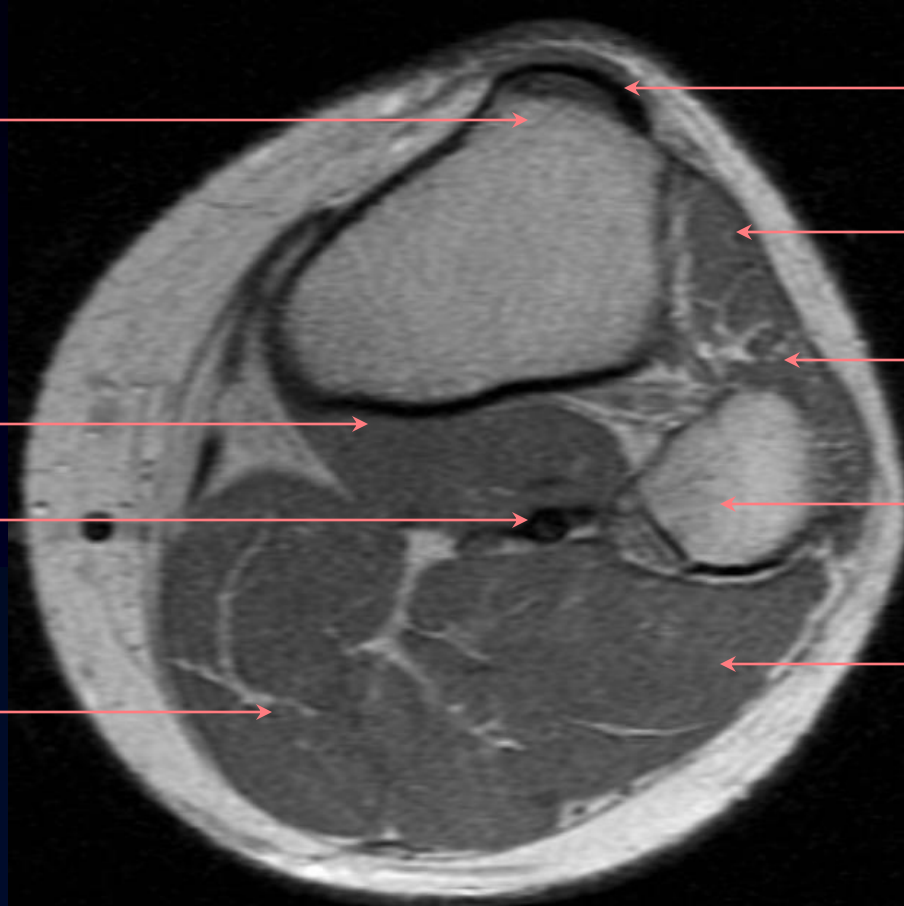
peroné

m. gemelo externo

m. poplíteo

v. poplítea

m. gemelo interno



Cátedra de Diagnóstico y Terapéutica por Imágenes
Facultad de Ciencias Médicas
Universidad Nacional de La Plata

