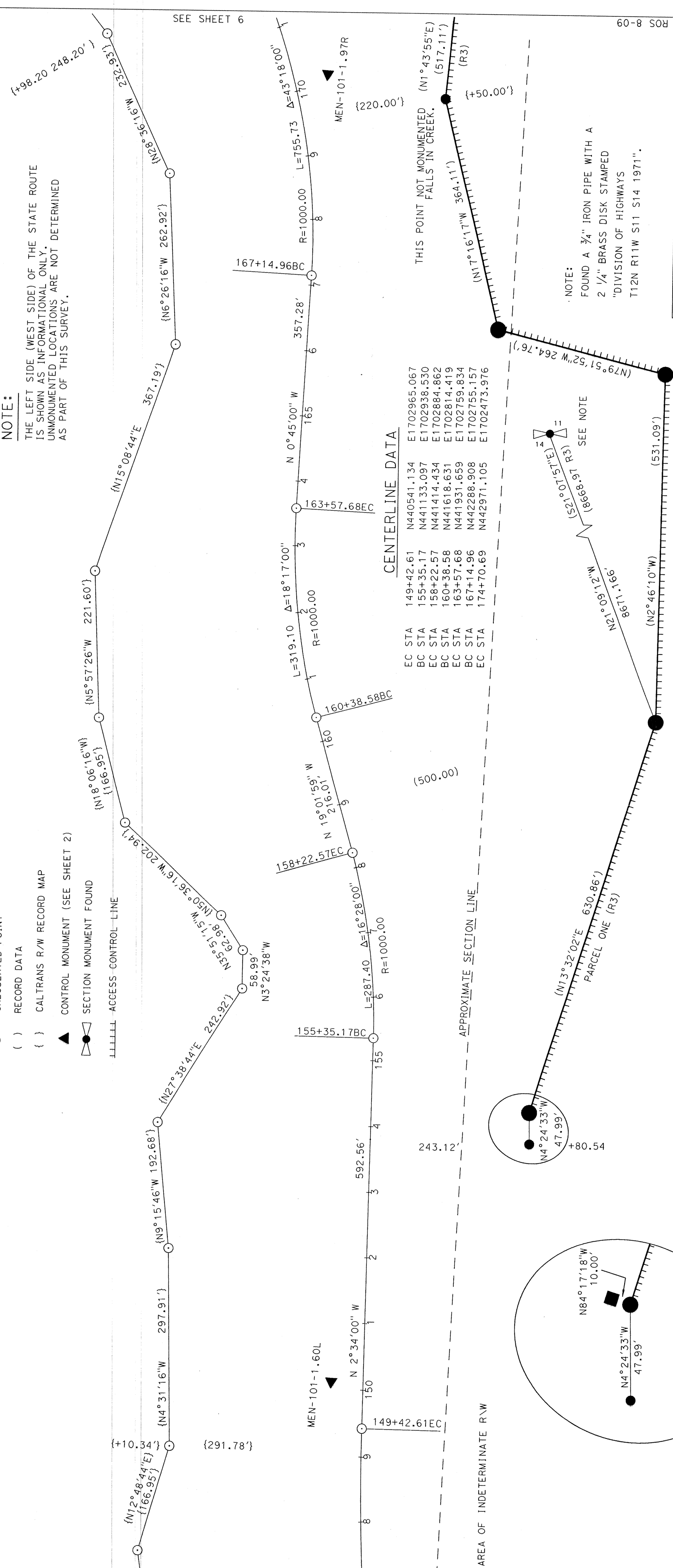


RECORD OF SURVEY
RIGHT OF WAY

LOCATED WITHIN SECTIONS 2, 11, 14, 23, 24, 25, & 26,
TOWNSHIP 12 N., RANGE 11 W., M.D.B. & M AND
MENDOCINO COUNTY, CALIFORNIA

LEGEND

- FOUND 6"x6" CONCRETE MONUMENT
- SET 2 1/4" ALUMINUM CAP "CALTRANS" ON 1" IRON PIPE.
- CALCULATED POINT
- RECORD DATA
- CALTRANS R/W RECORD MAP
- CONTROL MONUMENT (SEE SHEET 2)
- SECTION MONUMENT FOUND
- ACCESS CONTROL LINE



NOTE:

THE LEFT SIDE (WEST SIDE) OF THE STATE ROUTE IS SHOWN AS INFORMATIONAL ONLY. UNMONUMENTED LOCATIONS ARE NOT DETERMINED AS PART OF THIS SURVEY.

CENTERLINE DATA

EC STA	149+42.61	N440541.134	E1702965.067
BC STA	155+35.17	N441133.097	E1702938.530
EC STA	158+22.57	N441414.434	E1702884.862
BC STA	160+38.58	N441618.631	E1702814.419
EC STA	163+57.68	N441931.659	E1702759.834
BC STA	167+14.96	N442288.908	E1702755.157
EC STA	174+70.69	N442971.105	E1702473.976

NOTE:

SECTION AND OTHER LAND LINES ARE DERIVED FROM ASSESSOR'S PARCEL DATA AND ARE PROVIDED FOR GRAPHIC PURPOSES ONLY.

SCALE FACTOR

THE COMBINED GRID FACTOR (CGF) IS USED TO REDUCE GEODETIC DISTANCES TO GROUND DISTANCES. THE CGF AT MEN-101-2.27L IS 0.99990050. MULTIPLY DISTANCES SHOWN BY 1.00009951 TO OBTAIN GROUND DISTANCES.

SCALE FACTOR

THE COMBINED GRID FACTOR (CGF) IS USED TO REDUCE GEODETIC DISTANCES TO GROUND DISTANCES. THE CGF AT MEN-101-2.27L IS 0.99990050. MULTIPLY DISTANCES SHOWN BY 1.00009951 TO OBTAIN GROUND DISTANCES.

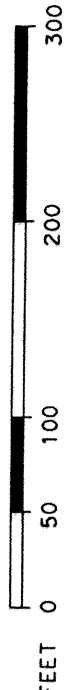


CONVERGENCE ANGLE

-0° 39' 39"

AT MEN-101-2.27L

SCALE 1"=100'



STATE OF CALIFORNIA
BUSINESS, TRANSPORTATION AND HOUSING AGENCY
DEPARTMENT OF TRANSPORTATION
DISTRICT 1
RIGHT OF WAY ENGINEERING

RECORD OF SURVEY
RIGHT OF WAY

ALONG STATE ROUTE 101
IN THE UNINCORPORATED
AREA OF MENDOCINO COUNTY
BETWEEN THE SONOMA COUNTY LINE
AND HOPLAND

CO.	DIST.	RTE.	PM	SHEET NUMBER
MEN	01	101	0.4/4.9	5 OF 12

MAPS	
DRAWER	78
PAGE	18

#042