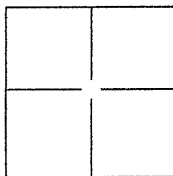


CORNER RECORD

Document Number CR 5479
 City of BERKELEY County of ALAMEDA, California
 Brief Legal Description CITY OF BERKELEY MONUMENT B2196



CORNER TYPE

Government Corner ☐ Control ☒
 Meander ☐ Property ☐
 Rancho ☐ Other ☐

Date of Survey 4/3/2013

COORDINATES(Optional)

N. _____
 E. _____
 Zone _____ NAD27 ☐ NAD83 ☐
 NAD83 Epoch _____
 Elev. _____
 Vert. Datum: NGVD29 ☐ NADV88 ☐
 Meas. Units: Metric ☐ Imperial ☐

Corner - Left as found ☒ Found and tagged ☐ Established ☐ Reestablished ☐ Rebuilt ☐

Identification and type of corner found: Evidence used to identify or procedure used to establish or reestablish the corner:

FOUND MONUMENTS PER CITY MONUMENT RECORDS.

A description of the physical condition of the monument as found and as set or reset:

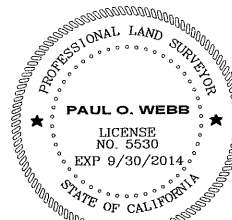
FOUND MONUMENTS IN GOOD CONDITION
SET 3 CUT CROSSES IN SIDEWALK, AND
ONE CUT CROSS IN CONCRETE CURB AS
REFERENCE POINTS.

SURVEYOR'S STATEMENT

This Corner Record was prepared by me or under my direction in conformance with

the Land Surveyor's Act on APRIL 18, 2013.

Signed Paul O. Webb (P.L.S.) or R.C.E. No.: 5530



COUNTY SURVEYOR'S STATEMENT

This Corner Record was received 4-14-13 and examined

and filed 6-17-2013

Signed Russell R. Penland P.L.S. or R.C.E. No.: 5726

Title COUNTY SURVEYOR

County Surveyor's Comment _____

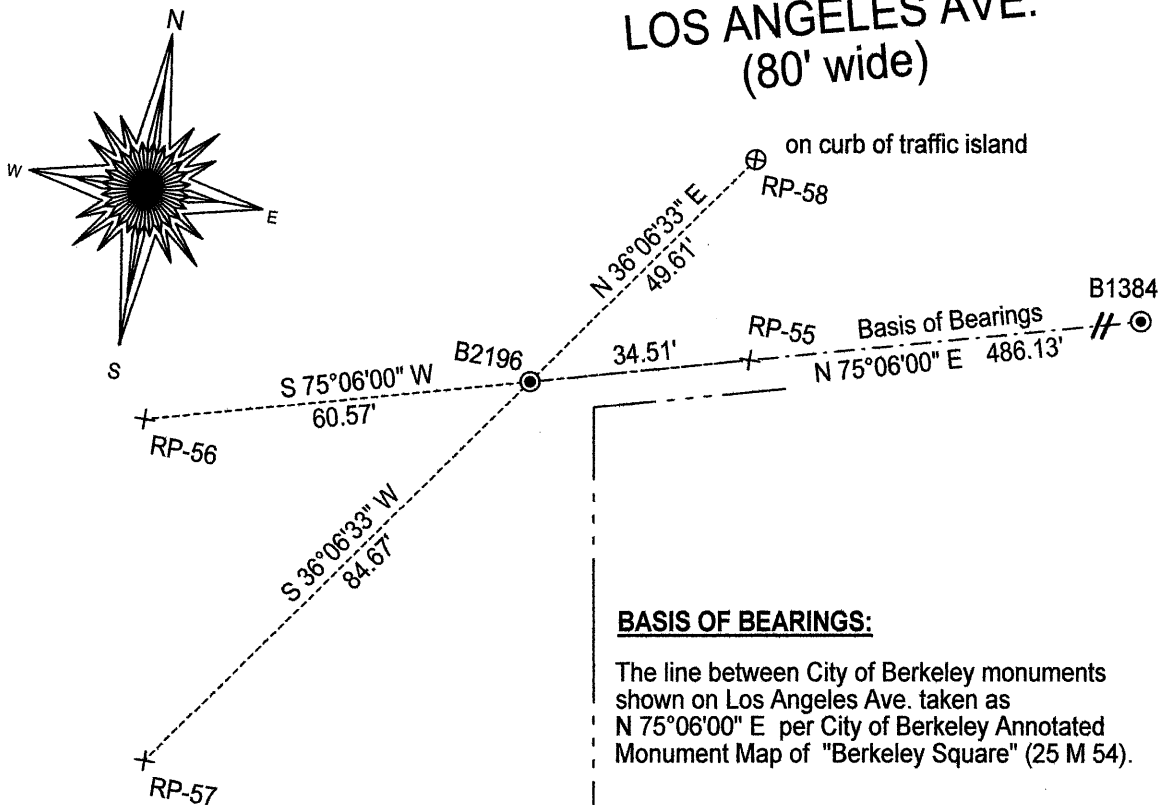


GW76Y7

CITY OF BERKELEY
MONUMENT B2196

THE ALAMEDA
(100' wide)

LOS ANGELES AVE.
(80' wide)



BASIS OF BEARINGS:

The line between City of Berkeley monuments shown on Los Angeles Ave. taken as N 75°06'00" E per City of Berkeley Annotated Monument Map of "Berkeley Square" (25 M 54).

LEGEND:

- ⊙ found City of Berkeley monument in well
- + set cut cross in sidewalk
- ⊗ set cut cross on curb

SCALE: 1 INCH = 30 FEET

