

ROOF PLAN - HVAC

SCALE 1/4" = 1' - 0" WHEN PLOTTED 36" X 24"

- NOTES:
- BANDING MATERIAL, 3/4" WIDE, MINIMUM 0.015" THICK, CARBON STEEL FOR CONSTRUCTION REQUIREMENTS OF ZERO CLEARANCE TO COMBUSTIBLES OR 1 HR. RATINGS. STAINLESS STEEL BANDING IS USED FOR 2 HR. REQUIREMENTS.
 - 3M FIRE BARRIER DUCT WRAP 615+, 1-1/2" THICK, 24" OR 48" WIDE, 300' STANDARD LENGTH (2 LAYERS) 6 LBS PER CUBIC FT TO BE UTILIZED.
 - HOLD INTERIOR WRAP OF INSULATION USING 1" WIDE FILAMENT TAPE (NO. 898) MANUFACTURED BY 3M COMPANY.
 - SEAL CUT EDGES OF BLANKET WITH ALUMINUM FOIL TAPE.

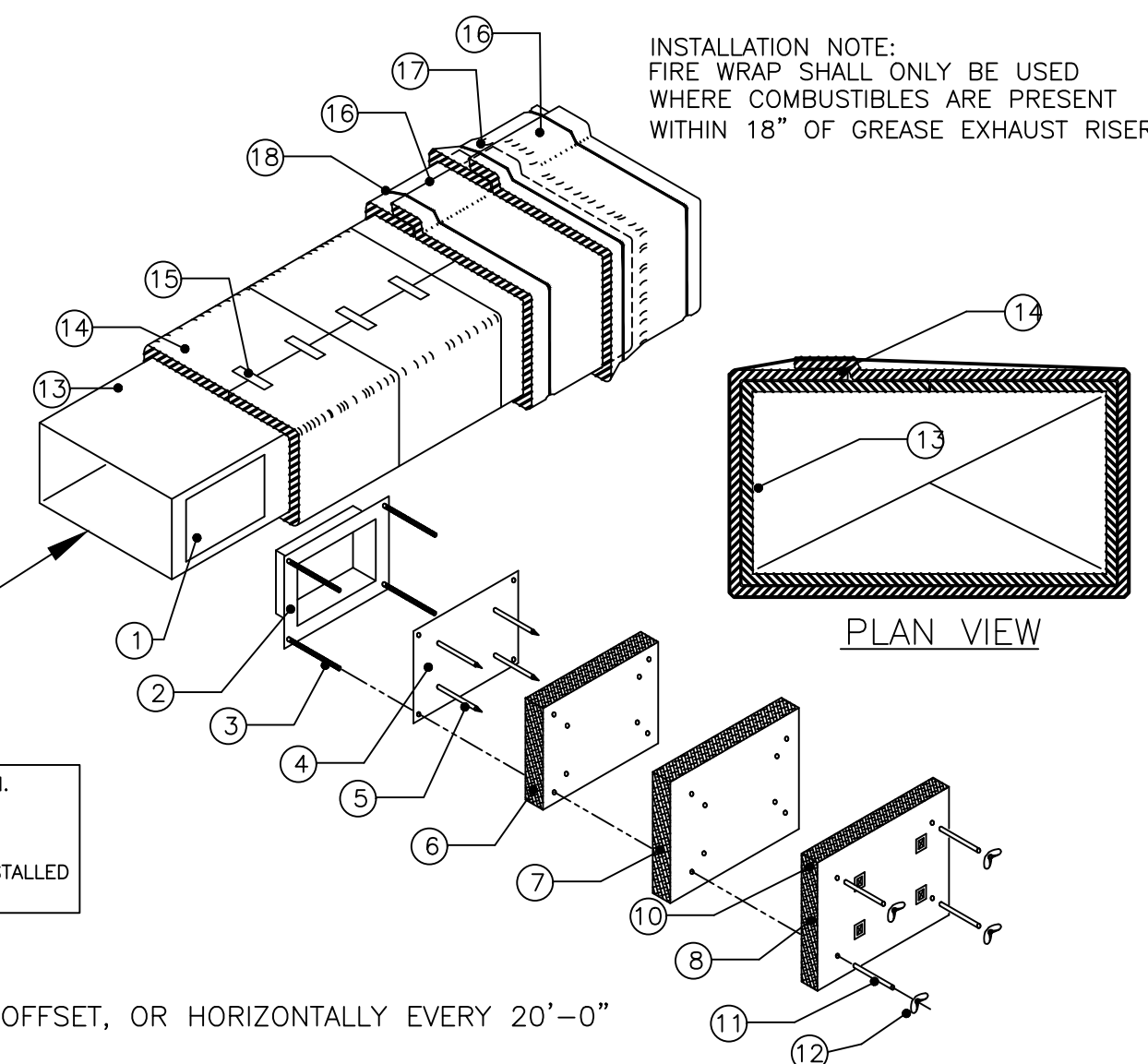
LEGEND	
1	DOOR HOLE
2	ACCESS FRAME WELDED TO DUCT
3	1/4" DIA. ALL THREAD RODS
4	ACCESS COVER, 16 GA.
5	INSULATION PINS, WELDED
6	1 3M FIRE BARRIER 615 PLUS
7	1 3M FIRE BARRIER 615 PLUS 1" OVERLAP
8	1 3M FIRE BARRIER 615 PLUS 1" OVERLAP
9	SPEED CLIPS
10	ALUMINUM TAPE EDGES
11	SPOOL PIECES FOR THREADED RODS
12	1/4" DIA. WING NUTS
13	16 GA. SHEET METAL DUCT (FULLY WELDED WATER TIGHT)
14	1ST LAYER 3M FIRE BARRIER DUCT WRAP 615 PLUS LONGITUDINAL JOINT BUTT OR MIN. 3" OVERLAP ON INNER LAYER, MIN. 3" OVERLAP ON OUTER LAYER
15	3/4" (19mm) WIDE FILAMENT TAPE
16	2ND LAYER 3M FIRE BARRIER DUCT WRAP 615 PLUS OR APPROVED EQUIVALENT
17	3" MINIMUM PERIMETER OVERLAP - TYP.
18	STEEL BANDING 1/2" WIDE MIN. TYP. FOR PERMANENT FASTENING

FULLY WELDED GREASE RATED EXHAUST DUCT. SEE SIZE ON PLAN. RISER SHALL BE LIGHT INSPECTED LAYING ON FLOOR. FULLY PREPARE FOR SCHEDULED INSPECTION. HVAC CONTRACTOR SHALL VERIFY TEST PRIOR TO SCHEDULE. THE USE OF U.L. LISTED PREFABED DUCT BY CAPTIVE AIRE. INSTALLED CORRECTLY MAY BE EXEMPT FROM LIGHT INSPECTION IF USED.

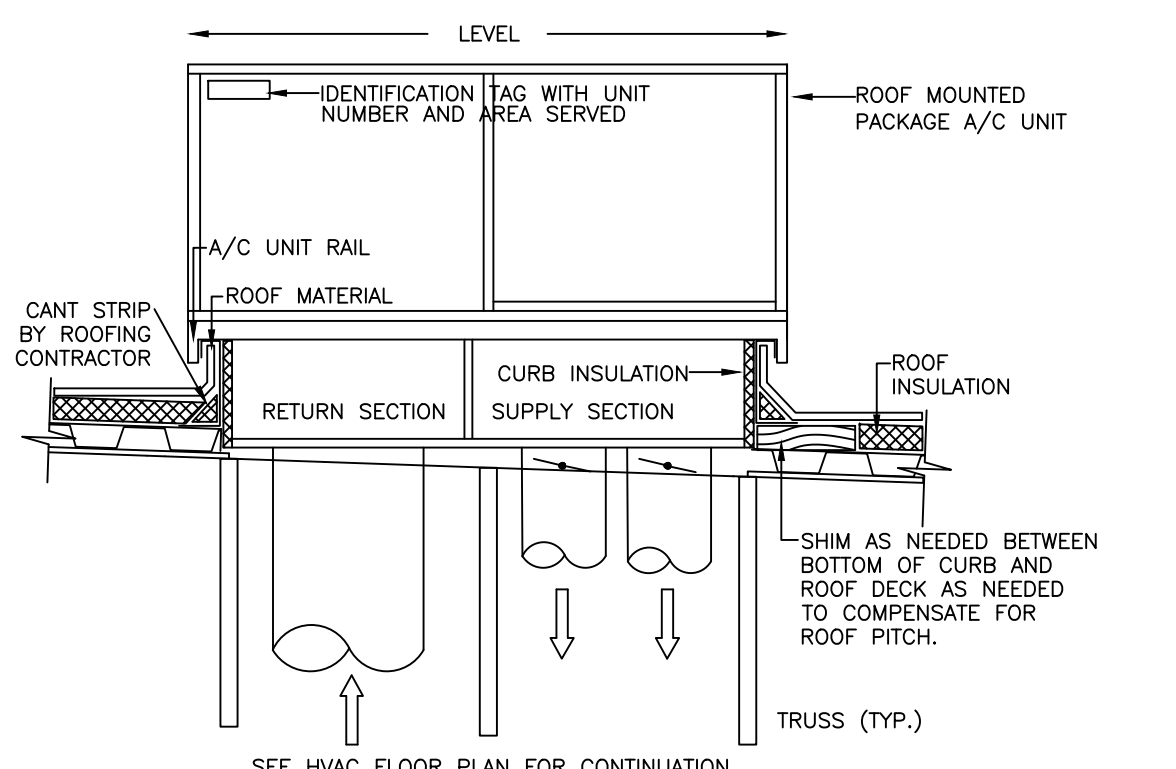
NOTE: ACCESS DOOR NOT REQUIRED UNLESS OFFSET, OR HORIZONTALLY EVERY 20'-0"

1 HR. FIRE WRAP ("0" CLEARANCE) TO COMUSTIBLES - INSTALLATION DETAIL

NOT TO SCALE



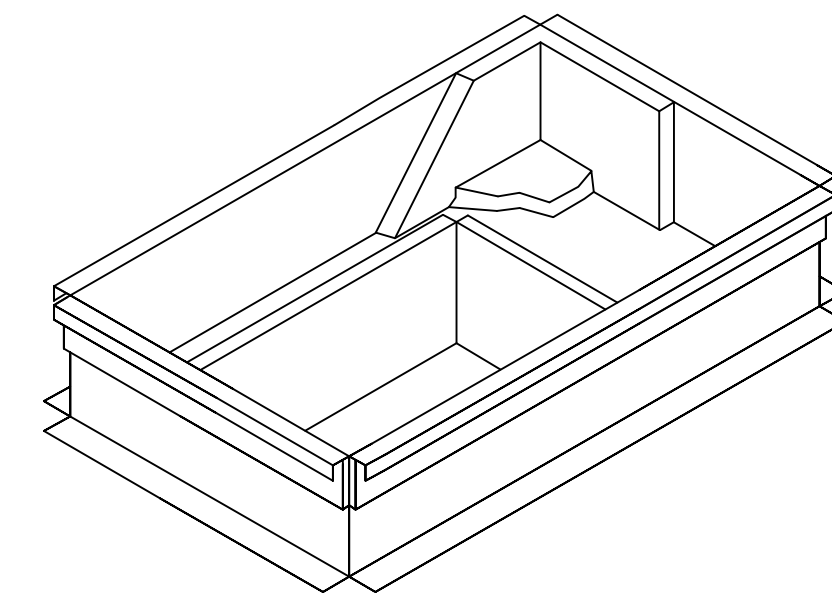
INSTALLATION NOTE:
FIRE WRAP SHALL ONLY BE USED WHERE COMBUSTIBLES ARE PRESENT WITHIN 18" OF GREASE EXHAUST RISER.



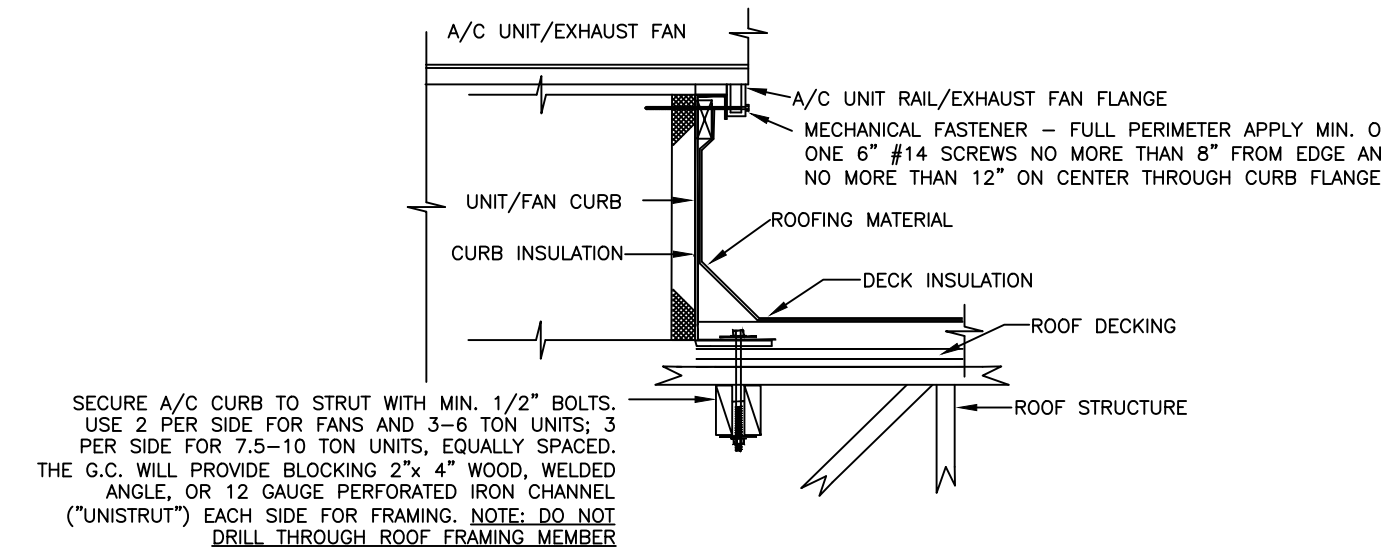
DUCT RISER/LEVELING DETAIL

NOT TO SCALE

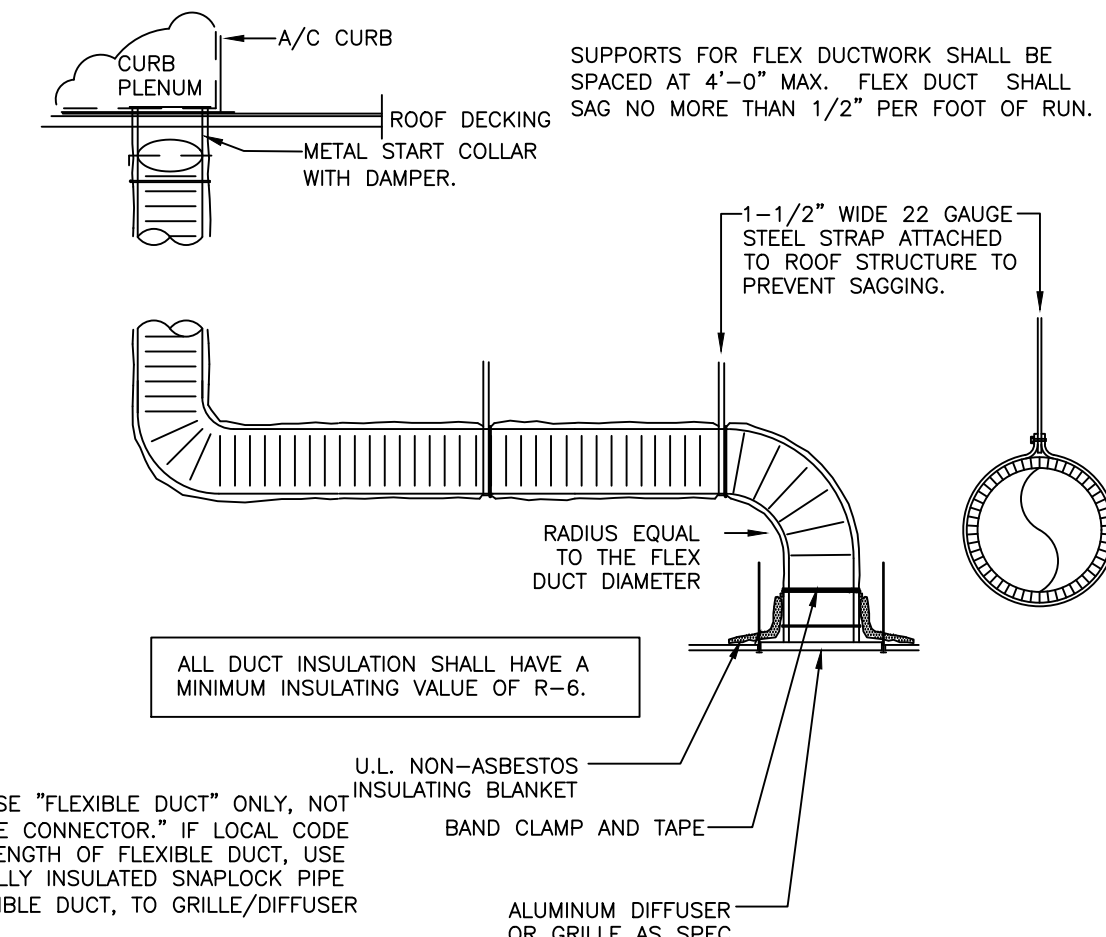
NOTE: INSULATE ALL COLLARS. SEAL TO PLENUM AND FLEX INSULATION



FACTORY CURB CONVERSION SHALL NOT BE ACCEPTED.
NCA PLENUMIZED AC CURB DETAIL
NOT TO SCALE



ACCEPTABLE FOR 140 MPH ZONE
ROOF EQUIP. CURB MOUNTING DETAIL
NOT TO SCALE



DUCT SCHEDULE	
SIZE	GAUGE
6" - 8"	28
10" - 12"	26
14" - 16"	24
18" - 20"	22

NOTE: USE "FLEXIBLE DUCT" ONLY, NOT "FLEXIBLE CONNECTOR." IF LOCAL CODE LIMITS LENGTH OF FLEXIBLE DUCT, USE EXTERNALLY INSULATED SNAPLOCK PIPE TO FLEXIBLE DUCT, TO GRILLE/DIFFUSER

U.L. NON-ASBESTOS INSULATING BLANKET BAND CLAMP AND TAPE

ALUMINUM DIFFUSER OR GRILLE AS SPEC.

NOTE: SUPPORT DUCTWORK WITH 1-1/2" WIDE 22 GAUGE STEEL STRAPS FIRMLY ATTACHED TO THE BUILDING STRUCTURE. SPACING SHALL BE MAXIMUM 10'-0" FOR RIGID DUCTWORK, AND MINIMUM 4'-0" FOR FLEXIBLE DUCTWORK. 12 GAUGE WIRE MAY BE SUBSTITUTED FOR STRAPS IF 1-1/2" WIDE 22 GAUGE STEEL SADDLES ARE USED TO FULLY ENGIRCLE DUCT. REFER TO THE HVAC DUCT CONSTRUCTION STANDARDS PUBLISHED BY SMACNA FOR ADDITIONAL DETAILS. FULLY COMPLY WITH MECHANICAL CODES.

RIGID/FLEXDUCT CONNECTION/INSTALL DETAIL

NOT TO SCALE

© Copyright 2018- Drawings, specifications, notes, database, computer files, field data, and reports as instruments of service prepared by the Design of Record. As instruments of services, these items remain the property of the Design of Record, who shall retain all statutory and other reserved rights, including the copyright thereto. Any use, reproduction or changes to these documents without written consent of NCA Consultants is a violation of federal copyright laws.