

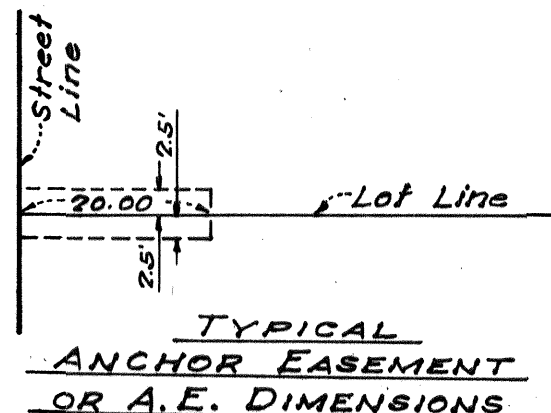


LEGEND:

- Concrete monuments to be set shown thus: 
- Existing monuments shown thus: 
- Basis of Bearings: Tract 1468.
- Building set-back lines to be as required by the zoning ordinance of the City of Fremont.
- Anchor Easement designated A.E.
- Public Utility Easement designated P.U.E.



TRACT 2066
DAVIS MEADOWS
UNIT NO. 13
CITY OF FREMONT
ALAMEDA COUNTY, CALIFORNIA
CHARLES H. PESTANA
REGISTERED CIVIL ENGINEER NO. 8395
JUNE, 1959
SCALE: 1"=50'

