

CONSISTING OF THREE SHEETS AND BEING ALL OF PARCEL 1 AS DESCRIBED ON THAT GRANT DEED RECORDED IN BOOK K965 OFFICIAL RECORDS, AT PAGE 421 AND ALL OF THAT CERTAIN 4.98 ACRE PARCEL AS SHOWN ON THE RECORD OF SURVEY, RECORDED IN BOOK 262 OF MAPS, AT PAGE 13, SANTA CLARA COUNTY RECORDS.

**APRIL, 1994**

**CUPERTINO, CA.**

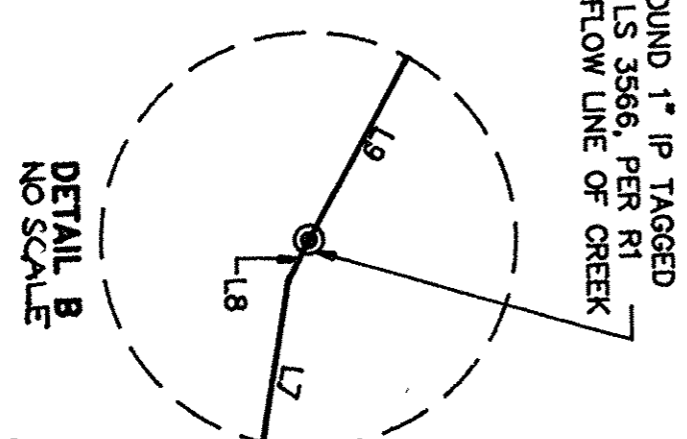
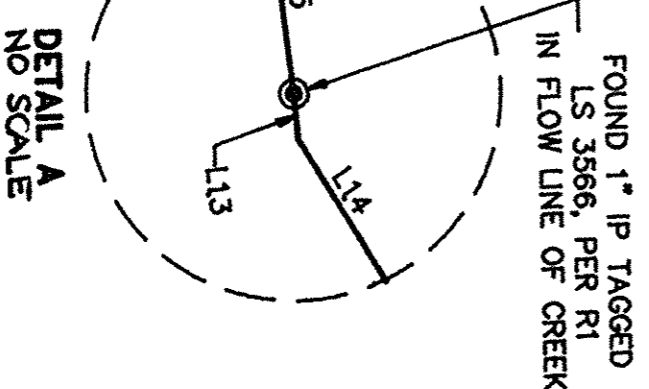
- R-1 RECORD OF SURVEY, BOOK 262 OF MAPS  
PAGE 13, SANTA CLARA COUNTY RECORDS
- R-2 GRANT DEED, BOOK 1365 OFFICIAL RECORDS  
PAGE 421, SANTA CLARA COUNTY RECORDS
- R-3 TRACT 7018, BOOK 483 OF MAPS. PAGE 22 & 24  
SANTA CLARA COUNTY RECORDS.
- R-4 RECORD OF SURVEY, BOOK 17 OF MAPS  
PAGE 30, SANTA CLARA COUNTY RECORDS
- R-5 TRACT 4981, BOOK 297 OF MAPS, PAGE 25  
SANTA CLARA COUNTY RECORDS
- R-6 TRACT 8039, BOOK 588 OF MAPS. PAGE 33  
SANTA CLARA COUNTY RECORDS.
- R-7 BOOK 9057 OFFICIAL RECORDS. PAGE 620  
SANTA CLARA COUNTY RECORDS.
- R-8 BOOK 1736 OFFICIAL RECORDS. PAGE 1869  
SANTA CLARA COUNTY RECORDS.
- R-9 BOOK 1606 OFFICIAL RECORDS. PAGE 490  
SANTA CLARA COUNTY RECORDS.
- R-10 SANTA CLAROT OFFICIAL RECORDS. PAGE 485  
SANTA CLARA COUNTY RECORDS.

ALL DISTANCES AND DIMENSIONS ARE SHOWN IN FEET & DECIMALS THEREOF

● FOUND IRON PIPE AS NOTED  
DISTINCTIVE BORDER LINE  
SET 3/4" IRON PIPE TAGGED RCE 20597

----- CITY LIMIT LINE.

(S74°17'00"W 48.11', R-1, R-4) RECORD DATA AS SHOWN IN THE  
PERTINENT RECORD DOCUMENT



LINE	MEASURED DATA		RECORD DATA PER R-1		RECORD DATA PER R-5	
	DIRECTION	DISTANCE	DIRECTION	DISTANCE	DIRECTION	DISTANCE
L1	N32.31.33"E	77.22'	S33.09.00"W	76.09'	N32.40.02"E	76.32'
L2	N68.31.31"E	68.16'	S69.40.00"W	67.30' (1)	N69.04.32"E	67.49'
L3	N18.57.25"E	7.14'	S19.23.00"W	7.04'	(2)	(2)
L4	N55.59.45"E	47.35'	S56.58.00"W	46.69'	N56.24.41"E	46.83'
L5	N17.20.01"W	53.37'	S17.20.00"W	52.92'	N25.39.57"W	48.82'
L6	N20.49.49"E	30.19'	S21.77.00"W	29.16'	N20.50.06"E	29.85'
L7	N48.38.09"E	59.75'	S49.30.00"W	58.88'	N48.58.06"E	59.06'
L8	N66.34.02"E	0.27'	S67.28.00"W	0.26'	(3)	(3)
L9	N67.58.43"E	62.71'	S67.28.00"W	62.34'	(3)	(3)
L10	N25.26.24"E	60.56'	S24.38.00"W	60.13'	N24.10.35"E	60.31'
L11	N61.53.48"E	34.32'	S62.57.00"W	33.86'	N62.22.35"E	33.96'
L12	N18.57.25"E	36.05'	S19.23.00"W	37.52'	(2)	(2)
L13	N33.52.45"E	4.71'	S33.08.00"W	4.68'	(2)	(2)
L14	N07.39.47"E	59.96'	S06.44.00"W	59.57'	N06.19.27"E	59.72'
L15	N37.18.01"E	61.79'	S33.08.00"W	63.19'	(4)	(4)
L16	N74.04.23"E	40.18'	S73.47.00"W	41.40'	N7.31.05.0"E	41.51'
L17	S81.18.34"E	107.78'	N82.18.00"W	110.74'	S82.57.19"E	110.94'
L18	N61.30.24"E	19.80'	N61.35.00"E	20.39'	N61.00.53"E	

GRD NO: <del>68-50-67-51-69</del> & 69-51-70	FILE NO: 5605-51-70-931A
M613024 E	19.80
	NOV 20 00 L

(1) L2 = (116.30, R-1)-(49.00, R-4)=(67.30)  
(2) L3+L12 = N18°56'26"E 44.69' PER R-5  
(3) L8+L9 = N66°52.54"E 62.77' PER R-5  
(4) L13+L15 = N32°39.02"E 68.07' PER R-5

BOOK 657 OF MAPS PAGE 20-22

**JOB NO. 401-72**

**SHEET THREE OF THREE**