

© 2021 10/22 - rb american group - heber springs, ar drawings, ce-501.dwg

Seedbed Preparation

Apply lime to raise the pH to the level needed for species being seeded. Apply 23 pounds of 12-12-12 analysis fertilizer (or equivalent) per 1000 sq. ft. (approximately 1000 pounds per acre) or fertilize according to test. Application of 150 lbs. of ammonium nitrate on areas low in organic matter and fertility will greatly enhance vegetative growth.

Work the fertilizer and lime into the soil to a depth of 2-3 inches with a harrow, disk or rake operated across the slope as much as possible.

Seeding

Select a seed mixture based on projected use of the area (Figure 5-2), while considering best seeding dates. See Figure 5-3 this sheet. If tolerances are a problem, such as soil tolerance of seedings adjacent to streets and highways, see Figure 5-4 this sheet before final selection.

Figure 5-2: Permanent Seed Mixtures

Species	Seeding Rate lbs/acre	Suitable pH lbs/1000 sq. ft.	Site Suitability*	Droughty	Well Drained	Wet
Level and Sloping, Open Areas						
Tall Fescue	35 0.8	5.5 - 8.3	2	1		2
Tall Fescue	25 0.6	5.5 - 8.3				
Red Clover**	5 0.12					
Kentucky Bluegrass	15 0.4	5.5 - 7.5	2	1		
Creeping Red Fescue	15 0.4					
Steep Banks and Cuts						
Tall Fescue	15 0.4	5.8 - 7.5	2	1		2
Kentucky Bluegrass	25 0.6					
Tall Fescue	35 0.8	5.5 - 8.3	2	1		
Emerald Crownvetch**	10 0.25					
Lawns and High Maintenance Areas						
Kentucky Bluegrass	40 0.9	5.8 - 7.5	2	1		
Creeping Red Fescue	40 0.9					
Perennial Ryegrass	170 4.0	5.0 - 7.5		1		
(Turf Type)						
Tall Fescue	170 4.0	5.5 - 8.3	2	1		2

* 1 - Preferred 2 - Will Tolerate
** Inoculate with specific Inoculant.

Temporary Seeding Dates

	Jan	Feb	Mar	Apr	May	June	July	Aug	Sept	Oct	Nov	Dec
Wheat or Rye												
Oats												
Annual Ryegrass												

Permanent Seeding Dates

Native Seed												
Non-Irrigated*												
Irrigated												
Dormant Seeding**												

Irrigation needed during this period. To control erosion at times other than in the shaded areas, use mulch.
* Late summer seeding dates may be extended 5 days if mulch is applied.
** Note: If temporary stabilization must occur during the winter show mulch applied at a rate of 2 tones per acre and crimped in will be an acceptable cover.

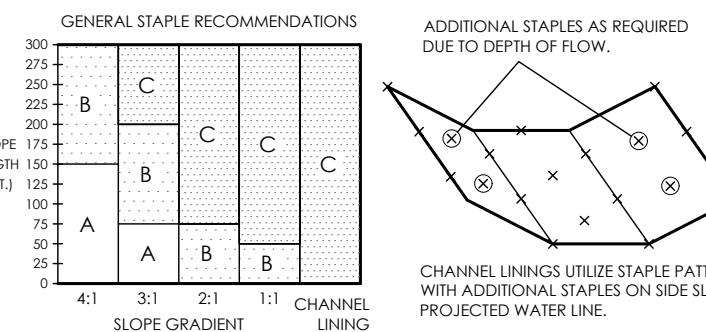
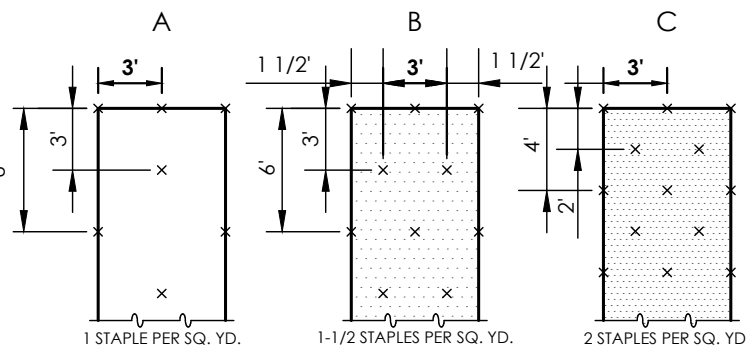
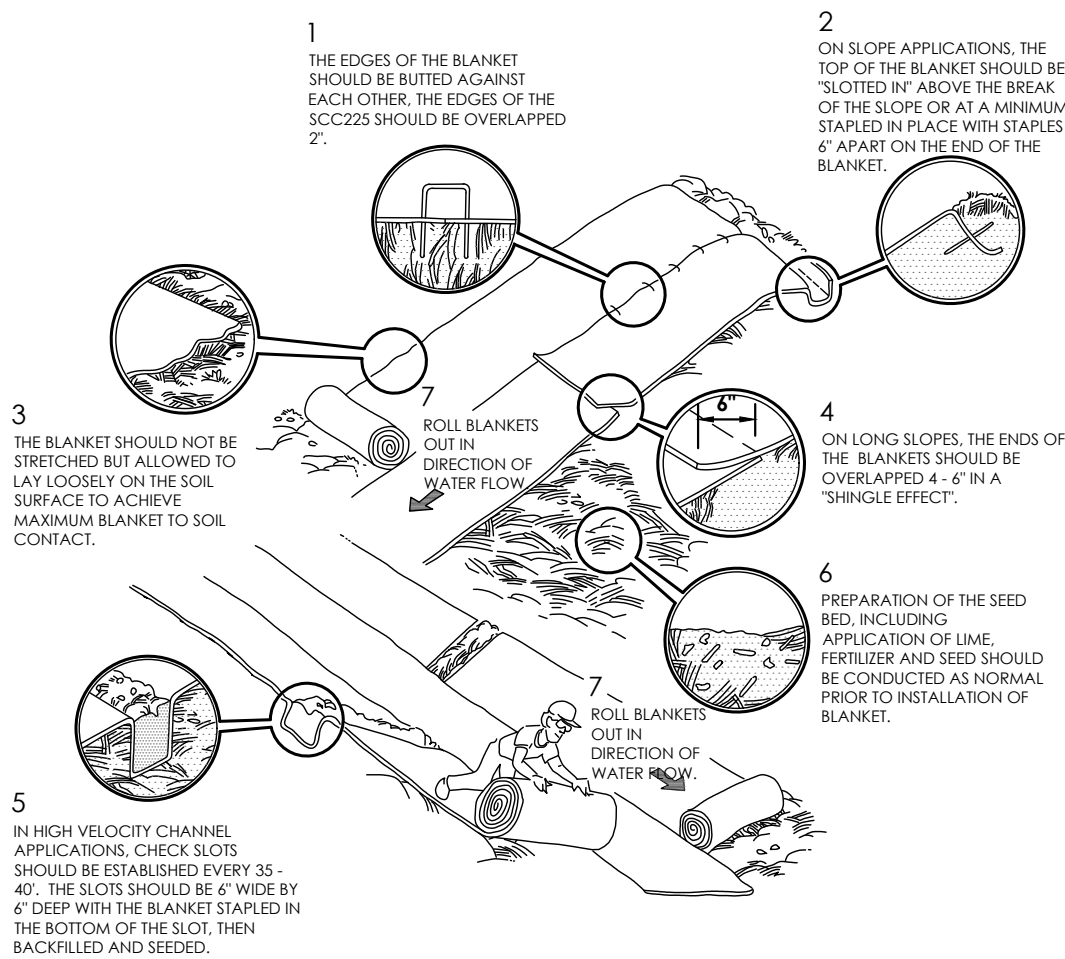
Temporary Seed Application Rates

Kind of Seed	1000 Sq. Ft.	Acres	Remarks
Wheat or Rye	3.5 lbs.	150 lbs.	Cover seed 1" to 1 1/2" deep
Spring Oats	2.3 lbs.	100 lbs.	Cover seed 1" deep
Annual ryegrass	1.0 lb.	40 lbs.	Cover seed 1/4" deep*

* Not necessary where mulch is applied.

SEEDING SCHEDULE

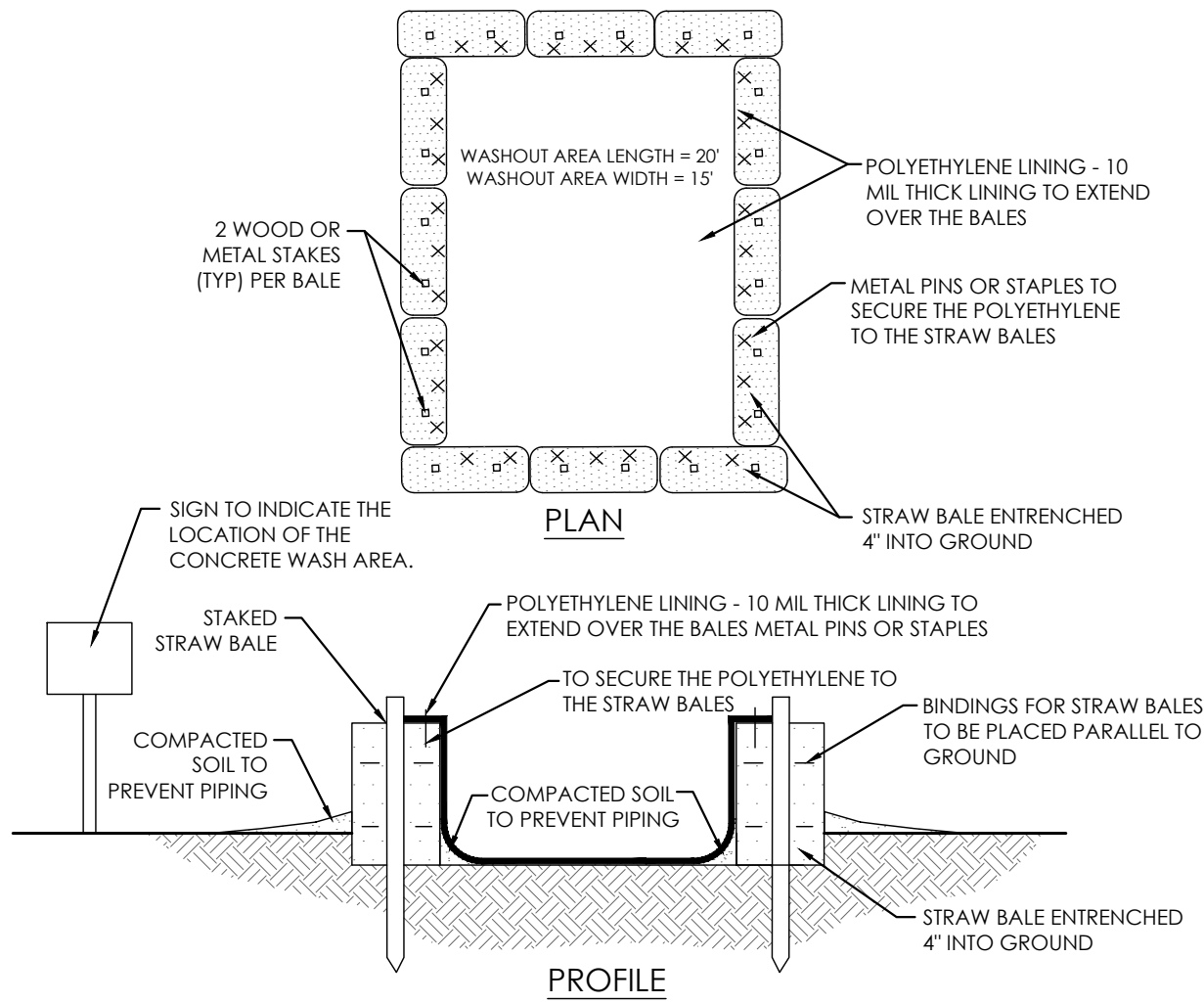
NOT TO SCALE



STAPLE PATTERNS APPLY TO ALL NORTH AMERICAN EROSION CONTROL BLANKETS. STAPLE PATTERNS MAY VARY DEPENDING UPON SOIL TYPE AND AVERAGE ANNUAL RAINFALL.
AT SLOPE LENGTHS GREATER THAN 300 FEET OR WHERE DRAINAGE OVER LARGE AREAS IS DIRECTED OVER THE BLANKETS, STAPLE PATTERN "C" SHOULD BE UTILIZED.

EROSION CONTROL MATTING

NOT TO SCALE

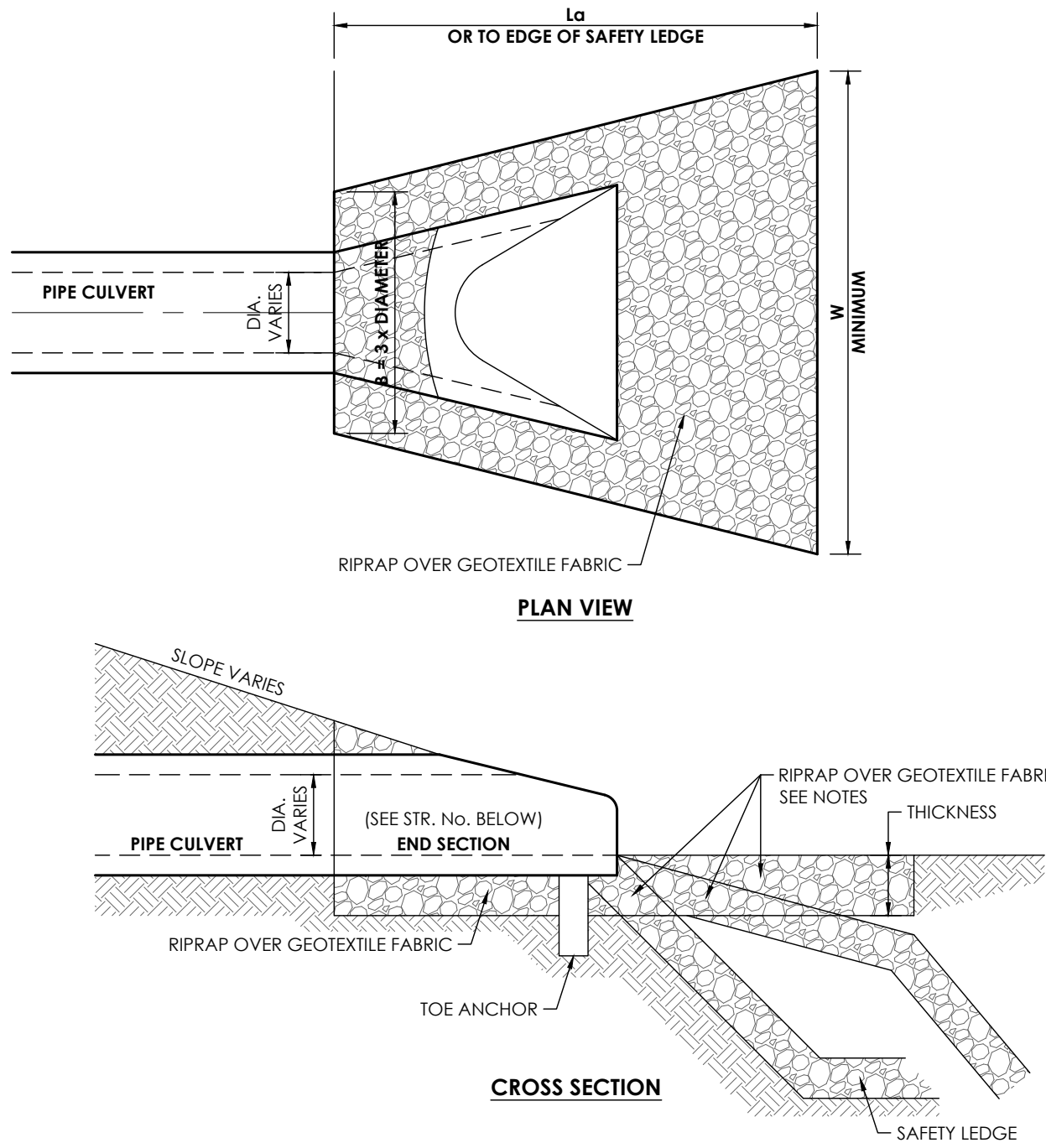


NOTES:

- CONCRETE WASHOUT AREA SHALL BE INSTALLED PRIOR TO ANY CONCRETE PLACEMENT ON SITE.
- SIGNS SHALL BE PLACED AT THE CONSTRUCTION ENTRANCE, AT THE WASHOUT AREA, AND ELSEWHERE AS NECESSARY TO CLEARLY INDICATE THE LOCATION OF THE CONCRETE WASHOUT AREA TO OPERATORS OF CONCRETE TRUCKS AND PUMP RIGS.
- THE CONCRETE WASHOUT AREA SHALL BE REPAIRED AND ENLARGED OR CLEANED OUT AS NECESSARY TO MAINTAIN CAPACITY FOR WASTED CONCRETE.
- AT THE END OF CONSTRUCTION, ALL CONCRETE SHALL BE REMOVED FROM THE SITE AND DISPOSED OF AT AN APPROVED WASTE SITE.
- WHEN THE CONCRETE WASHOUT AREA IS REMOVED, THE DISTURBED AREA SHALL BE SEEDED AND MULCHED OR OTHERWISE STABILIZED IN A MANNER APPROVED BY THE INSPECTOR.
- CONTRACTOR SHALL PROVIDE ADDITIONAL WASHOUT STRUCTURES OR LARGER STRUCTURES IF REQUIRED.

CONCRETE WASHOUT

NOT TO SCALE



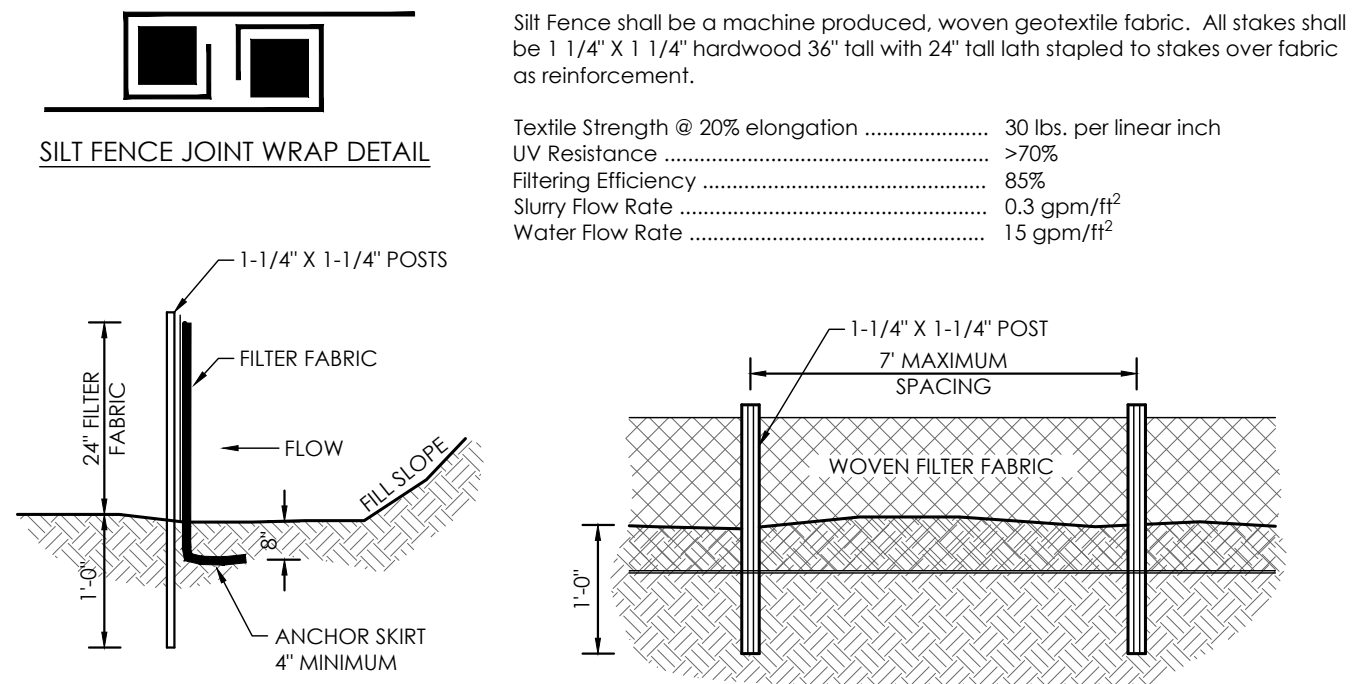
Structure No.	B	La	W	Thickness	d ₅₀	Size of Stone	Percent of Total Weight Larger than Given Size
100	3'	6'	6'	18"	6"	3 x d ₅₀	0%
-	0'	0'	0'	0"	0"	2 x d ₅₀	20%
-	0'	0'	0'	0"	0"	1 x d ₅₀	50%
-	0'	0'	0'	0"	0"	0.1 x d ₅₀	90%

Depth of riprap shall not be less than 3 x d₅₀.

- GEOTEXTILE TO BE POLYFELT TS700 OR APPROVED EQUAL

RIPRAP OUTLET PROTECTION

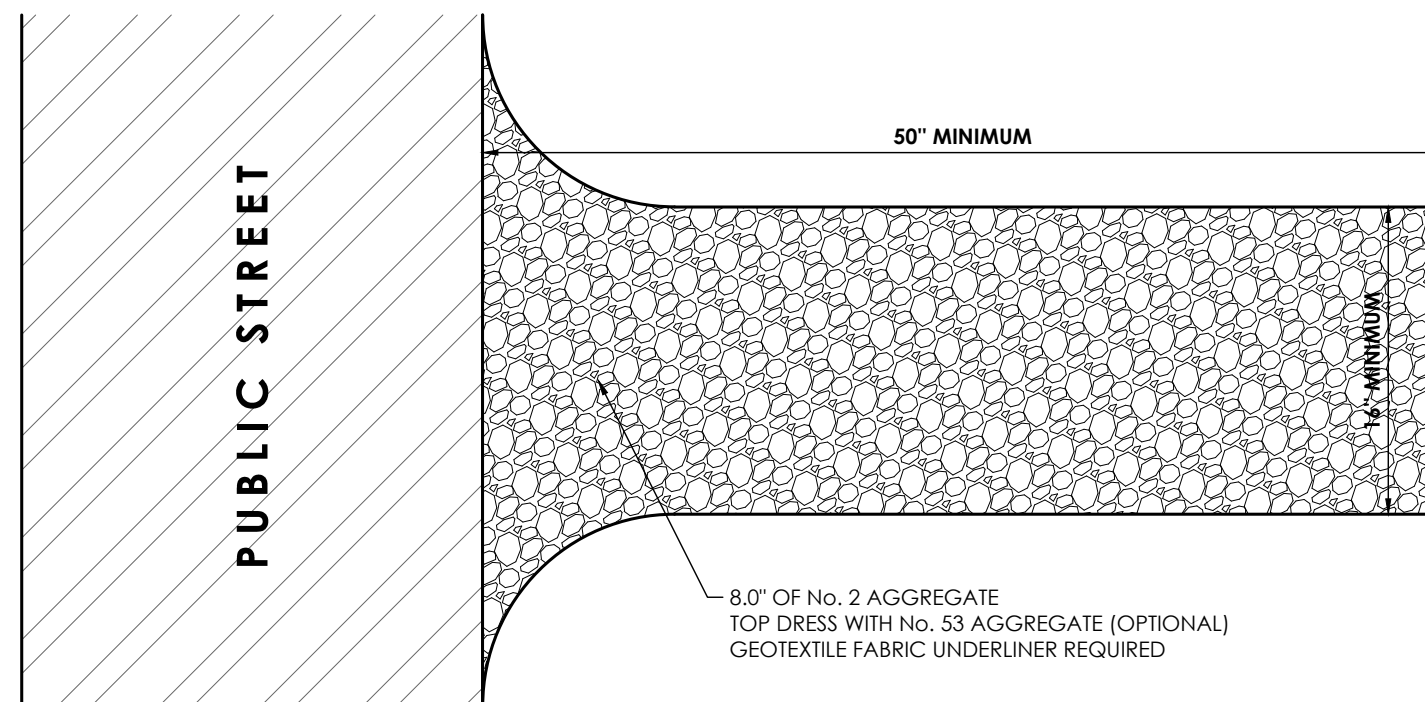
NOT TO SCALE



- NOTES:
- FILTER FABRIC FENCE SHALL BE A MINIMUM OF 36\"/>
 - TURN SILT FENCE UP SLOPE AT ENDS.

TEMPORARY SILT FENCE

NOT TO SCALE



GRAVEL CONSTRUCTION ENTRANCE

NOT TO SCALE

SOILS LEGEND + DESCRIPTION

Map Unit: 29 - Steprock-Linker complex



REVISION BLOCK



DATE 10/22/2021	CHECKED BY TLP
--------------------	-------------------

HAMILTON
DESIGNS
A LIMITED LIABILITY COMPANY

11 Municipal Drive, Suite 300
Fishers, Indiana 46038
P. (317) 570-9800
www.hamilton-designs.com

CONSTRUCTION PLANS FOR:

ARBY'S | HEBER SPRINGS

1432 Heber Springs Road
Heber Springs, Arkansas 72543

RB AMERICAN GROUP, LLC

6200 Oak Tree Blvd., Suite 250
Independence, Ohio 44131

PROJECT NO.
2021-0122

DATE
10/22/2021

SCALE

SHEET NAME
STORMWATER POLL.
PREV. DETAILS

SHEET NO.

CE-501