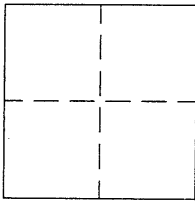


CORNER RECORD

99-207 10 Cr 007

APN No. _____ (Optional) Document Number CR 1162
 City of _____ County of ALAMEDA, California
 Brief Legal Description STANDARD COUNTY MONUMENTS ON WEST CAVENDISH DRIVE.



CORNER TYPE

Government Corner ☐ Control ☐
 Meander ☐ Property ☐
 Rancho ☐ Other ☒
 Date of Survey APRIL 20, 1998

COORDINATES (Optional)

N. _____
 E. _____
 Zone _____ Datum _____
 Elev. _____

Corner - Left as found ☒ Found and tagged ☐ Established ☐ Reestablished ☐ Rebuilt ☐

In compliance with Section 8771 of the Professional Land Surveyors' Act, this corner record is being filed to
 ESTABLISH X / REESTABLISH _____ the position of an existing monument PRIOR X / SUBSEQUENT _____
 to street or highway reconstruction. (Use this portion only when applicable.)

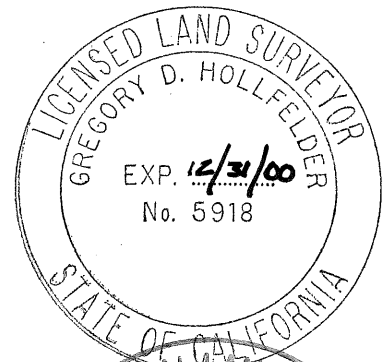
Identification and type of corner found: Evidence used to identify or procedure used to establish or reestablish the corner:
THE MONUMENTS DESCRIBED BELOW WERE REFERENCED BY STRAIGHT LINES
THROUGH MONUMENT PINS AND ANGLES AND DISTANCES SHOWN ON DIAGRAM.

A description of the physical condition of the monument as found and as set or reset: FOUND ALAMEDA COUNTY
MONUMENTS SHOWN ON TRACT MAP 3814, EDEN TOWNSHIP, MONUMENTS FOUND
IN GOOD CONDITION ALL AT 0.30 BELOW SURFACE.

SURVEYOR'S STATEMENT

This Corner Record was prepared by me or under my direction in conformance with
 the Land Surveyors' Act on DECEMBER 28 19 98.

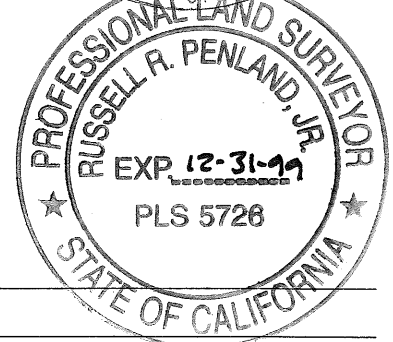
Signed Gregory D. Hollfelder L.S. or R.C.E. Number 5918



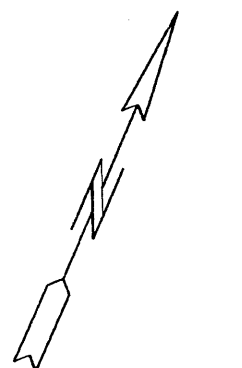
COUNTY SURVEYOR'S STATEMENT

This Corner Record was received 12-29-98 and examined
 and filed 1-12-99.

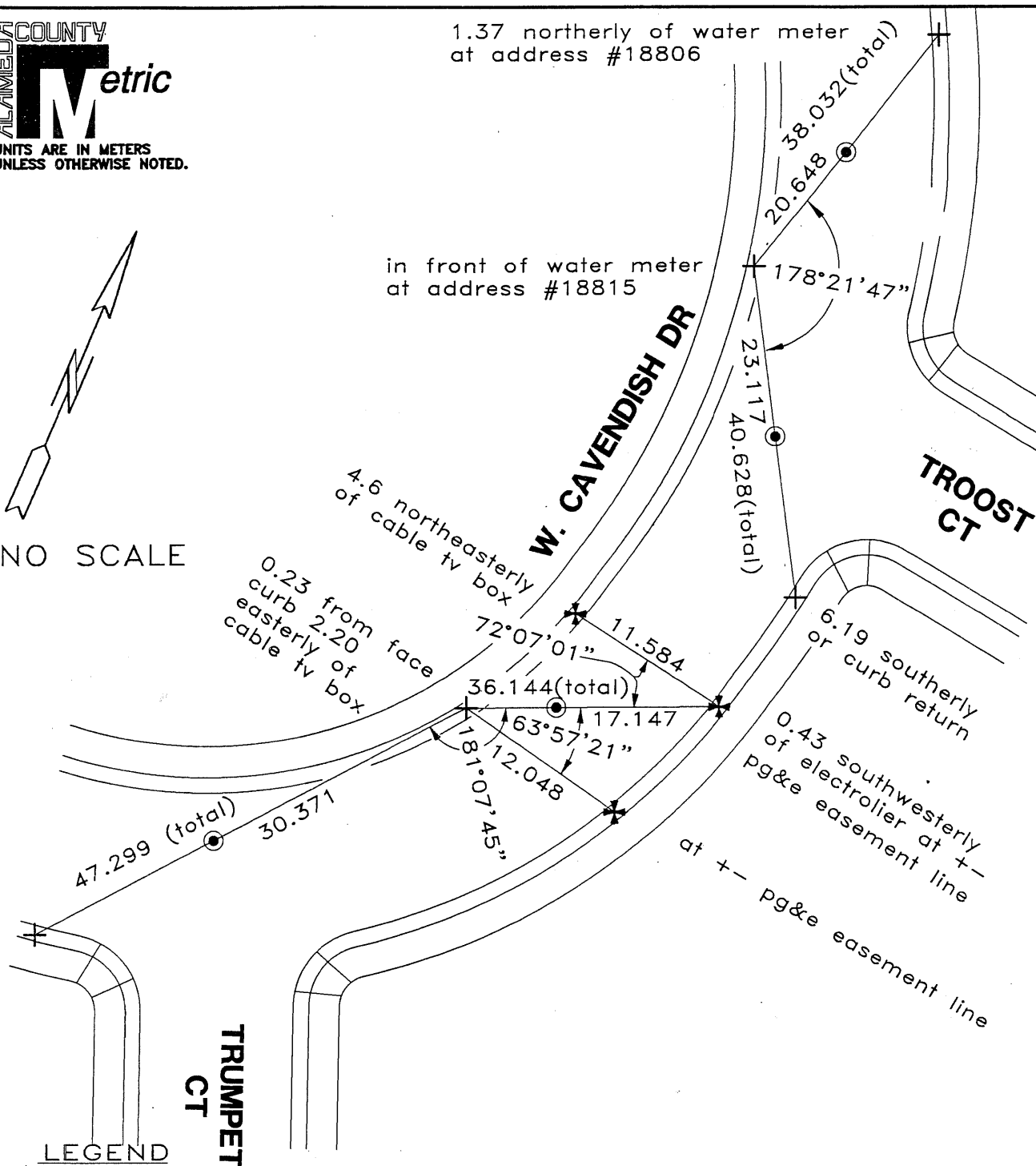
Signed Russell R. Penland, Jr. Title Deputy County Surveyor



County Surveyor's Comment _____



NO SCALE



- FOUND STANDARD ALAMEDA COUNTY MONUMENTS, PIN IN CONCRETE POST, ALL AT 0.30 BELOW SURFACE.
- + SET CHISELED "+" AT +- CENTER LINE TOP OF CURB.
- * FOUND CHISELED "+" AT +- CENTER LINE TOP OF CURB.

REFERENCE(S)
 PER TRACT MAP 3814, BOOK 100, PAGE 79.