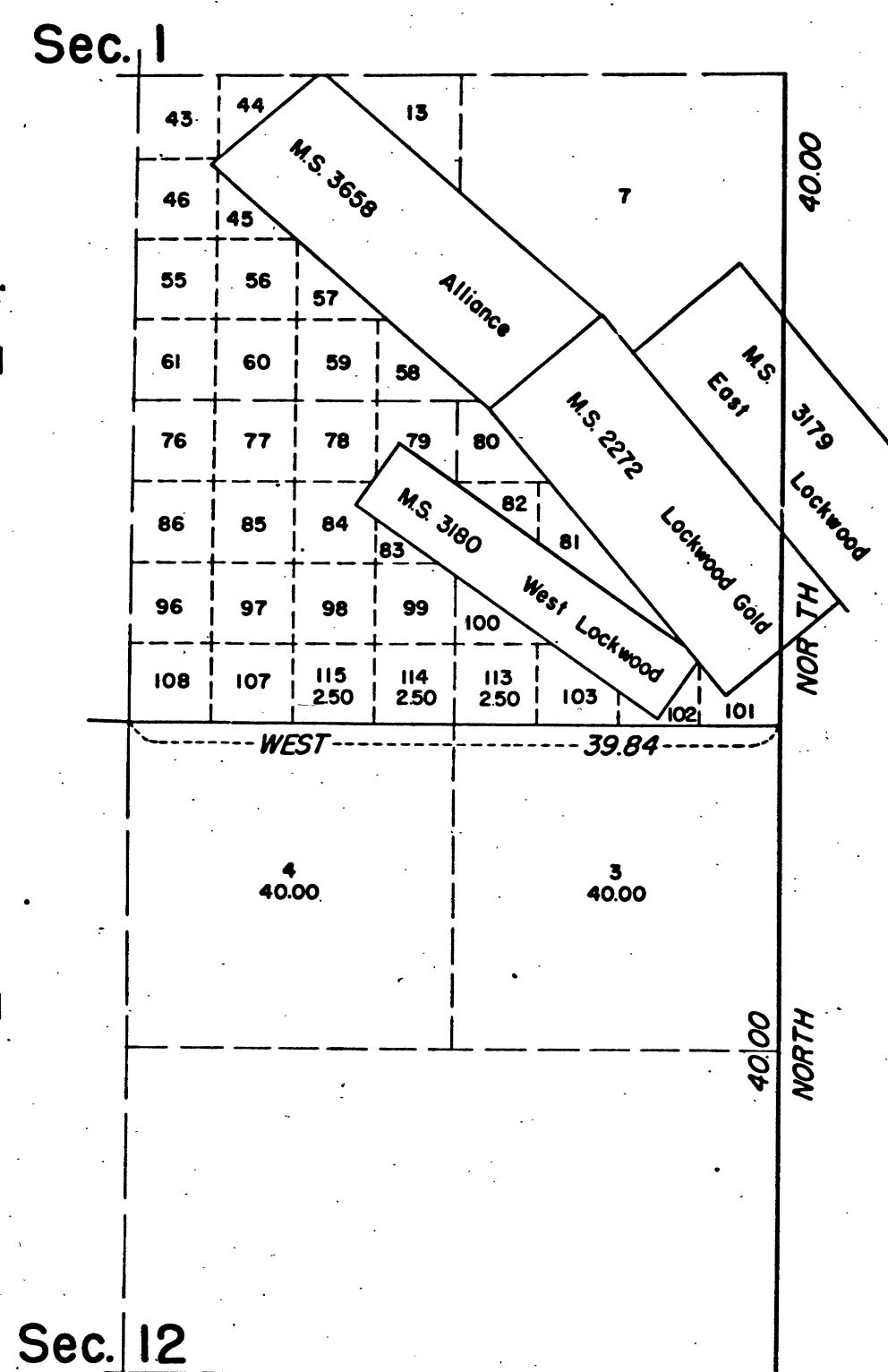


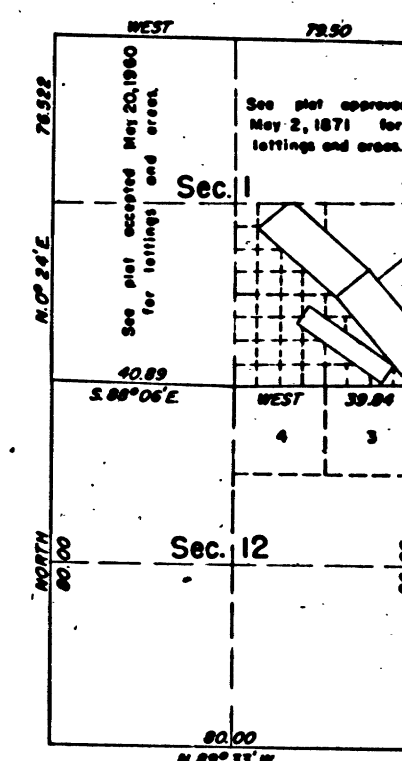
TOWNSHIP 6 NORTH, RANGE 13 EAST, OF THE MOUNT DIABLO MERIDIAN, CALIFORNIA.
SUPPLEMENTAL PLAT OF SECTIONS 1 & 12

ENLARGED DIAGRAM
OF THE SE $\frac{1}{4}$

ENLARGED DIAGRAM
OF THE NE $\frac{1}{4}$



LOCATION DIAGRAM



This supplemental plat showing lottings restored to the status of public land, caused by the elimination of the unpatented Golden Rule Quartz Mining Claim, Mineral Survey No. 3610, in Section 1 and 12, Township 6 North, Range 13 East, Mount Diablo Meridian, California, is based upon the plats approved May 2, 1871, December 16, 1899, and plat accepted May 20, 1960.

UNITED STATES DEPARTMENT OF THE INTERIOR
BUREAU OF LAND MANAGEMENT
Washington, D.C. February 28, 1963

This plat, showing amended lottings, is based upon the official records, and having been correctly prepared in accordance with the regulations, is hereby accepted.

For the Director

E. E. Lemington
Chief, Division of Engineering

T. 6 N. R. 13 E. M.D.M.

BLM 292

CHAINS

CHAINS
10 20 40 60 80 100 120

10 5 0 10 20 30 40
Chains

RNO

RTG