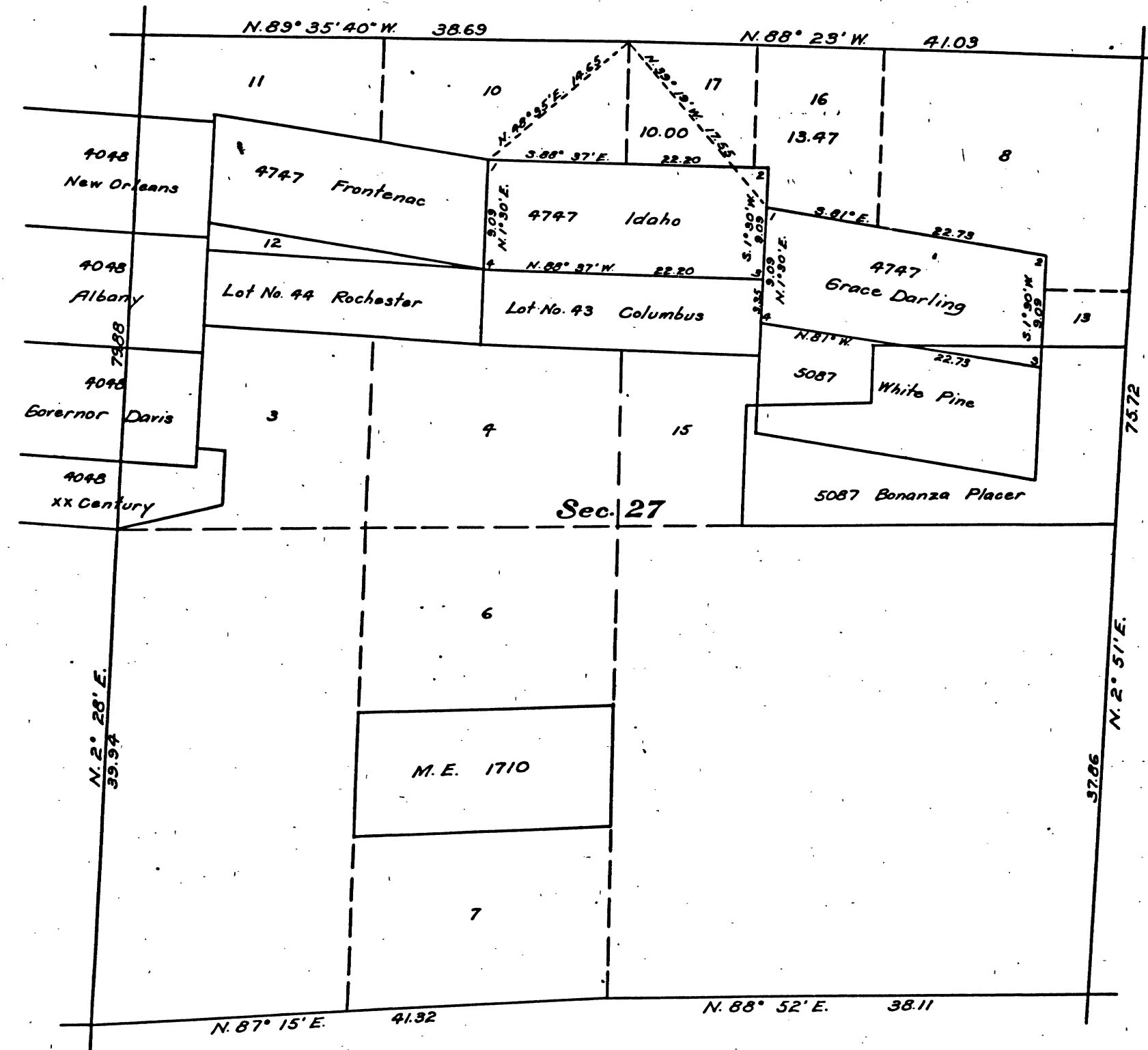


Amended Plat of Section 27,
Township N^o 4 North, Range N^o 13 East, Mount Diablo Meridian, California



Authorization; letter Sacramento 014949 "N" CAH dated July 9, 1924.

This amended plat, showing the subdivision of lot 9, section 27, T. 4 N., R. 13 E., M.D.M., California, plats approved August 16, 1871 and January 4, 1916, is made for the purpose of obtaining the area and legal description of the east and west halves thereof, to accommodate homestead application Sacramento 014949 of Anton Pozar, and is hereby approved.

U.S. Surveyor General's Office,
San Francisco, California,
July 30, 1924.

John P. Over
U.S. Surveyor General for California.

Scale 10 chains to an inch.

Mean Magnetic Declination

Surveys Designated	By Whom Surveyed	Group		Amount of Surveys			When Surveyed	
		No.	Date	Mls.	chs.	Ucs.	Begun	Completed

The above map of Township No. _____ Range No. _____ of the
Meridian _____ is strictly conformable to the field notes of the survey thereof on file
in this office, which have been examined and approved.
U. S. Surveyor General's Office.

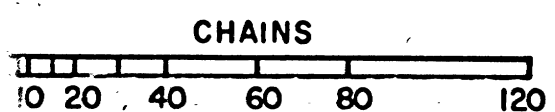
Surveyor General.

41 334

REGISTER AND RECEIVER RECEIPT
DATED SEP 19 1924

T. 4 N. R. 13 E. MD.

CHAINS



BLM 174