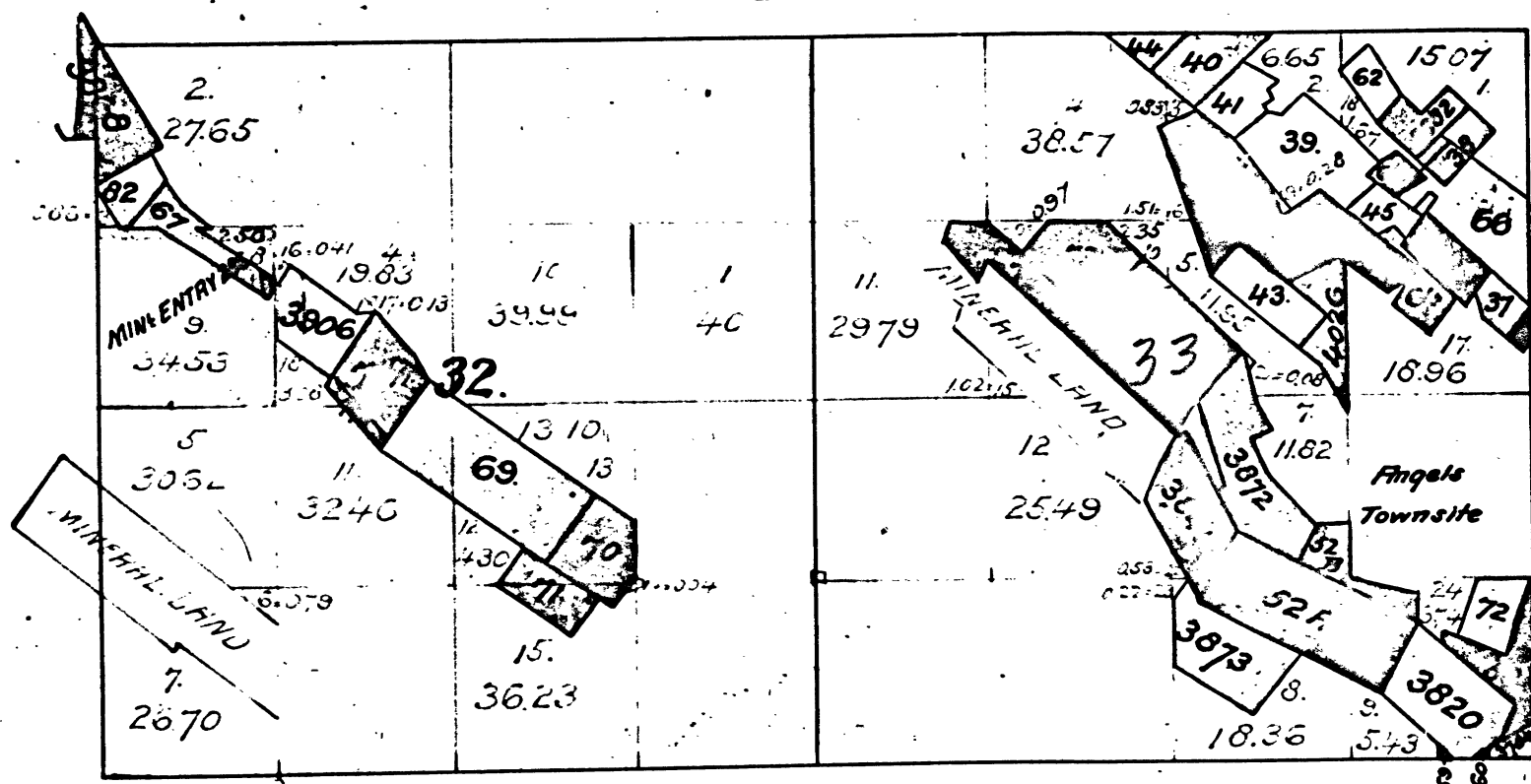


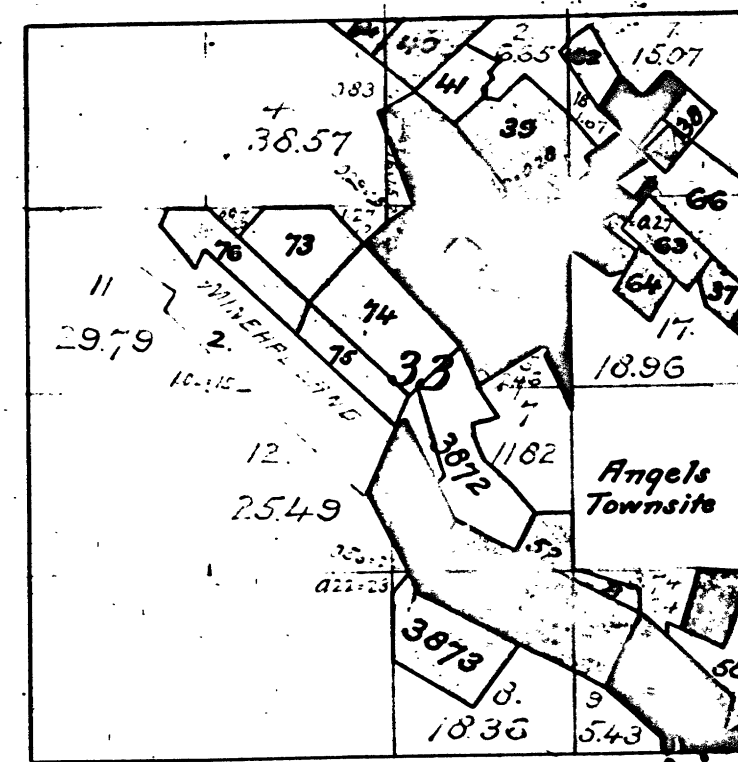
# Township No 3 North, Range No 13 East, Mount Diablo Meridian.



- 80-175  
370-197  
743-237  
479-244  
1241-300  
356-324  
1345-570  
1997  
2036
37. Stickle Q.M.  
38. Dead Horse Q.M. and Mill Site.  
39. Angels  
40. Bovee  
41. Dr. Hill  
43. Democrat  
44. Fritz  
45. Lightner  
52. H.B. Altaville  
53. Crystal Q.M.  
Mineral Entry 286 SW 1/4 of NW 1/4 of Sec. 32. Stockton Letter Aug 21, 1883.  
2. Segr. of agricult. from min. land, Lots 10, 11 & 12 Sec. 33 A.B. Beauvais Dep. Sur. March 12, 1884.  
3. 5, 7, 10 & 13 Sec. 33 April 12, 1884.  
9. 4 Sec. 32 Aug 20, 1885.
- 2602  
2500  
3040  
3065  
3066  
3067  
3068  
3069  
3070  
3071  
3072  
3073  
3074  
3075  
3076  
3077  
3078  
3079  
3080  
3081  
3082  
3083  
3084  
3085  
3086  
3087  
3088  
3089  
3090  
3091  
3092  
3093  
3094  
3095  
3096  
3097  
3098  
3099  
3100
57. Oneida Q.M.  
58. Peachy P.M. Tract No. 1.  
59. 2  
60. 2  
61. Segr. of agricult. from min. land Lots 5, 6 & 7 Sec. 32. A.H. Couiter, Dep. Sur. April 8, 1890.  
62. Duffy Q.M.  
63. Utica  
64. Jackson  
65. Raspberry  
66. Geo. Washington Q.M.  
67. Gold Hill  
68. Billings  
69. Blair Con. Q.M. and M.S. Blair and Co's Loc.  
70. Thos Blair Jr.  
71. Mill Site  
72. Anna Q.M.  
73. Brown, Smith, Ryland Con. Q.M. Martinsen Loc.  
74. Johnson  
75. Smyth  
76. Hale  
77. H.B. Evening Star Q.M. and Mill Site.  
82. Clary Q.M.  
Fairfax  
Specimen Mill Q.M.  
Pilot Knob  
Carpenter Company's Q.M.  
Empire P.M. including a lode.  
North Star Q.M.  
Foster Q. Mining Claim.  
Wagon Rut Q.M.  
January Q.M.

The above diagram of Sections 32 and 33 Township No 3 North, Range No 13 East, Mount Diablo Meridian, California, is correctly constructed from official plats, on file in this Office.  
U.S. Surveyor General's Office  
San Francisco, California.  
February 24th 1903.

W.S. Graham  
U.S. Surveyor General  
for California.



- 80-175  
370-197  
743-237  
479-244  
1241-300  
356-324  
1345-570  
1997  
2036  
2602  
2500  
3040  
3065  
3066  
3067  
3068  
3069  
3070  
3071  
3072  
3073  
3074  
3075  
3076  
3077  
3078  
3079  
3080  
3081  
3082  
3083  
3084  
3085  
3086  
3087  
3088  
3089  
3090  
3091  
3092  
3093  
3094  
3095  
3096  
3097  
3098  
3099  
3100
37. Stickle Quartz Mine.  
38. Dead Horse Quartz Mine and Mill Site.  
39. Angels  
40. Bovee  
41. Dr. Hill  
43. Democrat Quartz Mine.  
44. Fritz  
45. Lightner Quartz Mine  
52A. Gold Cliff Quartz Mine.  
52B. Mill Site.  
53. Crystal Quartz Mine.  
57. Oneida.  
58. Peachy Placer Mine Tract No. 1.  
59. No. 2.  
60. No. 2.  
62. Duffy Quartz Mine.  
63. Utica  
64. Jackson  
65. Raspberry  
66. George Washington Quartz Mine.  
68. Billings Quartz Mine.  
72. Anna  
73. Brown, Smyth, Ryland Con. Quartz Mine  
74. Martinsen Loc.  
75. Johnson  
76. Smyth  
Hale  
Fairfax Quartz Mine.  
Specimen Mill Quartz Mine.  
Pilot Knob Quartz Mine.  
Empire P.M. including a lode.  
North Star Quartz Mine.  
Foster Q. Mining Claim.  
January Quartz Mine.  
North End Lode Claim.  
2. Segregation of Agricultural from mineral land Lots 10, 11 & 12 in Sec. 33  
See field notes of Dep. Sur. A.B. Beauvais dated March 12th 1884.

The above diagram of Section 33, Township No 3 North, Range No 13 East, Mount Diablo Meridian, California, is correctly constructed from official plats on file in this Office.  
U.S. Surveyor General's Office.  
San Francisco, California.  
December 17, 1903.

W.S. Graham  
U.S. Surveyor General for California.

DEPARTMENT OF THE INTERIOR,  
GENERAL LAND OFFICE,  
Washington, D. C. Feb. 5, 1905.  
I hereby certify that this is a true copy  
of the plats of official survey of the lands  
to which it relates, on file in this office.

W.S. Graham  
Recorder, General Land Office.