

# CORNER RECORD

Agency Index

BK 117 PG 61

Document Number

CR 12343

City of

Ashland

County of

Alameda

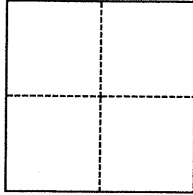
, California

Brief Legal Description

Mon e Kent Ave and Elgin Street

## CORNER TYPE

## COORDINATES (Optional)



- ☐ Government Corner ☒ Control  
☐ Meander ☐ Property  
☐ Rancho ☐ Other

N. \_\_\_\_\_ E. \_\_\_\_\_

Elevation \_\_\_\_\_

Units

☐ Metric☒ U.S. Survey Foot

Horizontal Datum \_\_\_\_\_

Zone \_\_\_\_\_

Epoch Date \_\_\_\_\_

Date of Survey

8 2 2018

Vertical Datum \_\_\_\_\_

☐ Complies with Public Resources Code §§8801-8819☐ Complies with Public Resources Code §§8890-8902

PLS Act Ref.:

☐ 8765(d)☒ 8771☐ 8773☐ Other:Corner/  
Monument:☒ Left as found☐ Established☐ Rebuilt☐ Pre-Construction☐ Found and tagged☐ Reestablished☐ Referenced☒ Post-Construction

Narrative of corner identified and monument as found, set, reset, replaced, or removed:

☐ See sheet #2 for description(s):

Pre CR 8623

Found in good condition

## SURVEYOR'S STATEMENT

This Corner Record was prepared by me or under my direction in conformance with

the Professional Land Surveyors' Act on

9 22 18

Signed

P.L.S. or R.C.E. No.

5254



## COUNTY SURVEYOR'S STATEMENT

This Corner Record was received

9 OCTOBER 2018

and examined and filed

18 JANUARY 2019.

Signed

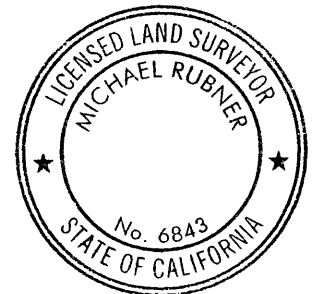
P.L.S. or R.C.E. No.

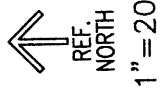
6843

Title

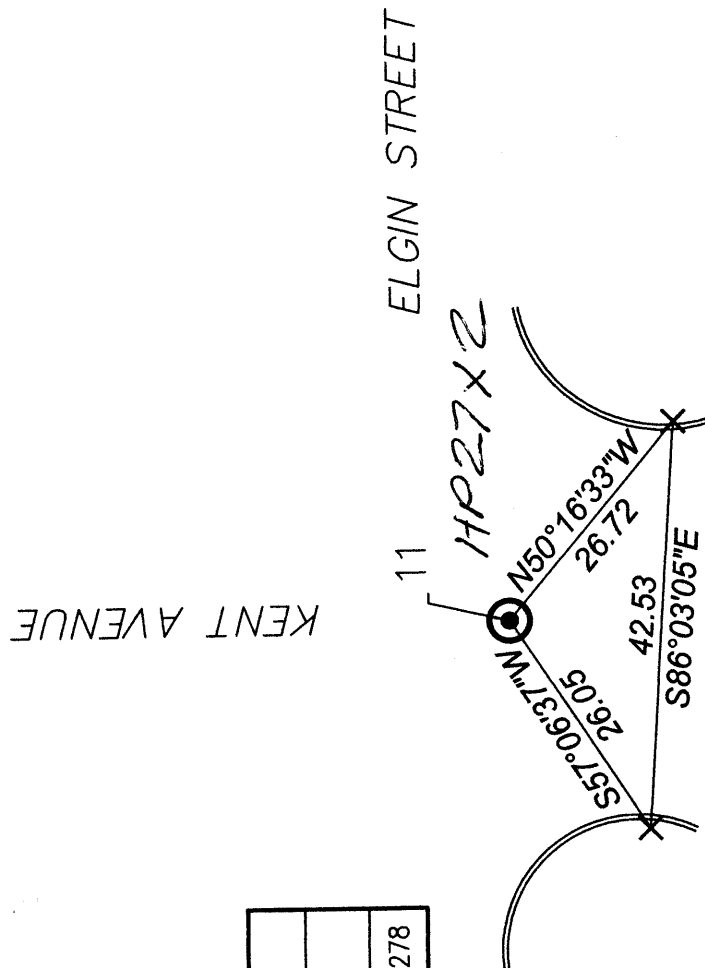
County Surveyor

County Surveyor's Comment





Control Point Table		
Point #	Northing	Easting
11	2078184.9754	6094625.2278



LEGEND

- MONUMENT
- PK NAIL & WASHER
- × SAW CUT-X